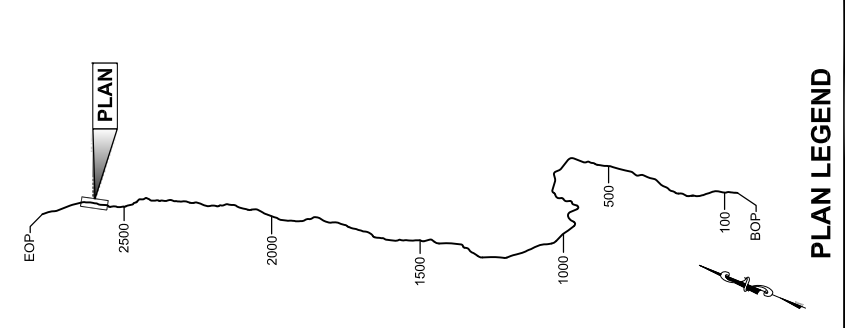


RECORD OF REVISIONS	
NO.	DESCRIPTION

ATTACHMENT NUMBER	

ATTACHMENT NUMBER	



CHECKED BY:  
**DRAFT**

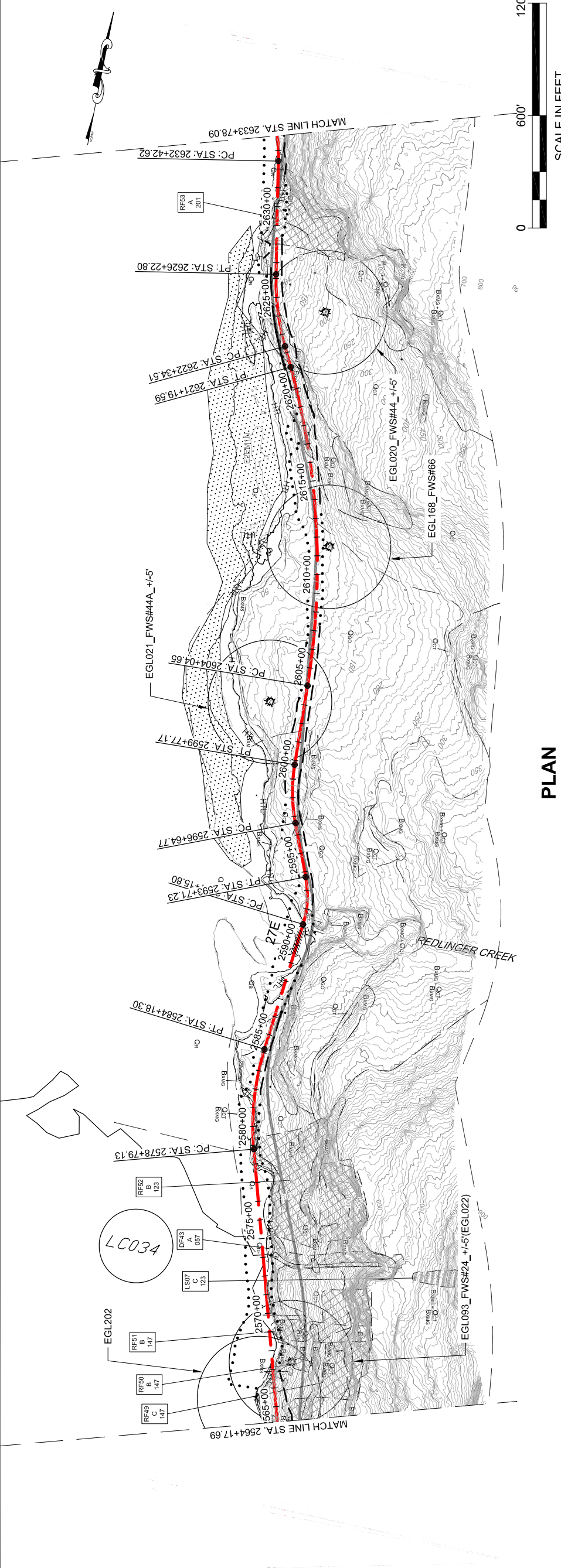
DESIGNED BY:  
DRAWN BY:  
STATE OF ALASKA  
DEPARTMENT OF TRANSPORTATION  
& PUBLIC FACILITIES  
SOUTHEAST REGION  
**JNU-EAST LYNN CANAL  
HIGHWAY ALTERNATIVE 2B  
PROJECT #71100**

**2013 EIS  
PLAN VIEW**

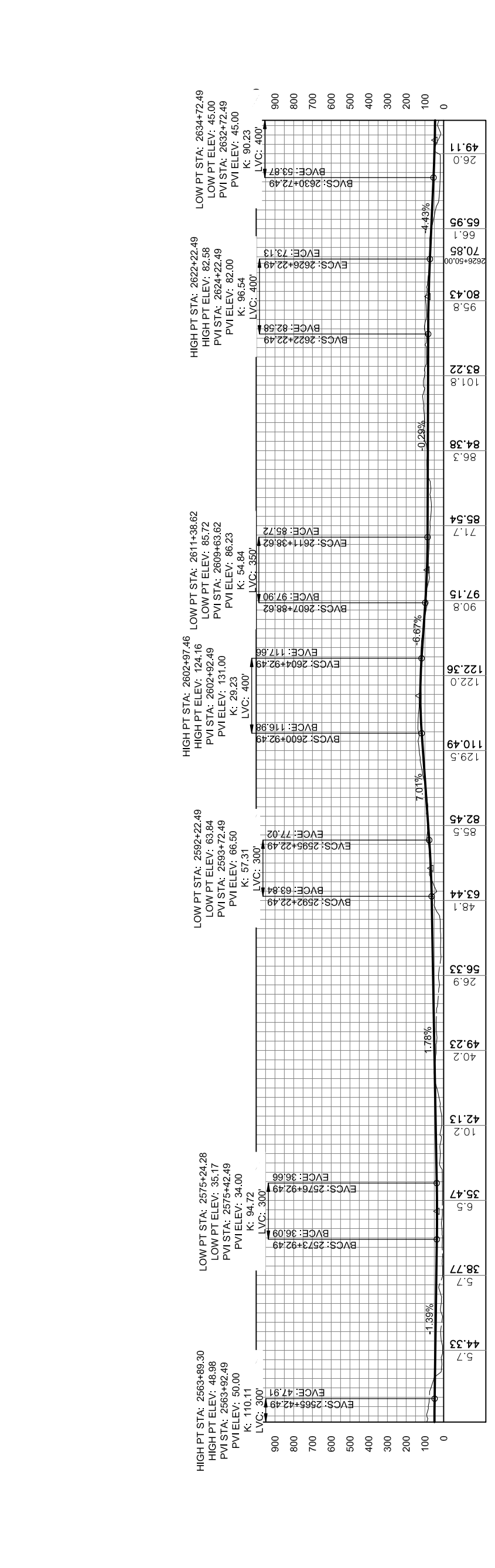
PROJECT DESIGNATION	<b>71100</b>
---------------------	--------------

STATE	<b>ALASKA</b>	YEAR	<b>2013</b>
-------	---------------	------	-------------

SHEET NUMBER	<b>EL36</b>	TOTAL SHEETS	<b>38</b>
--------------	-------------	--------------	-----------



**PLAN**



**PROFILE**

**DO NOT SCALE FROM THESE DRAWINGS USE DIMENSIONS**

*This page intentionally left blank.*

PATH: C:\UNITS\10\08\10-2012 EIS DWG\B71100\_2013 EIS  
 GEARY, NATE (DOT)  
 TAB: EL3\Friday, October 04, 2013 12:57:55 PM

RECORD OF REVISIONS	
NO.	DATE

APPENDUM NUMBER  
 ATTACHMENT NUMBER

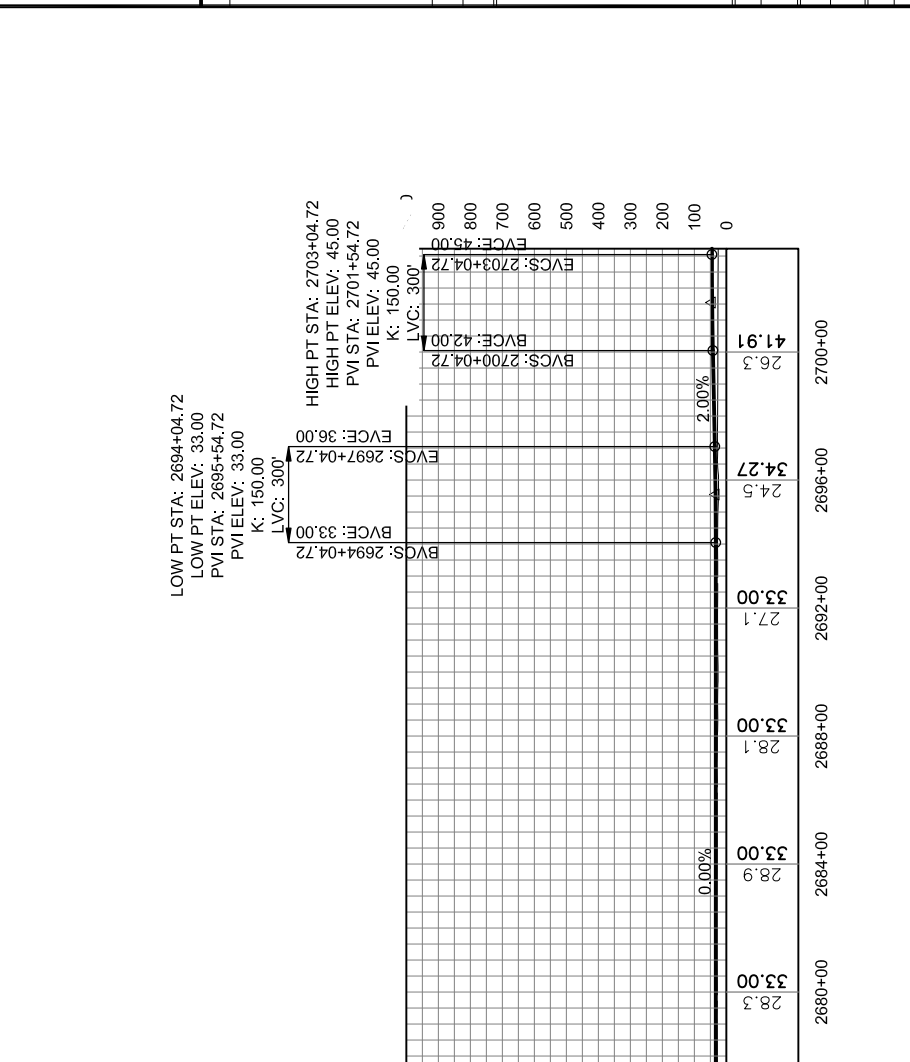
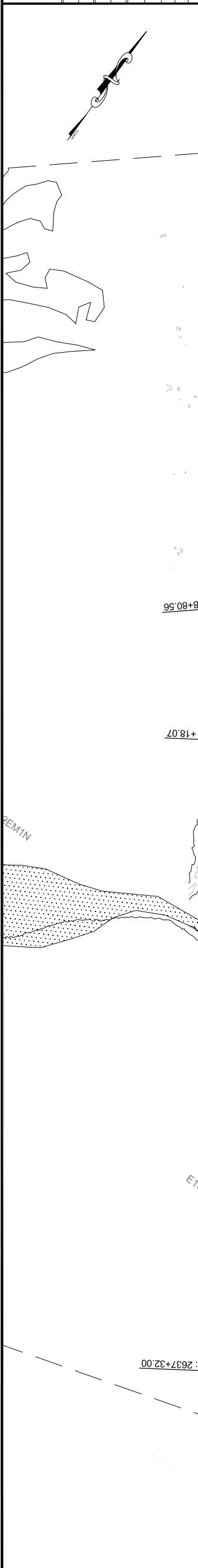
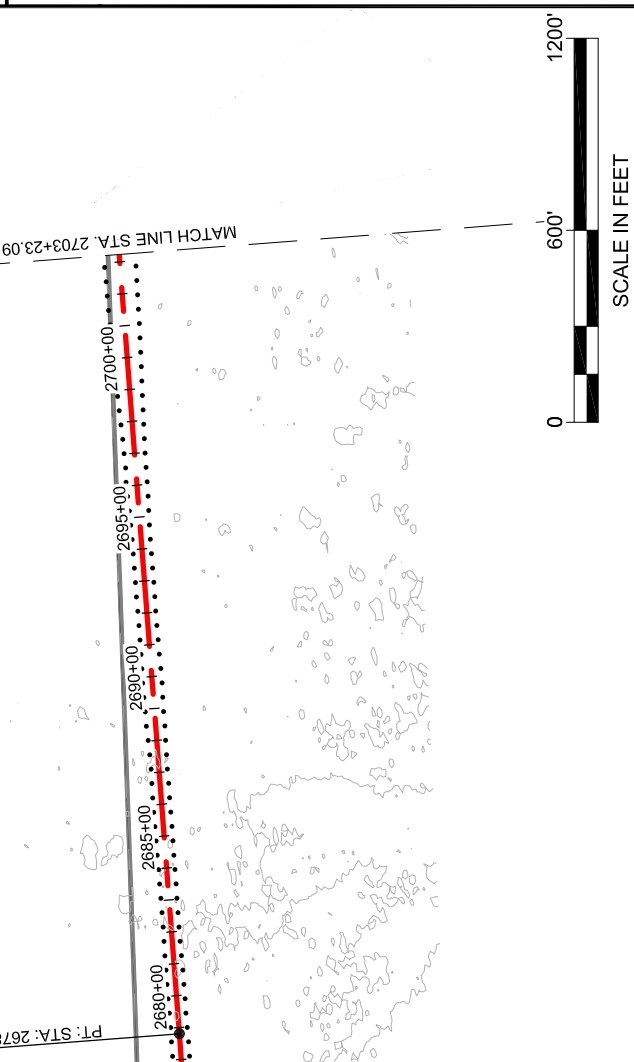
2013 EIS  
 PLAN VIEW

STATE OF ALASKA  
 DEPARTMENT OF TRANSPORTATION  
 & PUBLIC FACILITIES  
 SOUTHEAST REGION  
 JUNEAU-EAST LYNN CANAL  
 HIGHWAY ALTERNATIVE 2B  
 PROJECT #71100

CHECKED BY:

DESIGNED BY:  
 DRAWN BY:

PROJECT DESIGNATION	71100
STATE	ALASKA
YEAR	2013
SHEET NUMBER	EL37
TOTAL SHEETS	38

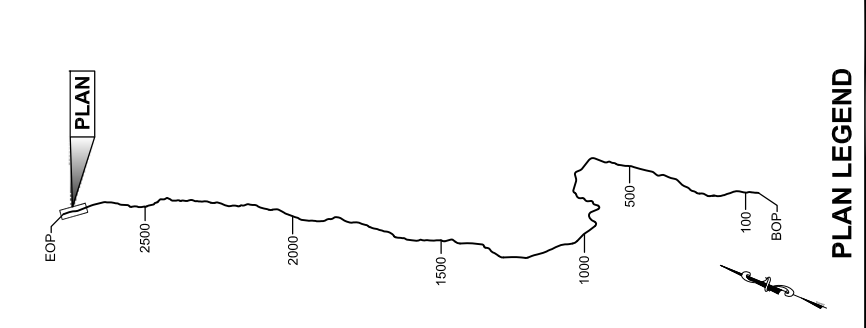


*This page intentionally left blank.*



PATH: C:\UNITS\10\08\10-2012 EIS DWGSET\100\_2013 EIS  
 GEARY, NATE (DOT)  
 TA8: EL38\Friday, October 04, 2013 12:56:26 PM

APPENDIX NUMBER	ATTACHMENT NUMBER	RECORD OF REVISIONS	DESCRIPTION
NO.	DATE		



**PLAN LEGEND**

CHECKED BY:

DESIGNED BY:

DRAWN BY:

STATE OF ALASKA  
 DEPARTMENT OF TRANSPORTATION  
 & PUBLIC FACILITIES  
 SOUTHEAST REGION

**JNU-EAST LYNN CANAL  
 HIGHWAY ALTERNATIVE 2B  
 PROJECT #71100**

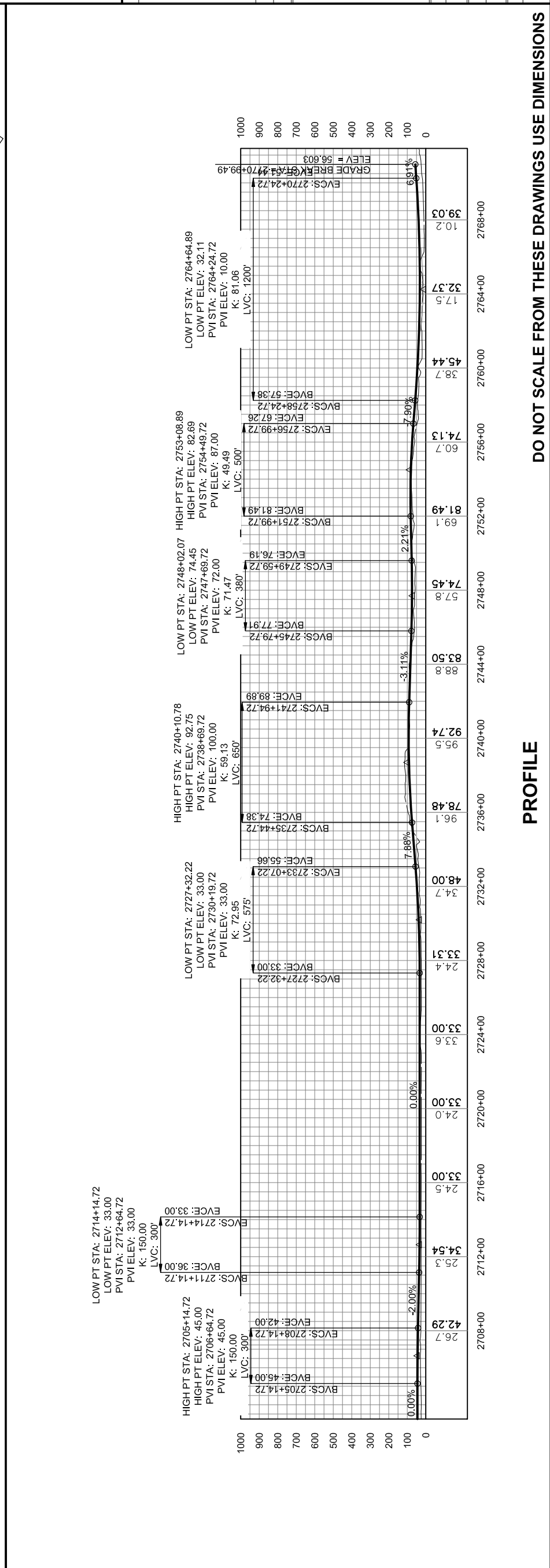
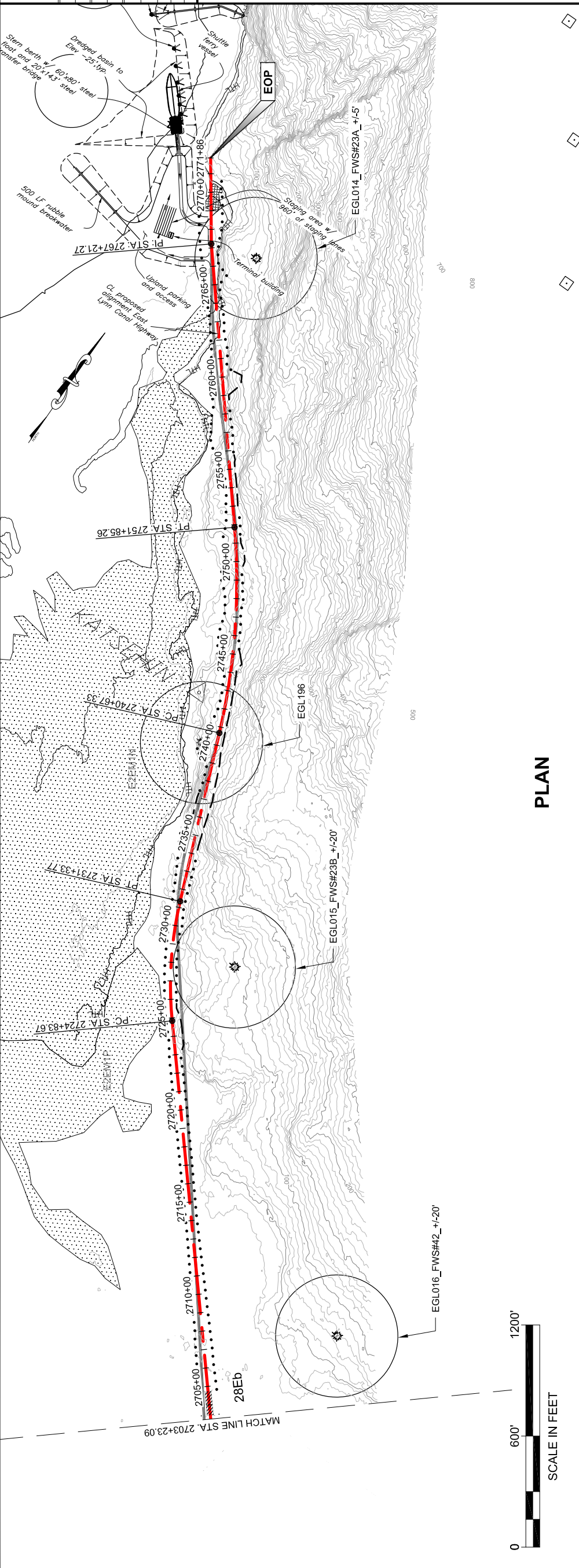
**2012 EIS  
 PLAN VIEW**

PROJECT DESIGNATION  
**71100**

STATE	YEAR
ALASKA	2012

SHEET NUMBER  
**EL38**

TOTAL SHEETS  
**38**



**DO NOT SCALE FROM THESE DRAWINGS USE DIMENSIONS**

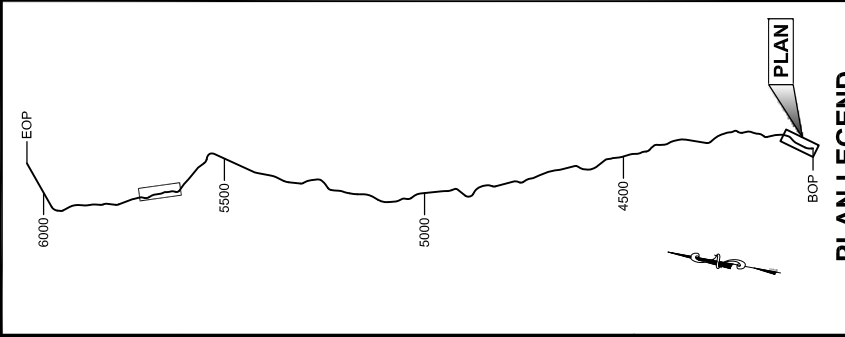
**PROFILE**

*This page intentionally left blank.*

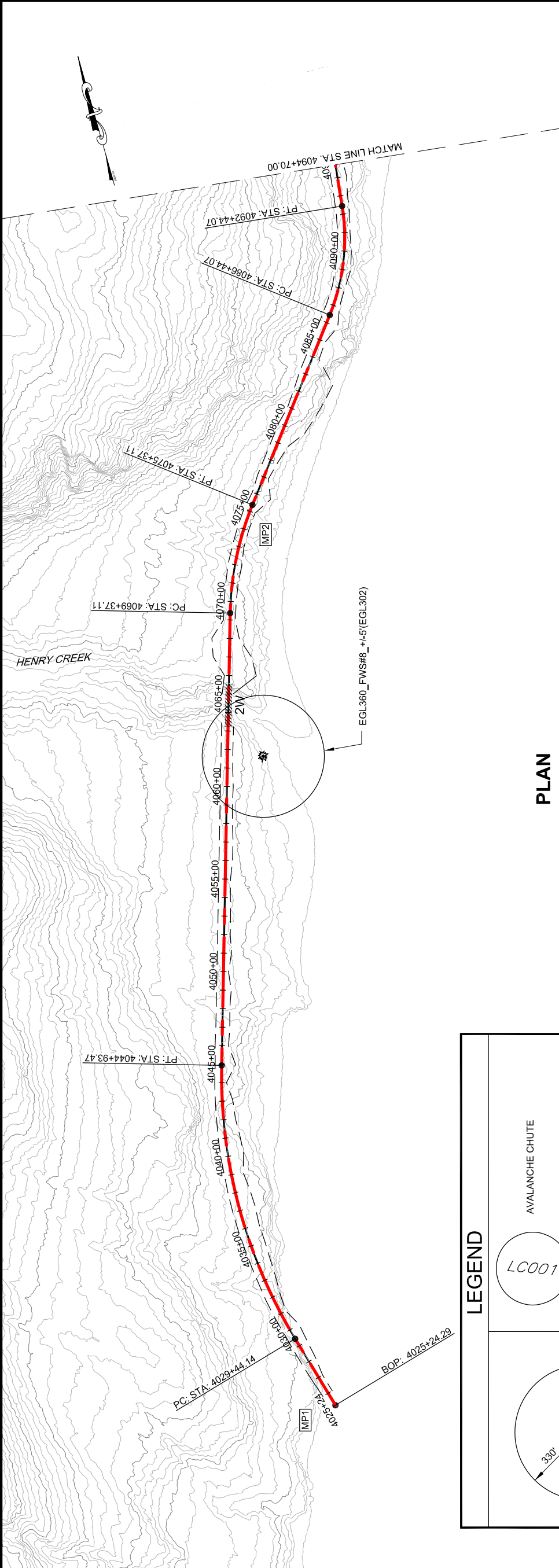
**Attachment B**  
**Juneau Access Improvements Project**  
**Revised West Lynn Canal Plan and Profile Sheets**

*This page intentionally left blank.*

PATH:Q:\JUN17\100\DR\10-2012 EIS  
 DWGS\71100\_2012 EIS WEST LYNN  
 PLANS.DWG  
 GEARY, NATE (DOT)  
 TAB: WL1 Friday, October 04, 2013 1:17:23 PM  
 APPENDIX NUMBER  
 ATTACHMENT NUMBER  
 RECORD OF REVISIONS  
 No. DATE DESCRIPTION

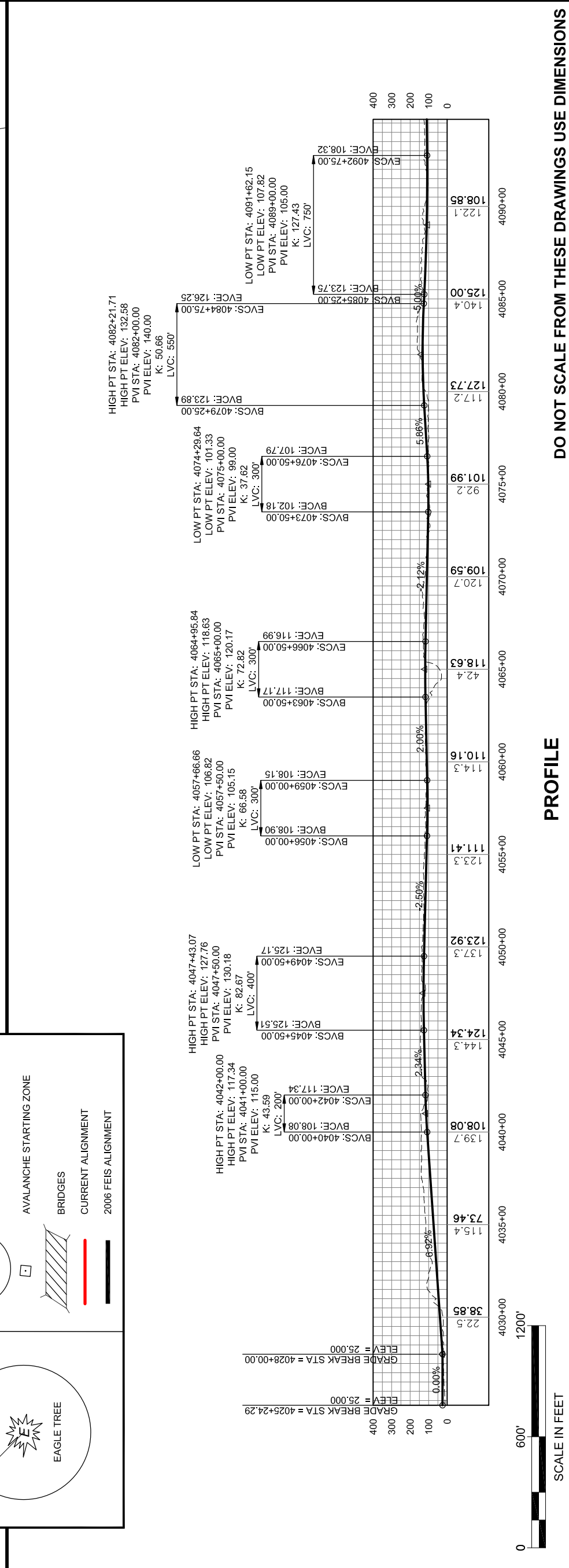


CHECKED BY:  
 DESIGNED BY:  
 DRAWN BY:  
 STATE OF ALASKA  
 DEPARTMENT OF TRANSPORTATION  
 & PUBLIC FACILITIES  
 SOUTHEAST REGION  
**JNU-WEST LYNN CANAL  
 HIGHWAY ALTERNATIVE 3  
 PROJECT #71100**  
**2012 EIS  
 PLAN & PROFILE  
 VIEW**  
 PROJECT DESIGNATION  
**71100**  
 STATE ALASKA  
 SHEET NUMBER WL1  
 YEAR 2013  
 TOTAL SHEETS XX



**LEGEND**

- AVAILANCHE CHUTE (circle with '1007')
- AVAILANCHE STARTING ZONE (square with diagonal lines)
- BRIDGES (hatched rectangle)
- CURRENT ALIGNMENT (red line)
- 2006 FEIS ALIGNMENT (black line)
- EAGLE TREE (starburst symbol)

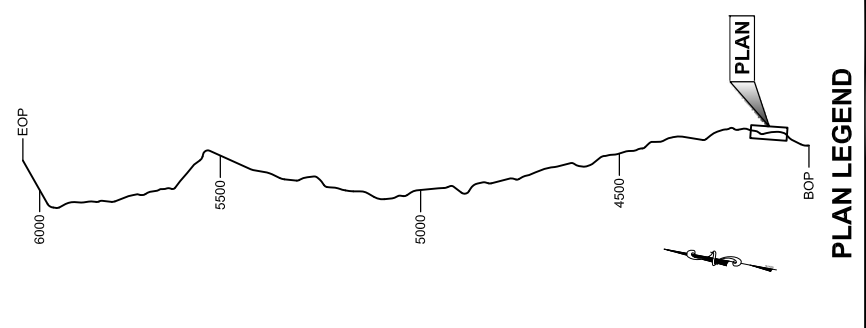




*This page intentionally left blank.*

PATH: C:\JULI100\DR\10-2012 EIS  
 DWGS\1100\_2012 EIS WEST LYNN  
 PLANS.DWG  
 GEARY, NATE (DOT)  
 TAB: WL2 Friday, October 04, 2013 1:17:42 PM  
 APPENDUM NUMBER  
 ATTACHMENT NUMBER

RECORD OF REVISIONS	
NO.	DATE



CHECKED BY:

**DRAFT**

DESIGNED BY:  
DRAWN BY:

STATE OF ALASKA  
DEPARTMENT OF TRANSPORTATION  
& PUBLIC FACILITIES  
SOUTHEAST REGION

JNL-WEST LYNN CANAL  
HIGHWAY ALTERNATIVE 3  
PROJECT #71100

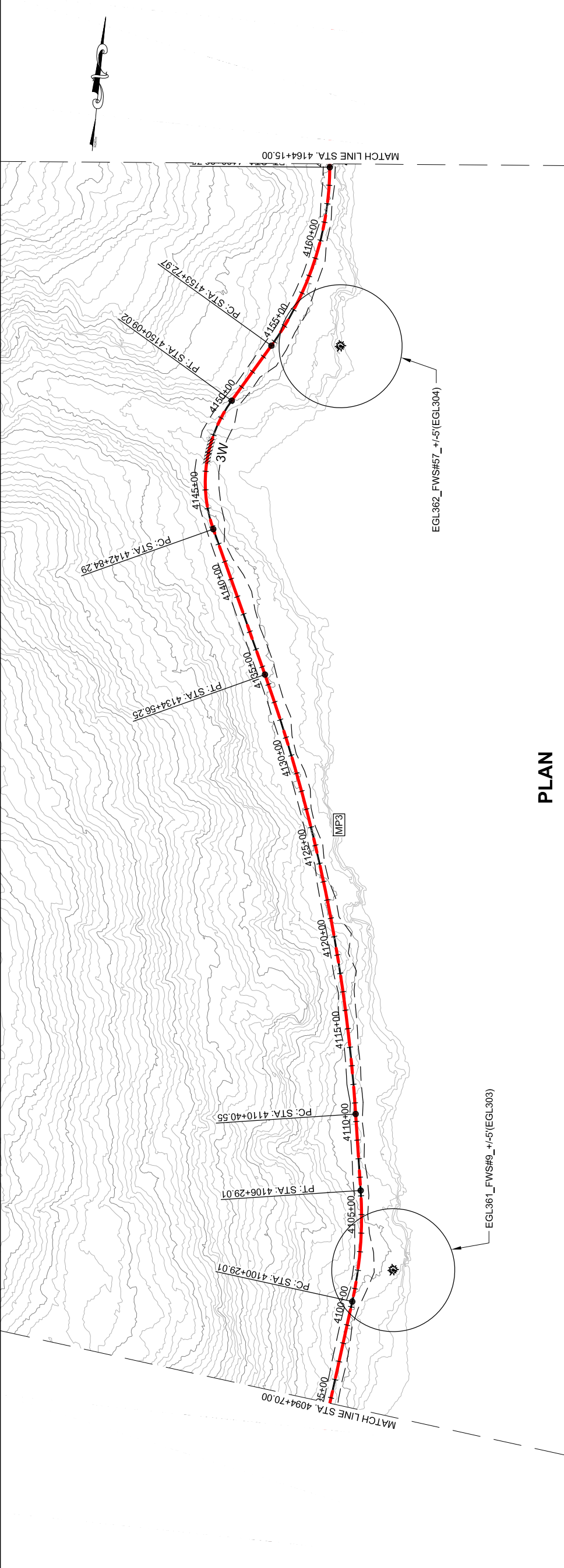
**2012 EIS  
PLAN & PROFILE  
VIEW**

PROJECT DESIGNATION  
**71100**

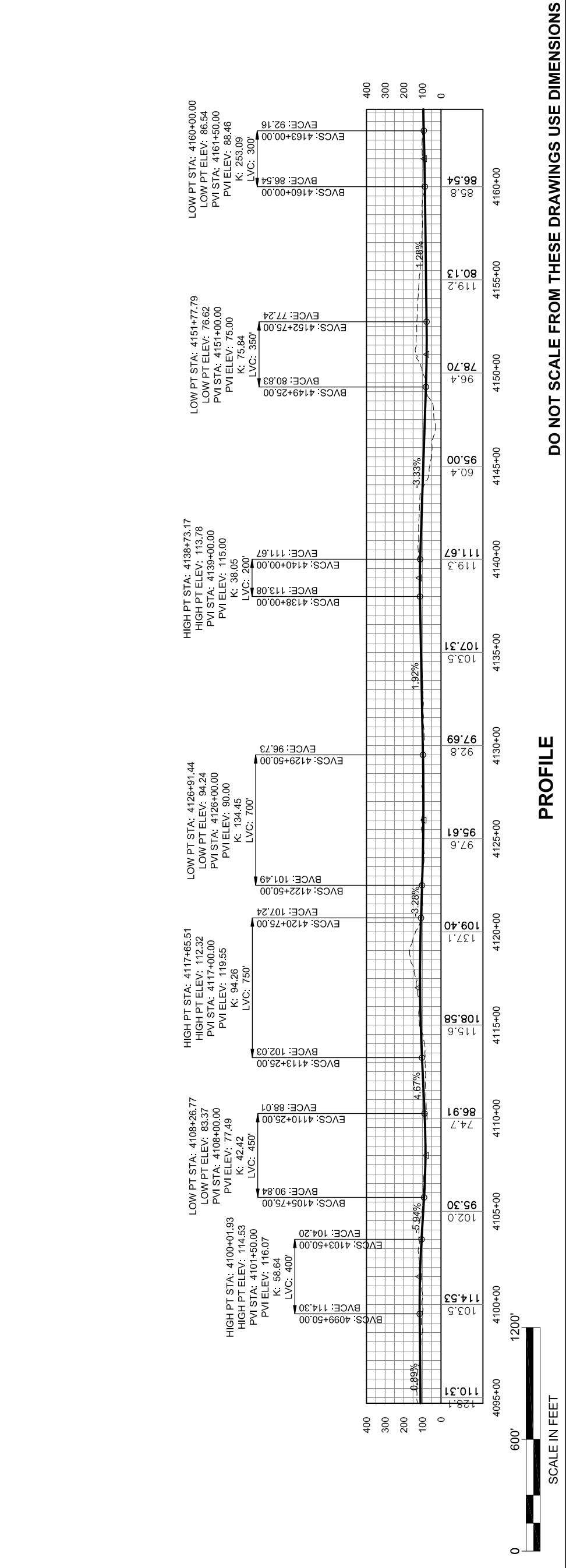
STATE	YEAR
ALASKA	2013

SHEET NUMBER  
**WL2**

TOTAL SHEETS  
**XX**



**PLAN**



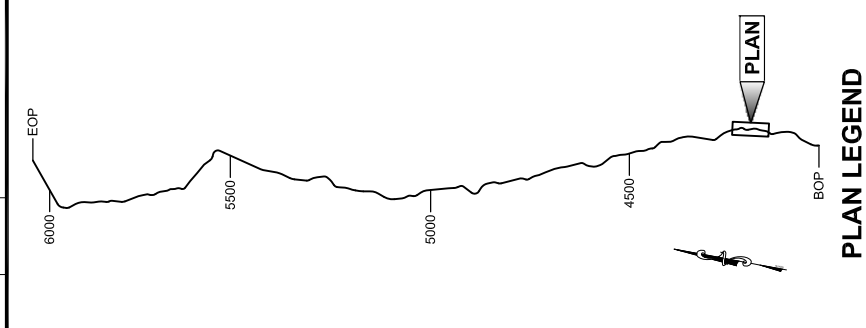
**PROFILE**

DO NOT SCALE FROM THESE DRAWINGS USE DIMENSIONS

SCALE IN FEET

*This page intentionally left blank.*

PATH: C:\UNIT71\00\DIR\10-2012 EIS  
 DWG: S1100\_2012 EIS WEST LYNN  
 PLANS.DWG  
 GEARY, NATE (DOT)  
 TAB: WL3 Friday, October 04, 2013 1:18:02 PM  
 APPENDUM NUMBER  
 ATTACHMENT NUMBER  
 RECORD OF REVISIONS  
 No. DATE DESCRIPTION



**PLAN & PROFILE VIEW**

**2012 EIS**

**PLAN & PROFILE VIEW**

**PROJECT #71100**

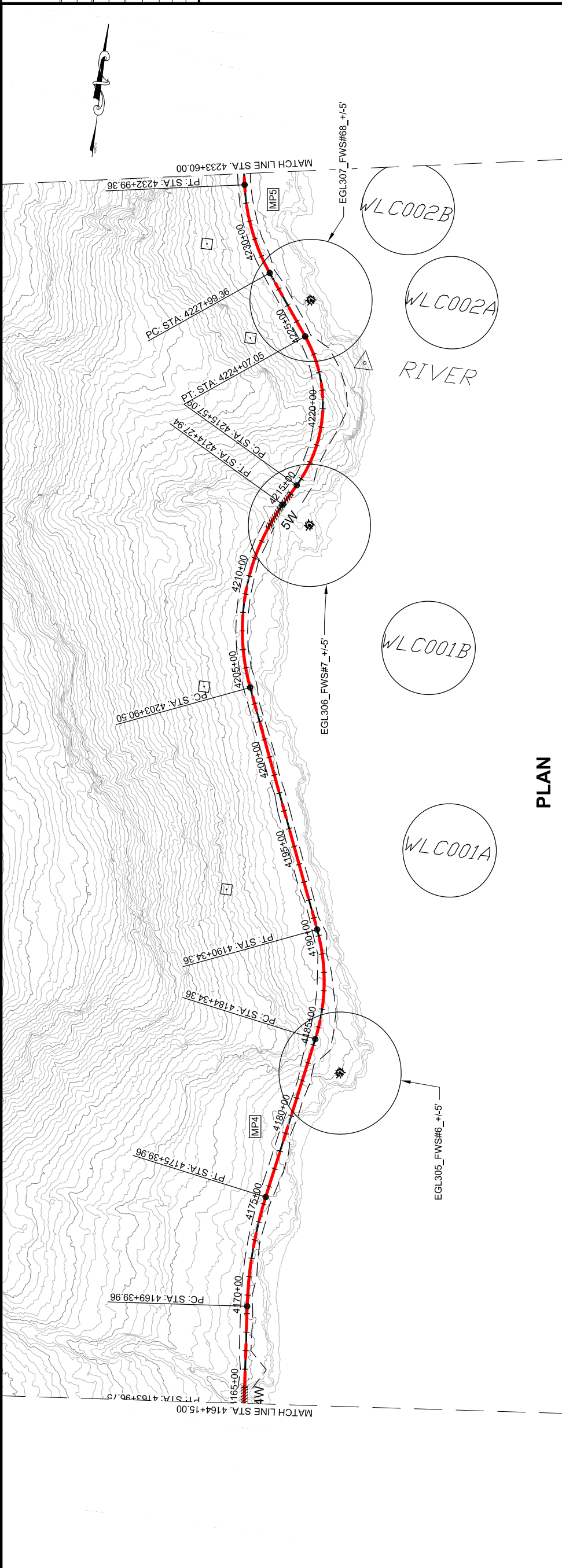
STATE OF ALASKA  
DEPARTMENT OF TRANSPORTATION  
& PUBLIC FACILITIES  
SOUTHEAST REGION

JNL-WEST LYNN CANAL  
HIGHWAY ALTERNATIVE 3

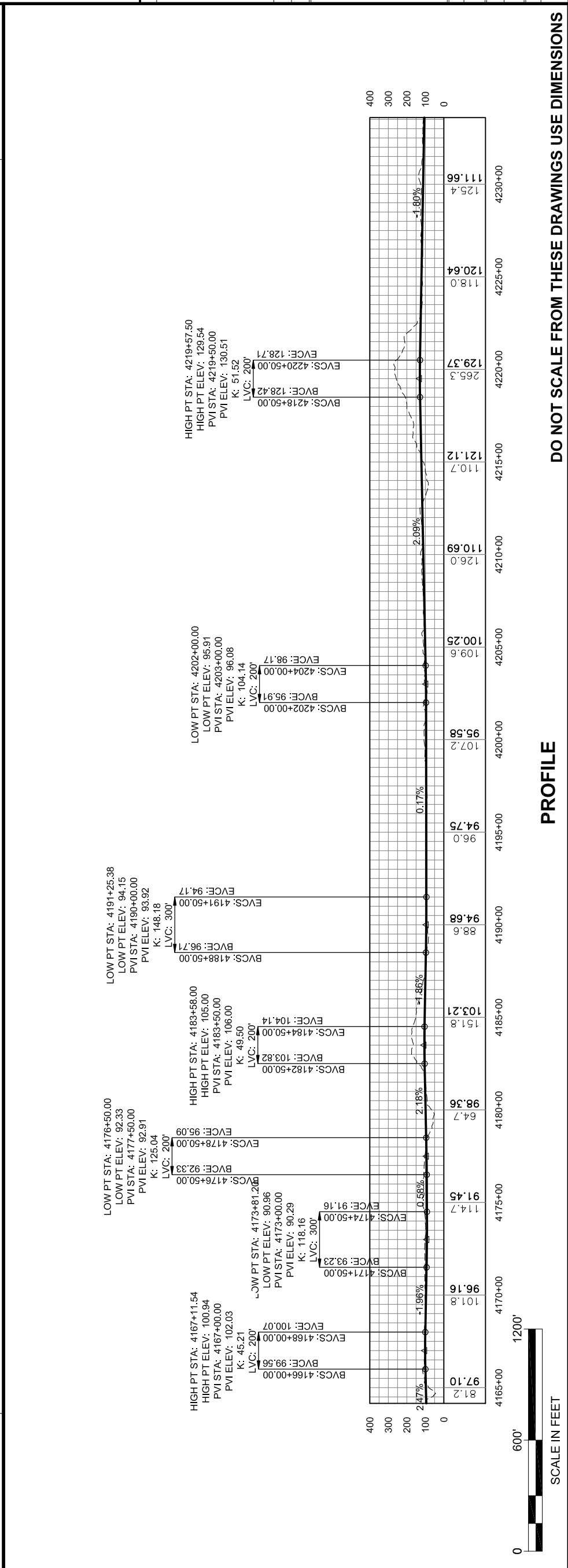
71100

PROJECT DESIGNATION

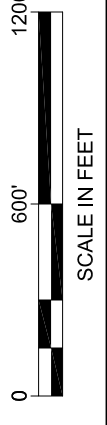
STATE	ALASKA	YEAR	2013
SHEET NUMBER	WL3	TOTAL SHEETS	XX



**PLAN**



**PROFILE**



**DO NOT SCALE FROM THESE DRAWINGS USE DIMENSIONS**

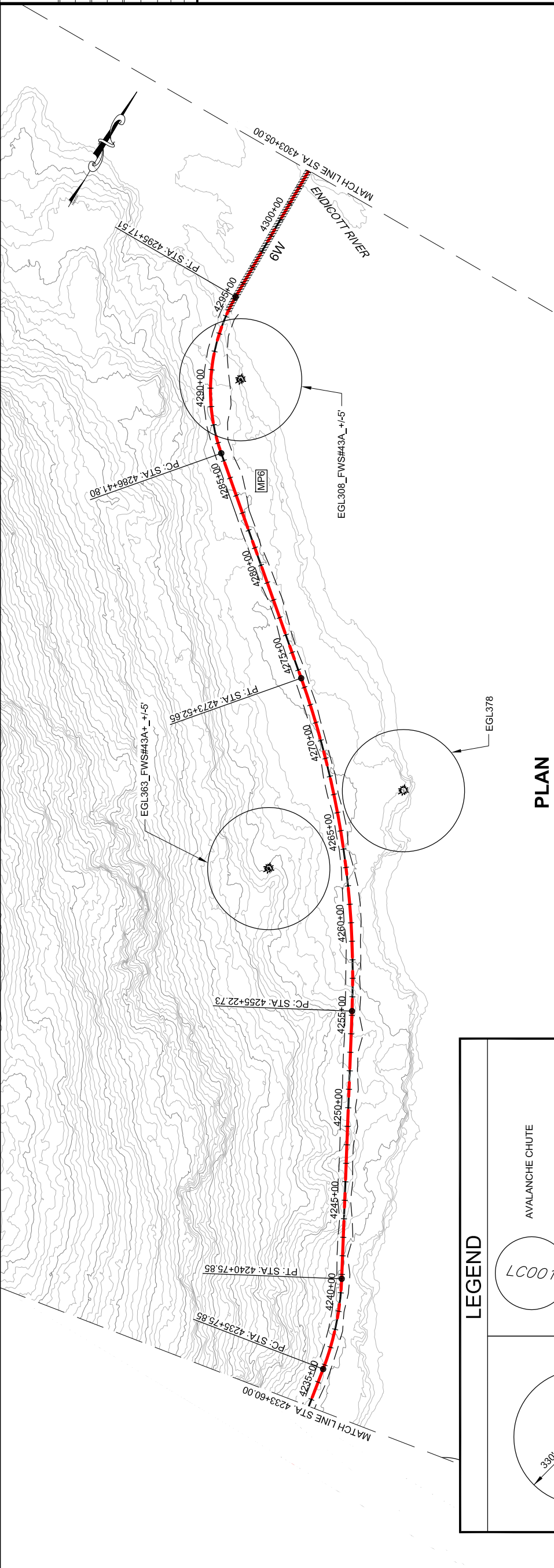
*This page intentionally left blank.*



PATH: C:\UNIT71\00\DIR\10-2012 EIS  
 DWG: S71100\_2012 EIS WEST LYNN  
 PLANS.DWG  
 GEARY, NATE (DOT)  
 TAB: WL4  
 Friday, October 04, 2013 1:18:22 PM

RECORD OF REVISIONS	
NO.	DESCRIPTION

APPENDIX NUMBER  
 ATTACHMENT NUMBER



**PLAN**

**LEGEND**

	EAGLE TREE
	AVALANCHE CHUTE
	AVALANCHE STARTING ZONE
	BRIDGES
	CURRENT ALIGNMENT
	2006 FEIS ALIGNMENT

**PLAN LEGEND**

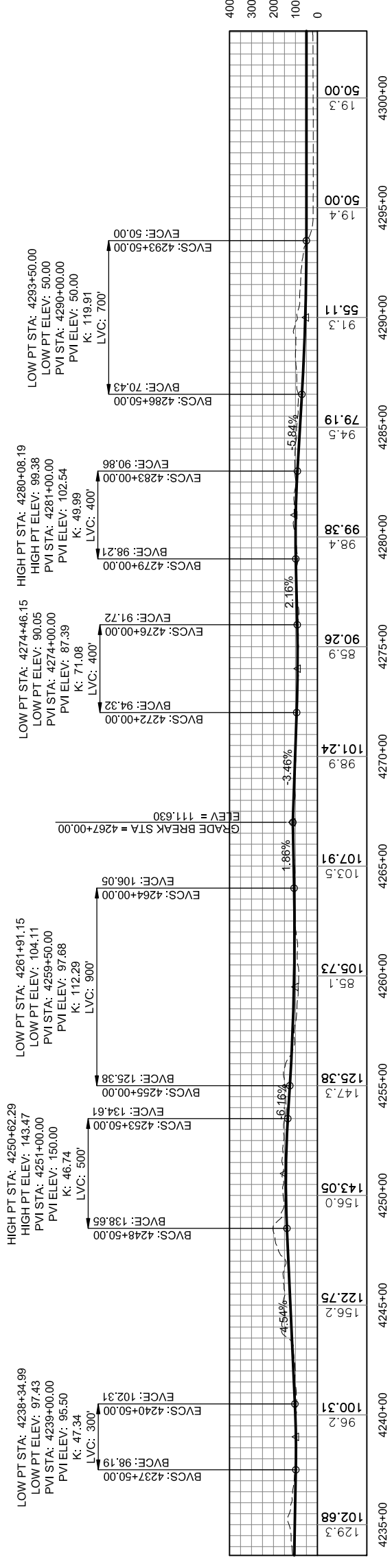
CHECKED BY:  
 DRAFT

DESIGNED BY:  
 DRAWN BY:  
 STATE OF ALASKA  
 DEPARTMENT OF TRANSPORTATION  
 & PUBLIC FACILITIES  
 SOUTHEAST REGION  
 JUNI-WEST LYNN CANAL  
 HIGHWAY ALTERNATIVE 3  
 PROJECT #71100

**2012 EIS  
 PLAN & PROFILE  
 VIEW**

PROJECT DESIGNATION  
**71100**

STATE	ALASKA	YEAR	2013
SHEET NUMBER	WL4	TOTAL SHEETS	XX



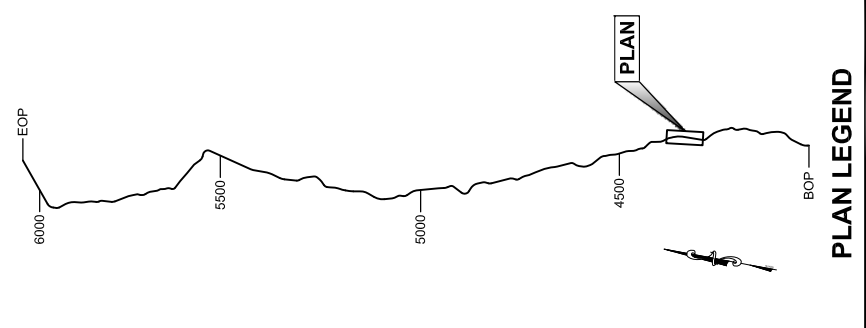
**PROFILE**

DO NOT SCALE FROM THESE DRAWINGS USE DIMENSIONS

*This page intentionally left blank.*

PATH: C:\L\17100\DR\10-2012 EIS  
 DWGS\1100\_2012 EIS WEST LYNN  
 PLANS.DWG  
 GEARY, NATE (DOT)  
 TAB: WL5 Friday, October 04, 2013 1:18:41 PM  
 APPENDUM NUMBER  
 ATTACHMENT NUMBER

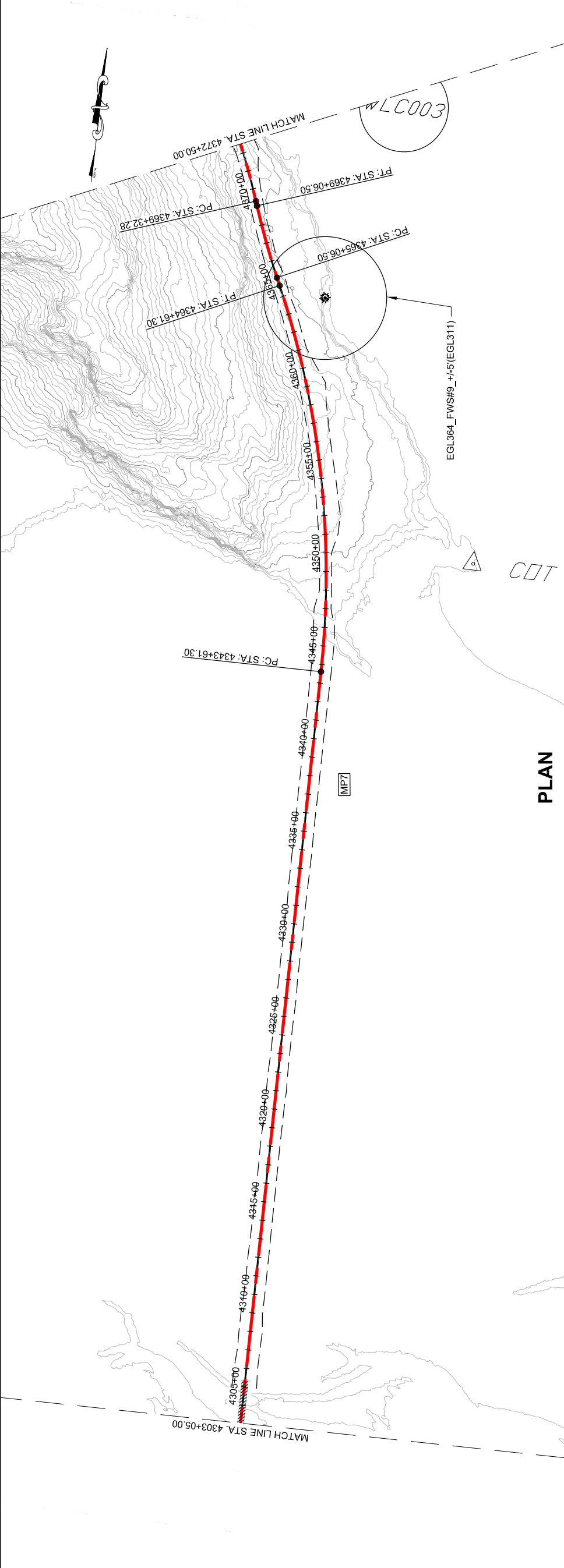
RECORD OF REVISIONS	
NO.	DATE DESCRIPTION



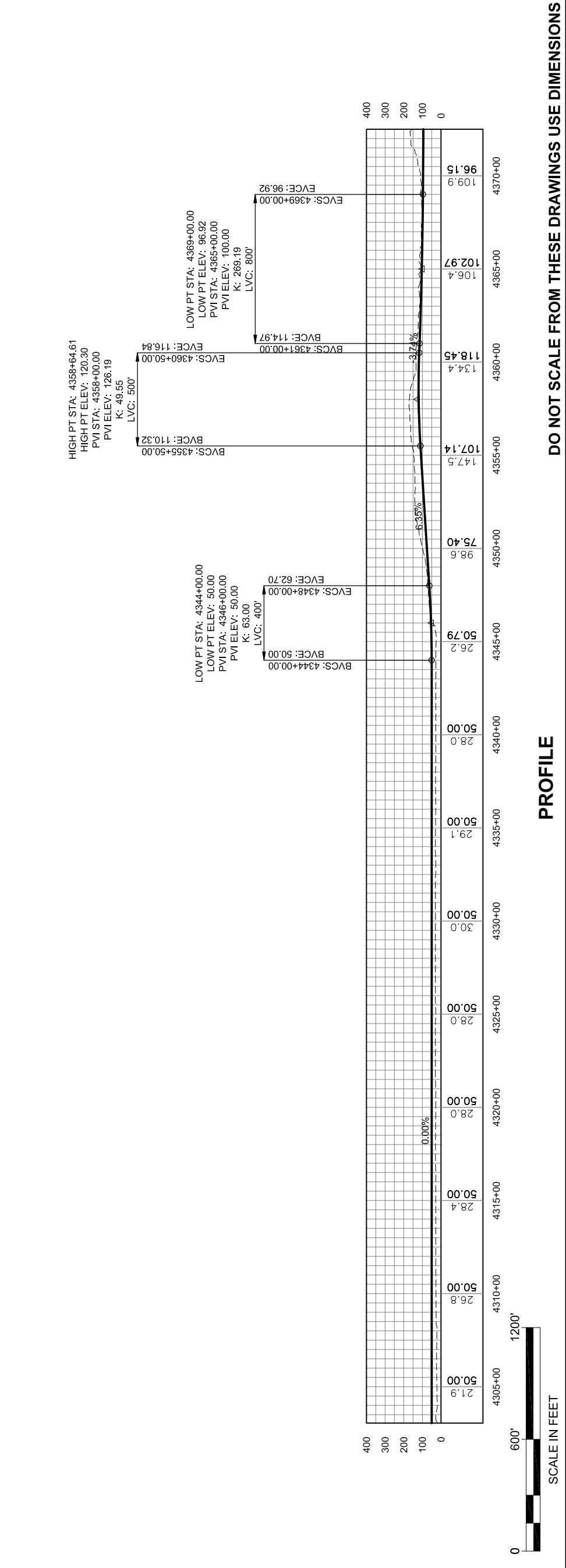
CHECKED BY:  
 DESIGNED BY:  
 DRAWN BY:

STATE OF ALASKA  
 DEPARTMENT OF TRANSPORTATION  
 & PUBLIC FACILITIES  
 SOUTHEAST REGION  
 JUNI-WEST LYNN CANAL  
 HIGHWAY ALTERNATIVE 3  
 PROJECT #71100  
**2012 EIS  
 PLAN & PROFILE  
 VIEW**

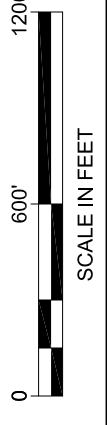
PROJECT DESIGNATION	71100
STATE	ALASKA
YEAR	2013
SHEET NUMBER	WL5
TOTAL SHEETS	XX



**PLAN**



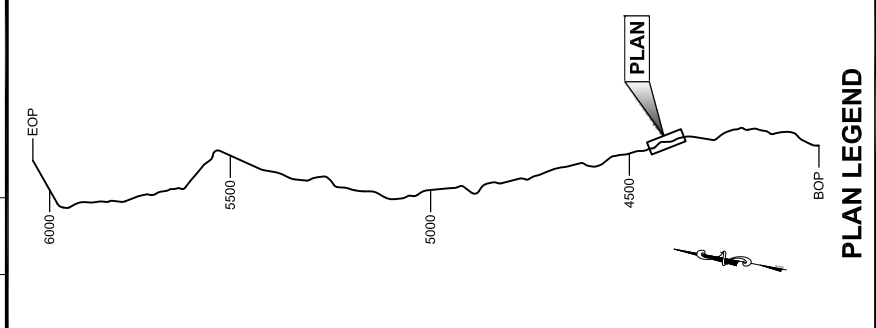
**PROFILE**



**DO NOT SCALE FROM THESE DRAWINGS USE DIMENSIONS**

*This page intentionally left blank.*

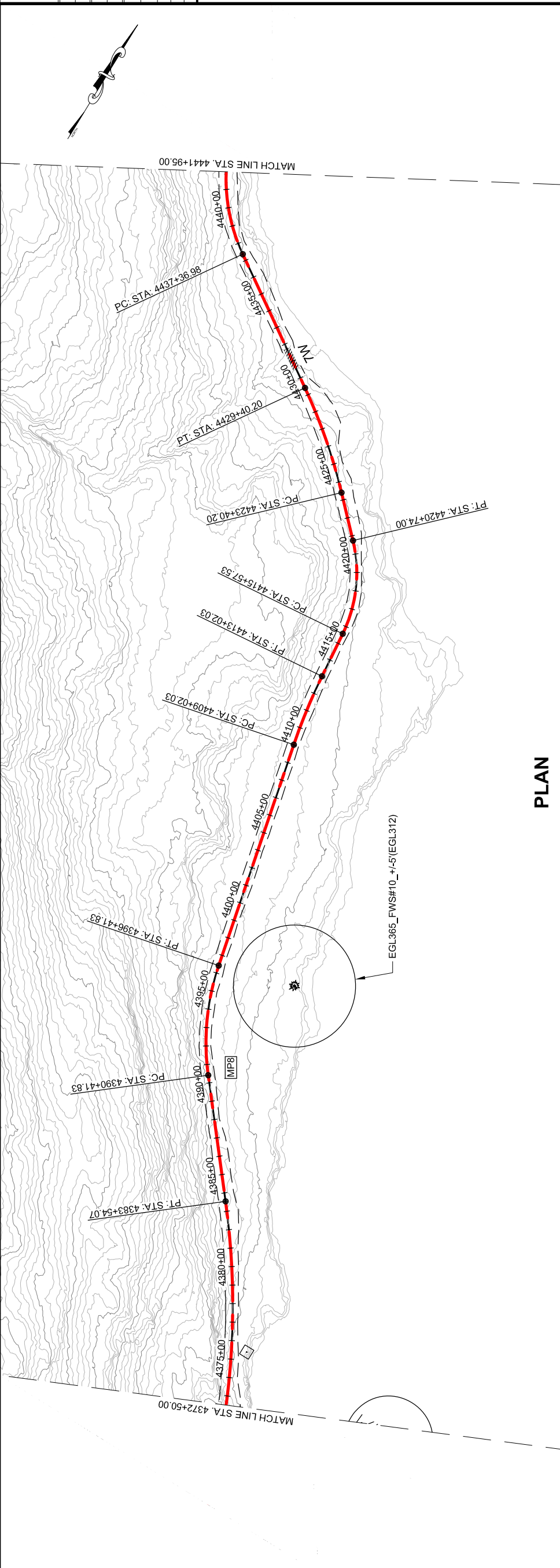
PATH: C:\JUNIT7100\DR\10-2012 EIS  
 DWGS\71100\_2012 EIS WEST LYNN  
 PLANS.DWG  
 GEARY, NATE (DOT)  
 TAB: WL6  
 Friday, October 04, 2013 1:19:02 PM  
 APPENDUM NUMBER  
 ATTACHMENT NUMBER  
 RECORD OF REVISIONS  
 No. DATE DESCRIPTION



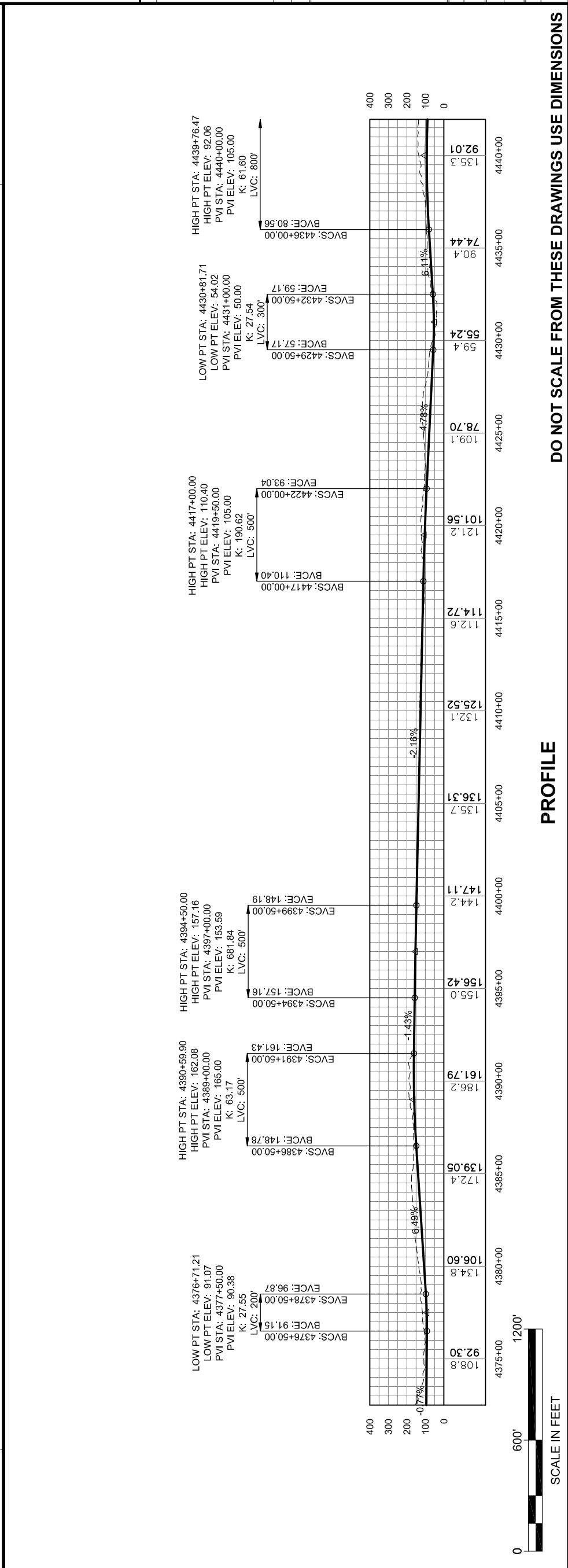
CHECKED BY:  
 DESIGNED BY:  
 DRAWN BY:

STATE OF ALASKA  
 DEPARTMENT OF TRANSPORTATION  
 & PUBLIC FACILITIES  
 SOUTHEAST REGION  
 JUNI-WEST LYNN CANAL  
 HIGHWAY ALTERNATIVE 3  
 PROJECT #71100  
**2012 EIS  
 PLAN & PROFILE  
 VIEW**

PROJECT DESIGNATION	71100
STATE	ALASKA
YEAR	2013
SHEET NUMBER	WL6
TOTAL SHEETS	XX



PLAN



SCALE IN FEET

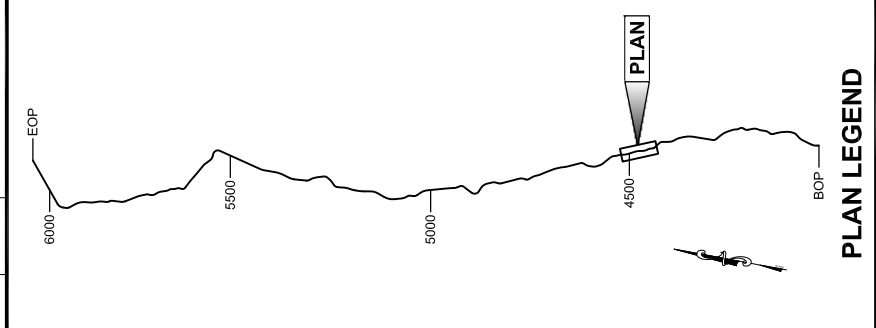
PROFILE

DO NOT SCALE FROM THESE DRAWINGS USE DIMENSIONS



*This page intentionally left blank.*

PATH: C:\UNITS\1100\DR\10-2012 EIS  
 DWG: S1100\_2012 EIS WEST LYNN  
 PLANS.DWG  
 GEARY, NATE (DOT)  
 TAB: WL7  
 Friday, October 04, 2013 1:19:22 PM  
 APPENDUM NUMBER  
 ATTACHMENT NUMBER



CHECKED BY:

**DRAFT**

DESIGNED BY:

DRAWN BY:

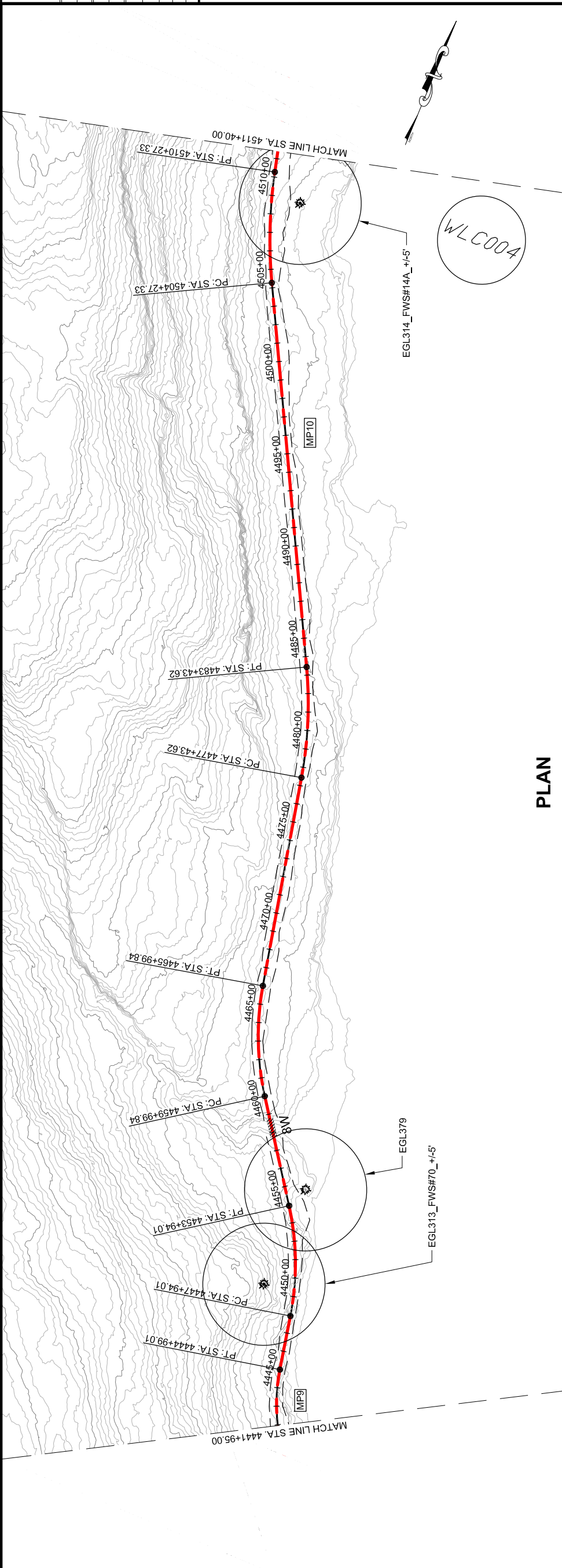
STATE OF ALASKA  
DEPARTMENT OF TRANSPORTATION  
& PUBLIC FACILITIES  
SOUTHEAST REGION

JNU-WEST LYNN CANAL  
HIGHWAY ALTERNATIVE 3  
PROJECT #71100

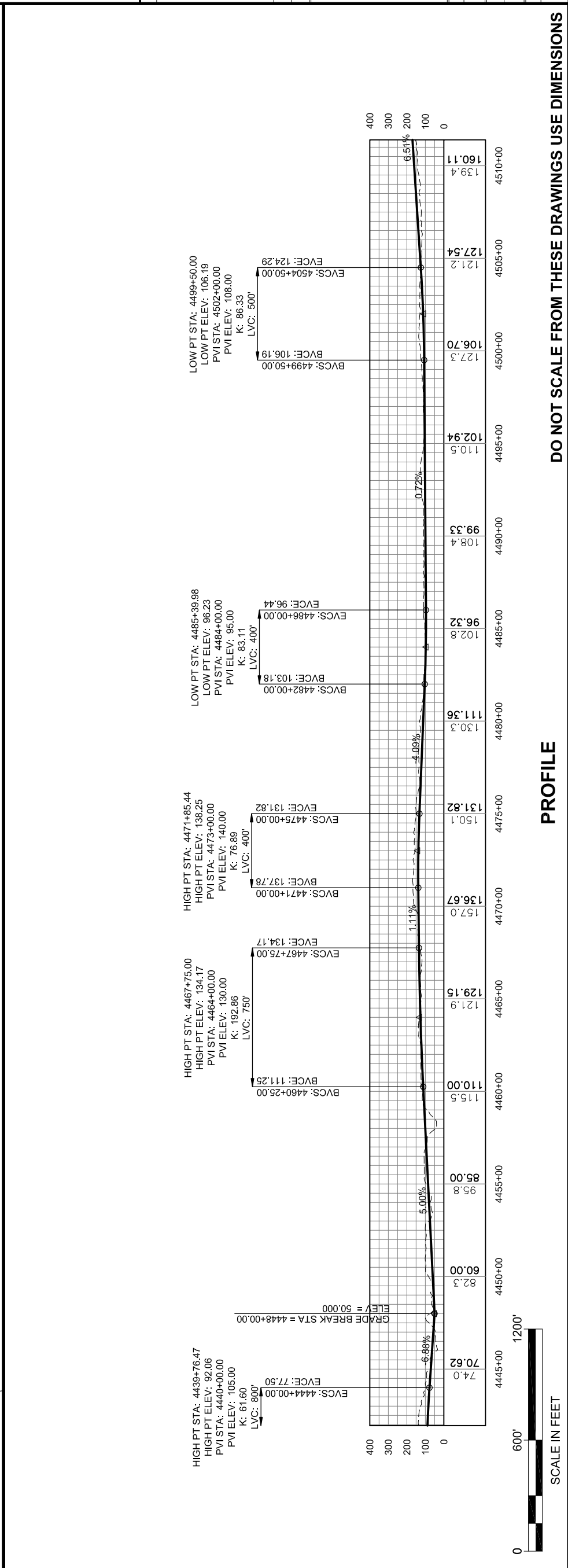
**2012 EIS  
PLAN & PROFILE  
VIEW**

PROJECT DESIGNATION  
**71100**

STATE	YEAR
ALASKA	2013
SHEET NUMBER	TOTAL SHEETS
WL7	XX

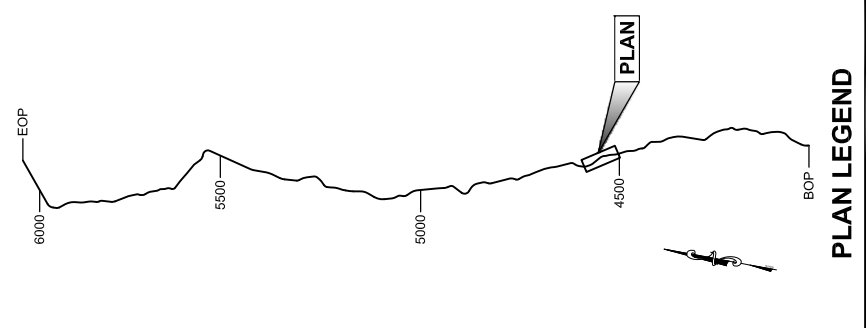


**PLAN**

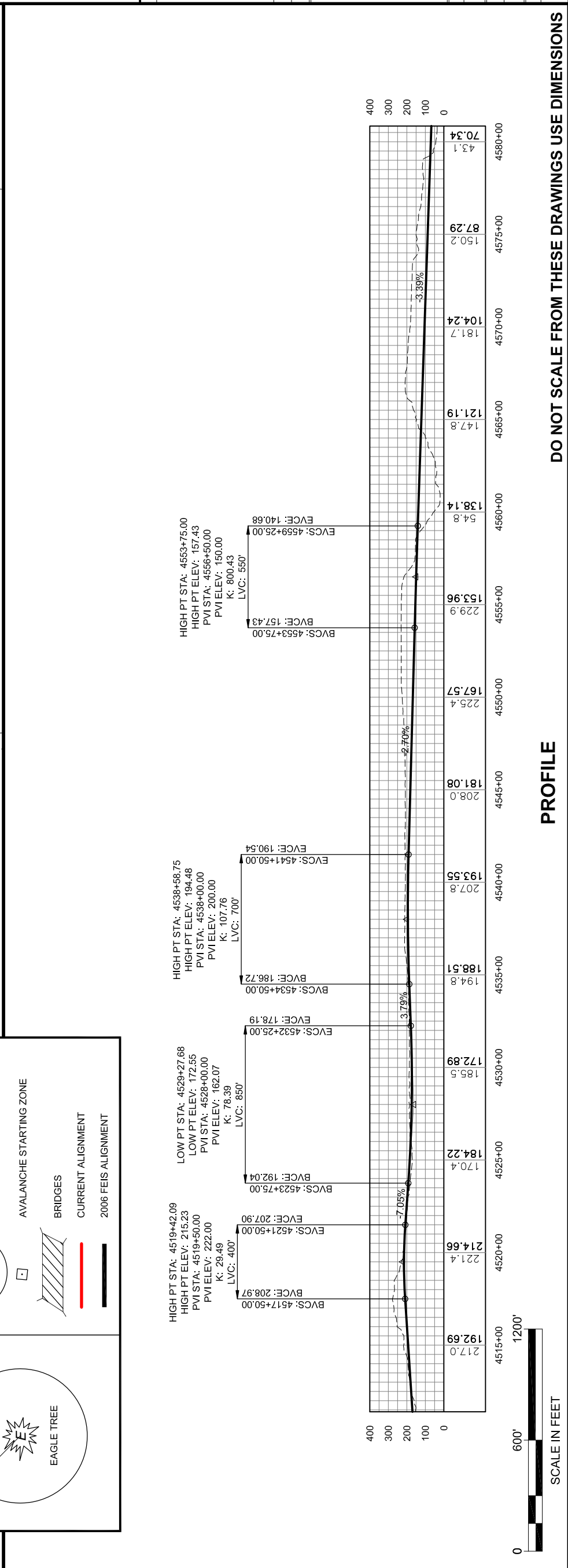
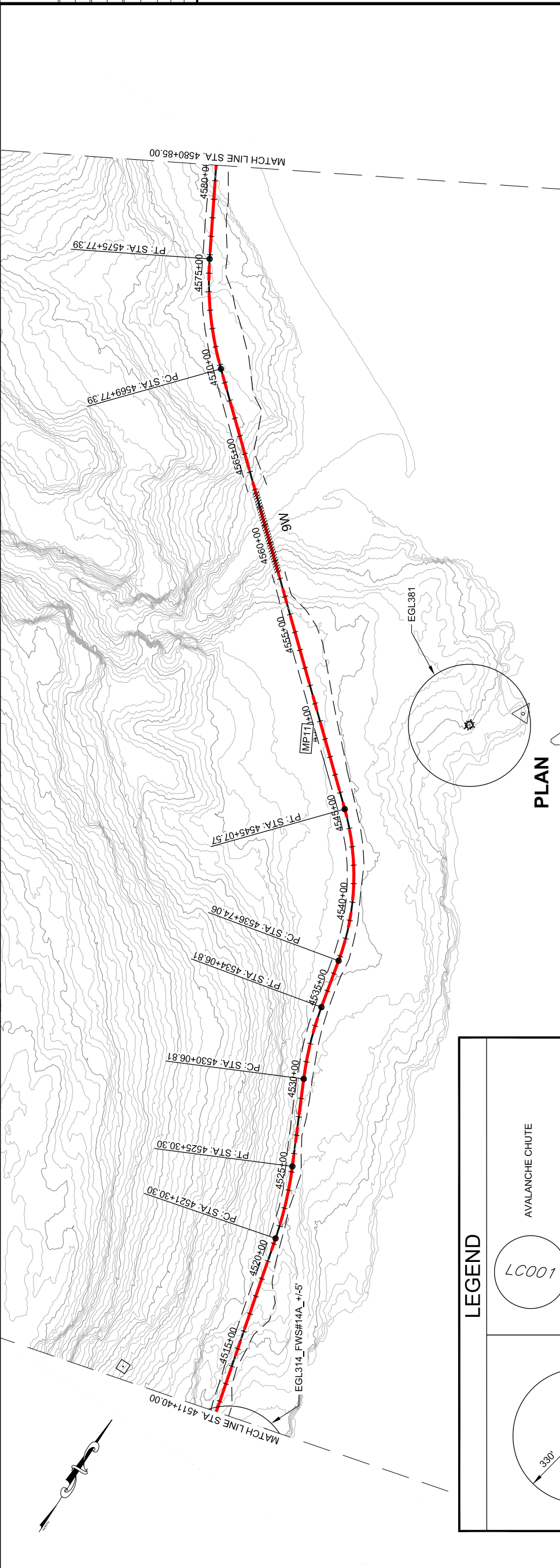


*This page intentionally left blank.*

PATH: C:\JUN17\100\DR\10-2012 EIS  
 DWG: S\1100\_2012 EIS WEST LYNN  
 PLANS.DWG  
 GEARY, NATE (DOT)  
 TAB: WL8 Friday, October 04, 2013 1:19:42 PM  
 APPENDUM NUMBER  
 ATTACHMENT NUMBER  
 RECORD OF REVISIONS  
 No. DATE DESCRIPTION



CHECKED BY:  
 DESIGNED BY:  
 DRAWN BY:  
 STATE OF ALASKA  
 DEPARTMENT OF TRANSPORTATION  
 & PUBLIC FACILITIES  
 SOUTHEAST REGION  
**JNU-WEST LYNN CANAL  
 HIGHWAY ALTERNATIVE 3  
 PROJECT #71100**  
**2012 EIS  
 PLAN & PROFILE  
 VIEW**  
 PROJECT DESIGNATION  
**71100**  
 STATE ALASKA YEAR **2013**  
 SHEET NUMBER **WL8** TOTAL SHEETS **XX**



**LEGEND**

- AVALANCHE CHUTE (Symbol: Circle with '1007')
- AVALANCHE STARTING ZONE (Symbol: Square with 'X')
- BRIDGES (Symbol: Hatched rectangle)
- CURRENT ALIGNMENT (Symbol: Red line)
- 2006 FEIS ALIGNMENT (Symbol: Black line)
- EAGLE TREE (Symbol: Star with 'E')



DO NOT SCALE FROM THESE DRAWINGS USE DIMENSIONS

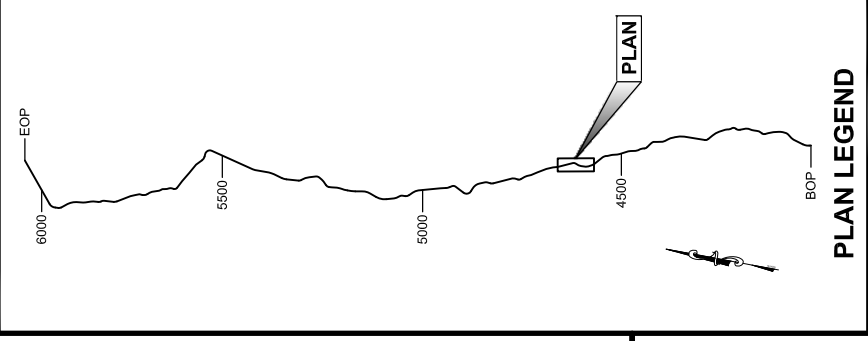
**PROFILE**

*This page intentionally left blank.*



PATH:\CLINUT\71100\DR\10-2012 EIS  
 DWGS\71100\_2012 EIS WEST LYNN  
 PLANS.DWG  
 GEARY, NATE (DOT)  
 TAB: WL9 Friday, October 04, 2013 1:20:02 PM

RECORD OF REVISIONS	
NO.	DATE

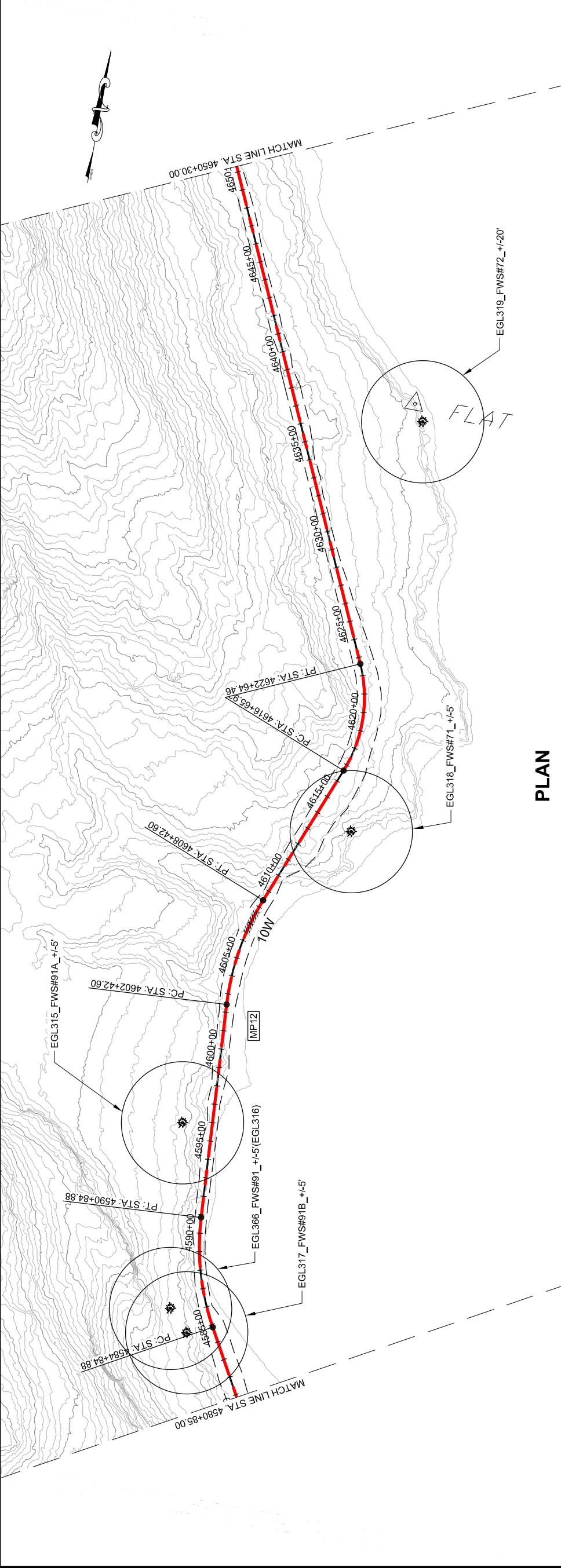


CHECKED BY:  
 DESIGNED BY:  
 DRAWN BY:

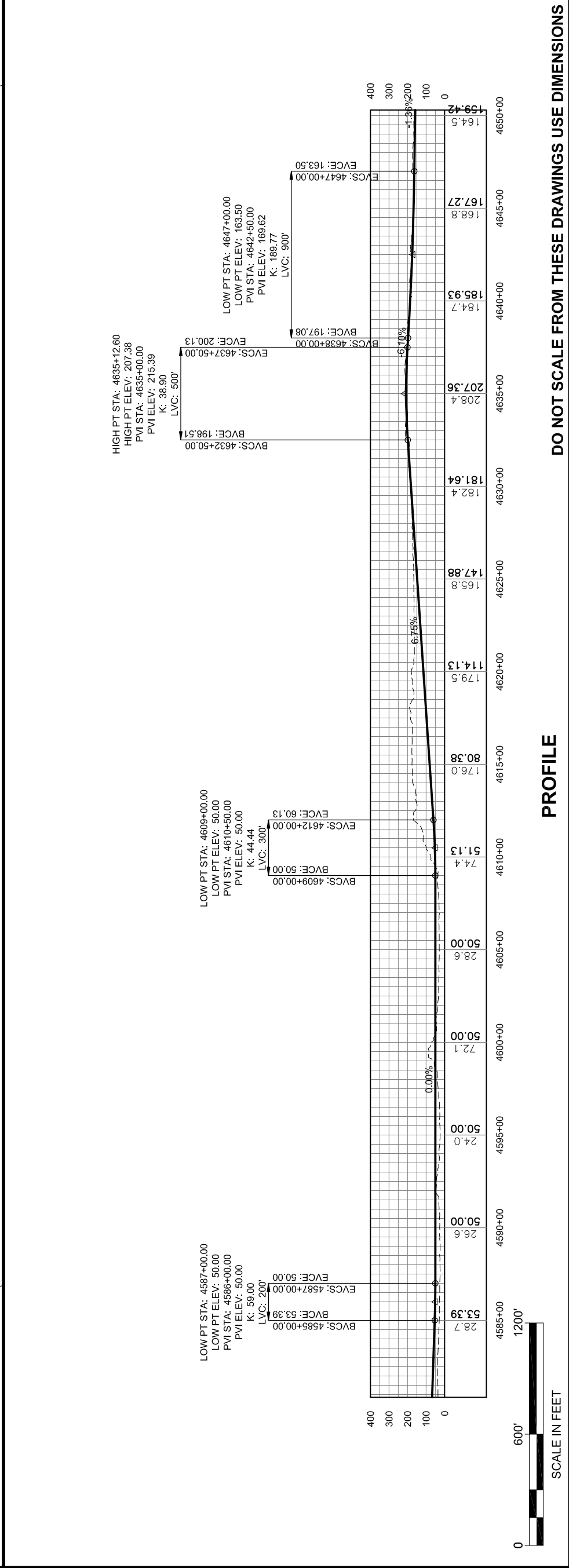
STATE OF ALASKA  
 DEPARTMENT OF TRANSPORTATION  
 & PUBLIC FACILITIES  
 SOUTHEAST REGION  
 JUNI-WEST LYNN CANAL  
 HIGHWAY ALTERNATIVE 3  
 PROJECT #71100

**2012 EIS  
 PLAN & PROFILE  
 VIEW**

PROJECT DESIGNATION	71100
STATE	ALASKA
YEAR	2013
SHEET NUMBER	WL9
TOTAL SHEETS	XX



**PLAN**



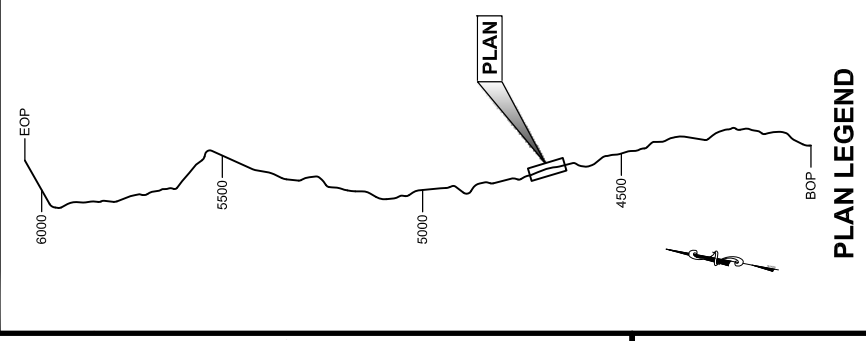
**PROFILE**

DO NOT SCALE FROM THESE DRAWINGS USE DIMENSIONS

*This page intentionally left blank.*

PATH:\C:\L\17100\DR\10-2012 EIS  
 DWG\SY1100\_2012 EIS WEST LYNN  
 PLANS.DWG  
 GEARY, NATE (DOT)  
 TAB: WL10 Friday, October 04, 2013 1:20:22 PM

RECORD OF REVISIONS	
NO.	DATE

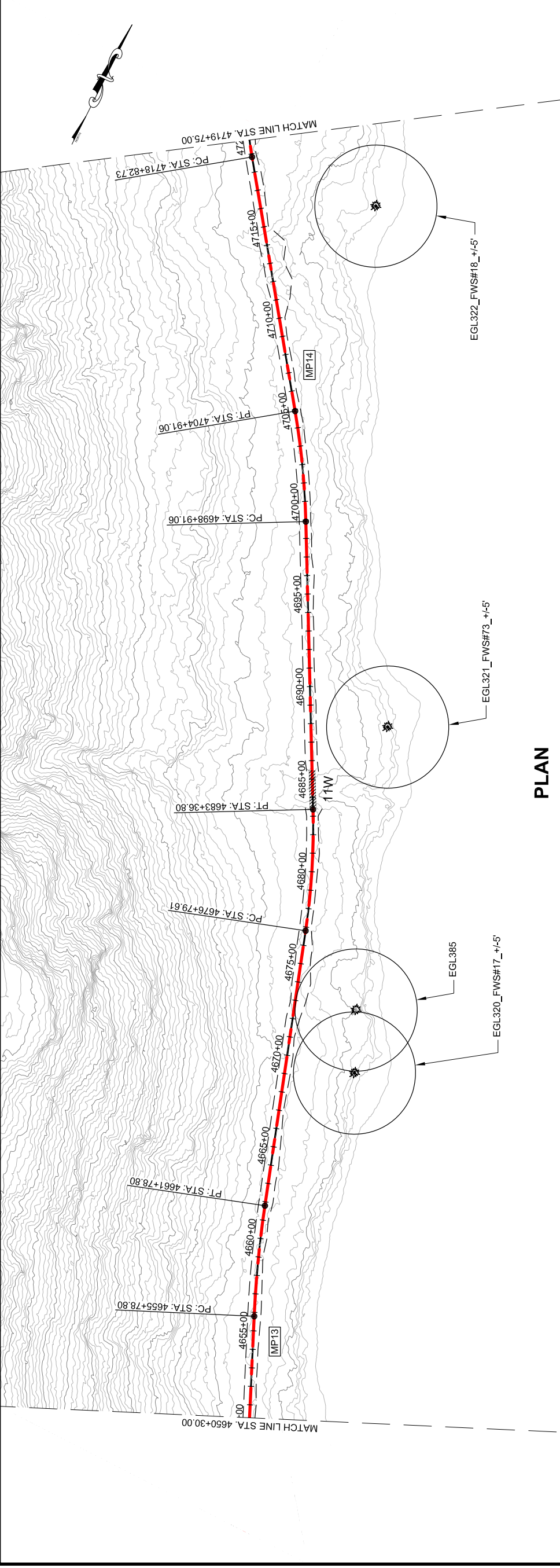


CHECKED BY:  
 DESIGNED BY:  
 DRAWN BY:

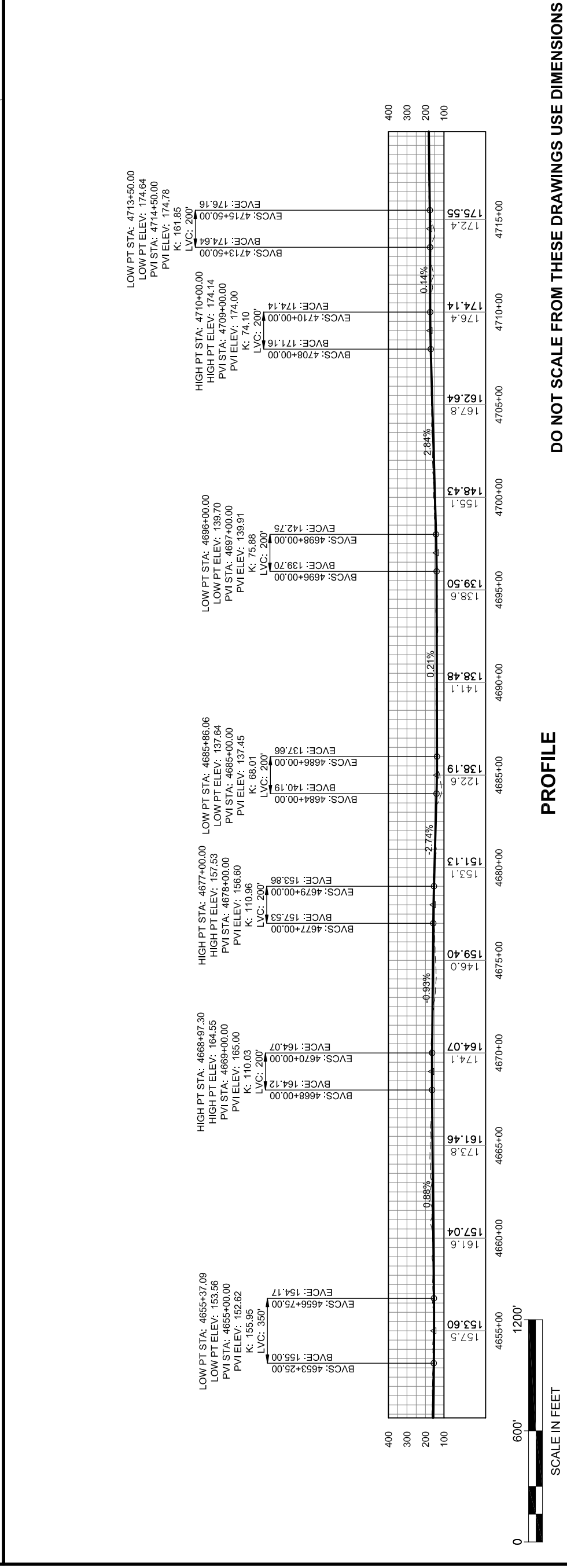
STATE OF ALASKA  
 DEPARTMENT OF TRANSPORTATION  
 & PUBLIC FACILITIES  
 SOUTHEAST REGION  
 JUNI-WEST LYNN CANAL  
 HIGHWAY ALTERNATIVE 3  
 PROJECT #71100

**2012 EIS  
 PLAN & PROFILE  
 VIEW**

PROJECT DESIGNATION	71100
STATE	ALASKA
YEAR	2013
SHEET NUMBER	WL10
TOTAL SHEETS	XX



**PLAN**



**PROFILE**

DO NOT SCALE FROM THESE DRAWINGS USE DIMENSIONS

*This page intentionally left blank.*