

Appendix B

Brown Bear Maps

Selected figures from Flynn et al. 2012

This page intentionally left blank.

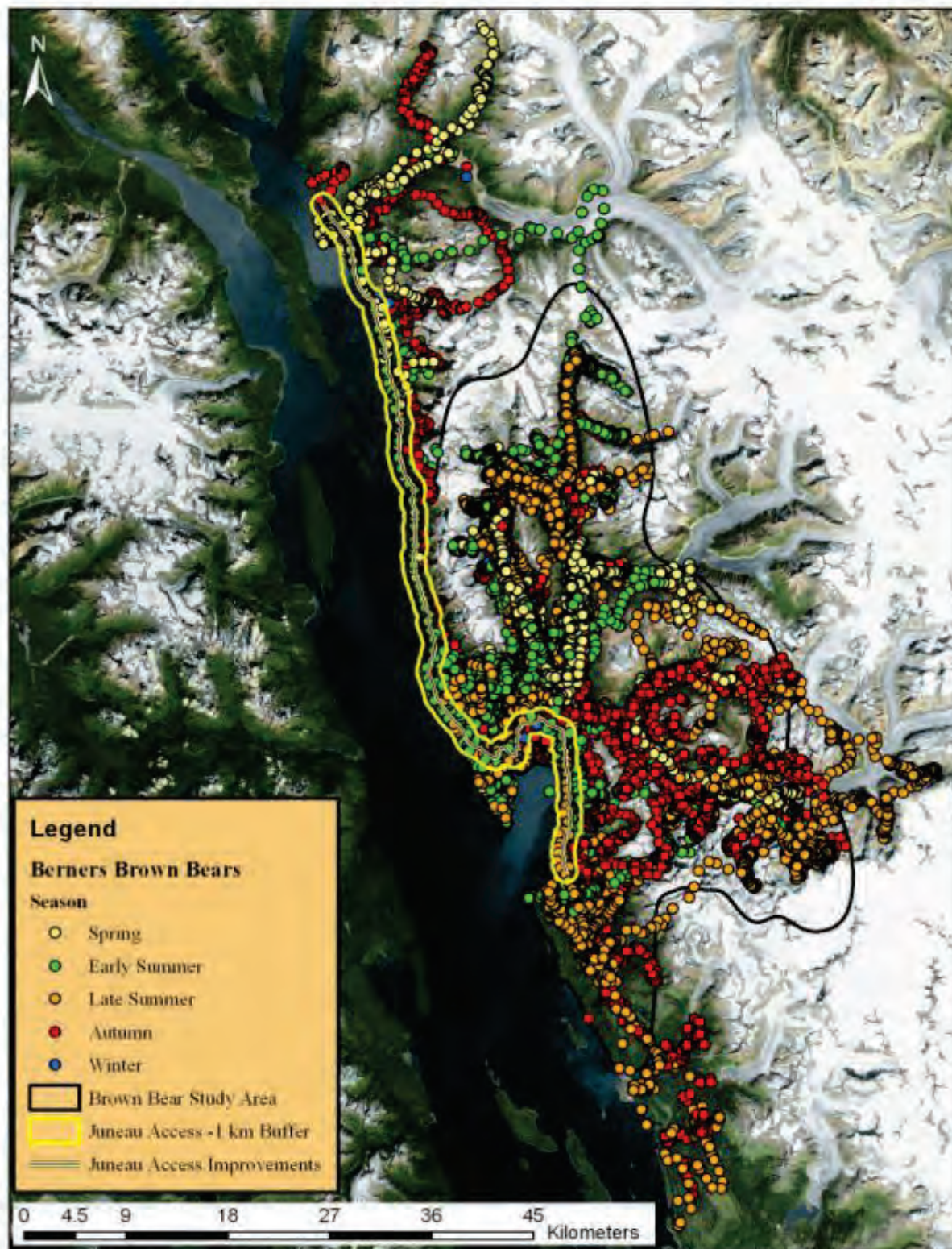


Figure B1. Seasonal brown bear GPS locations collected in the Berners Bay study area 2006 to 2010.

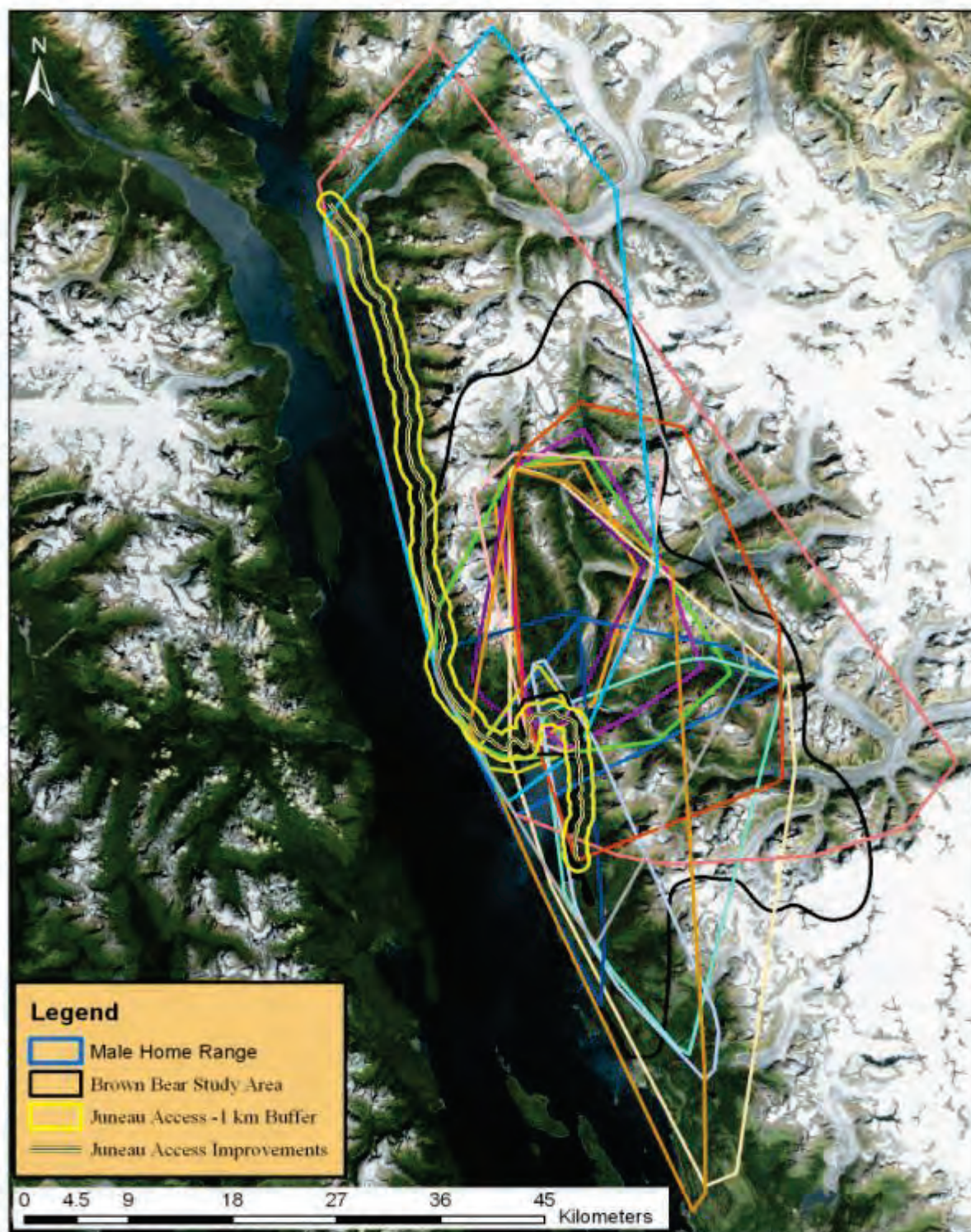


Figure B2. Home ranges (minimum convex polygon) of male brown bears in the Berners Bay study area during 2006 to 2010.

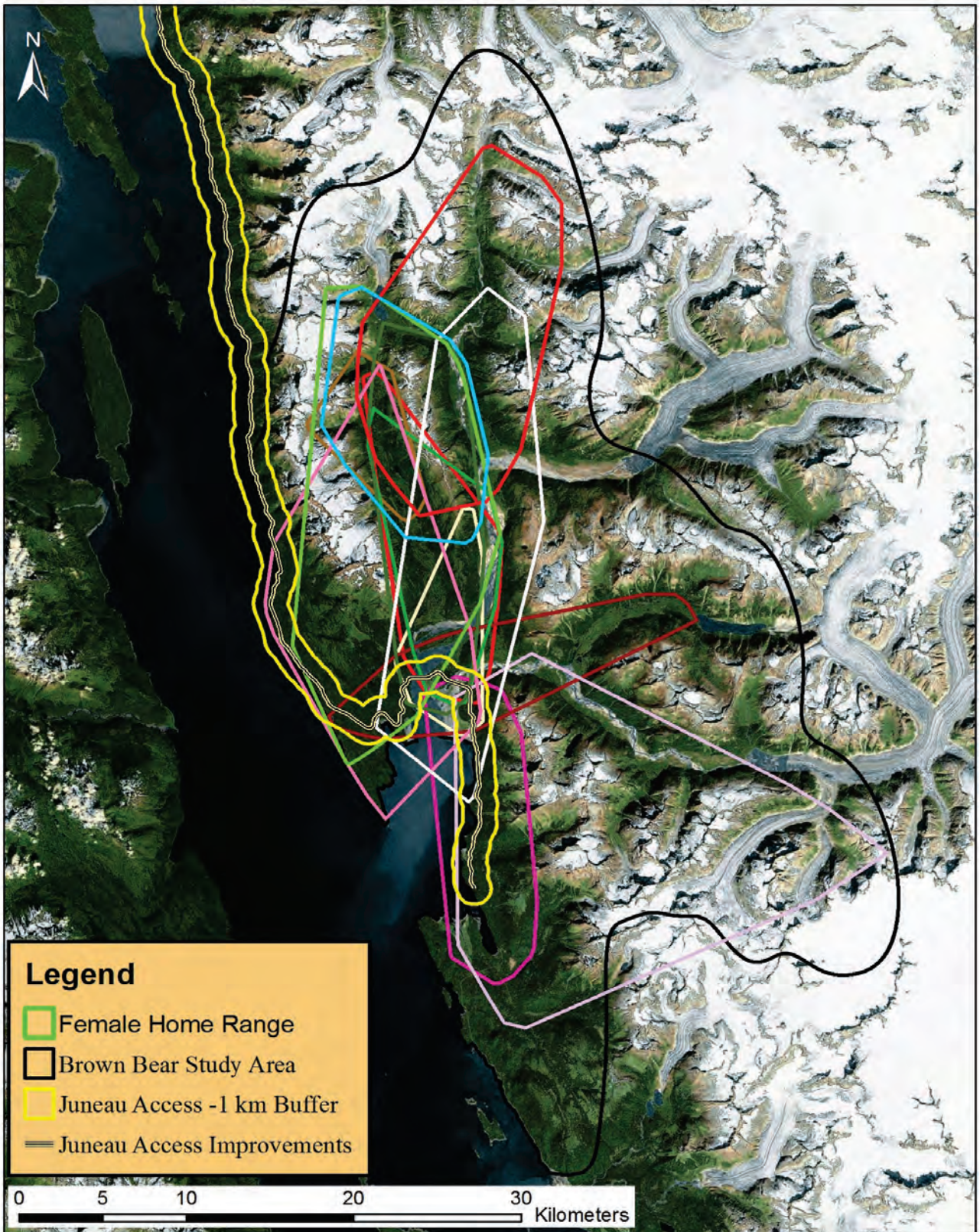


Figure B3. Home ranges (minimum convex polygon) of female brown bears in the Berners Bay study area during 2006 to 2010.

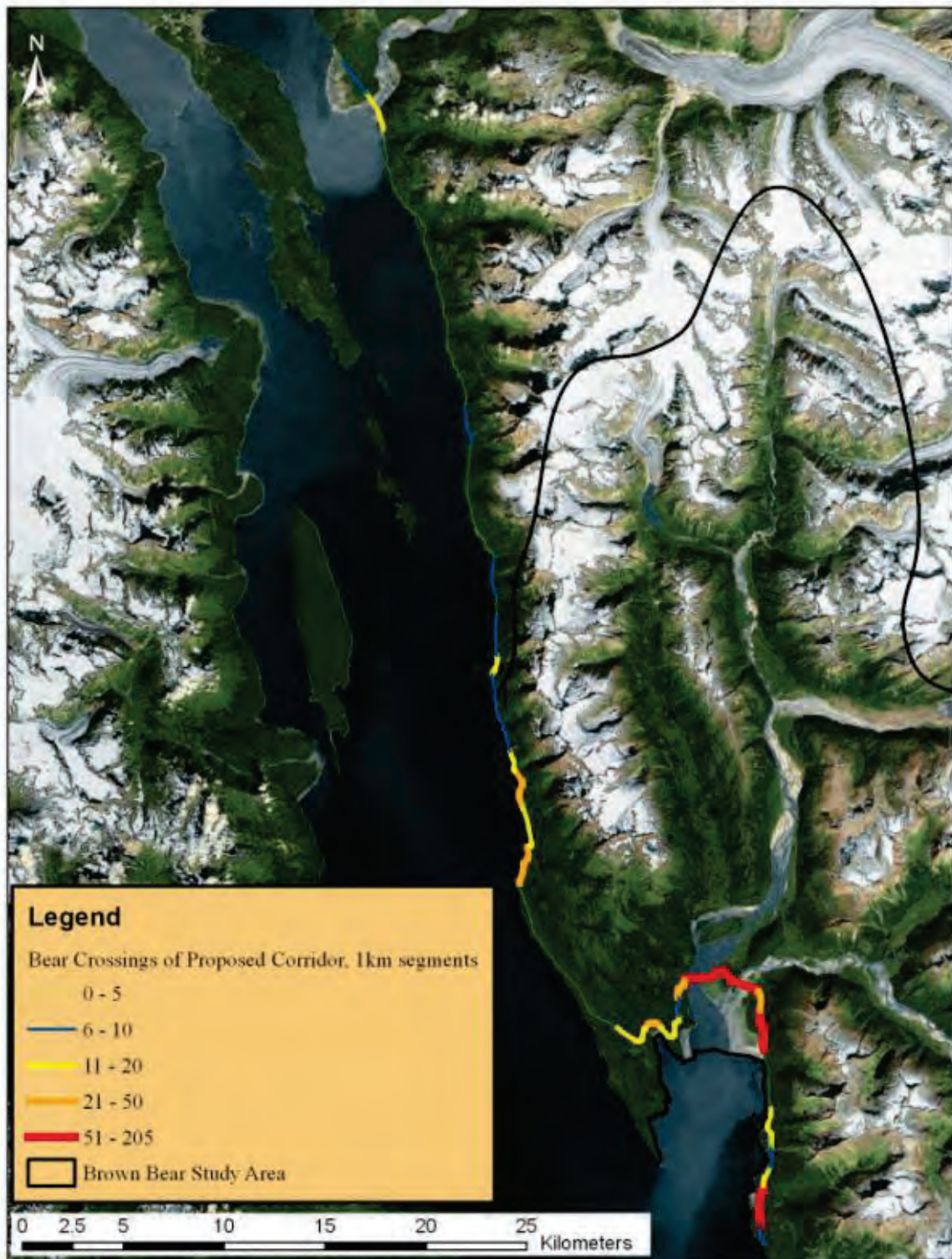


Figure B4. Frequency of brown bear movement paths crossing the proposed Juneau Access Improvements Project road corridor during 2006 to 2010.

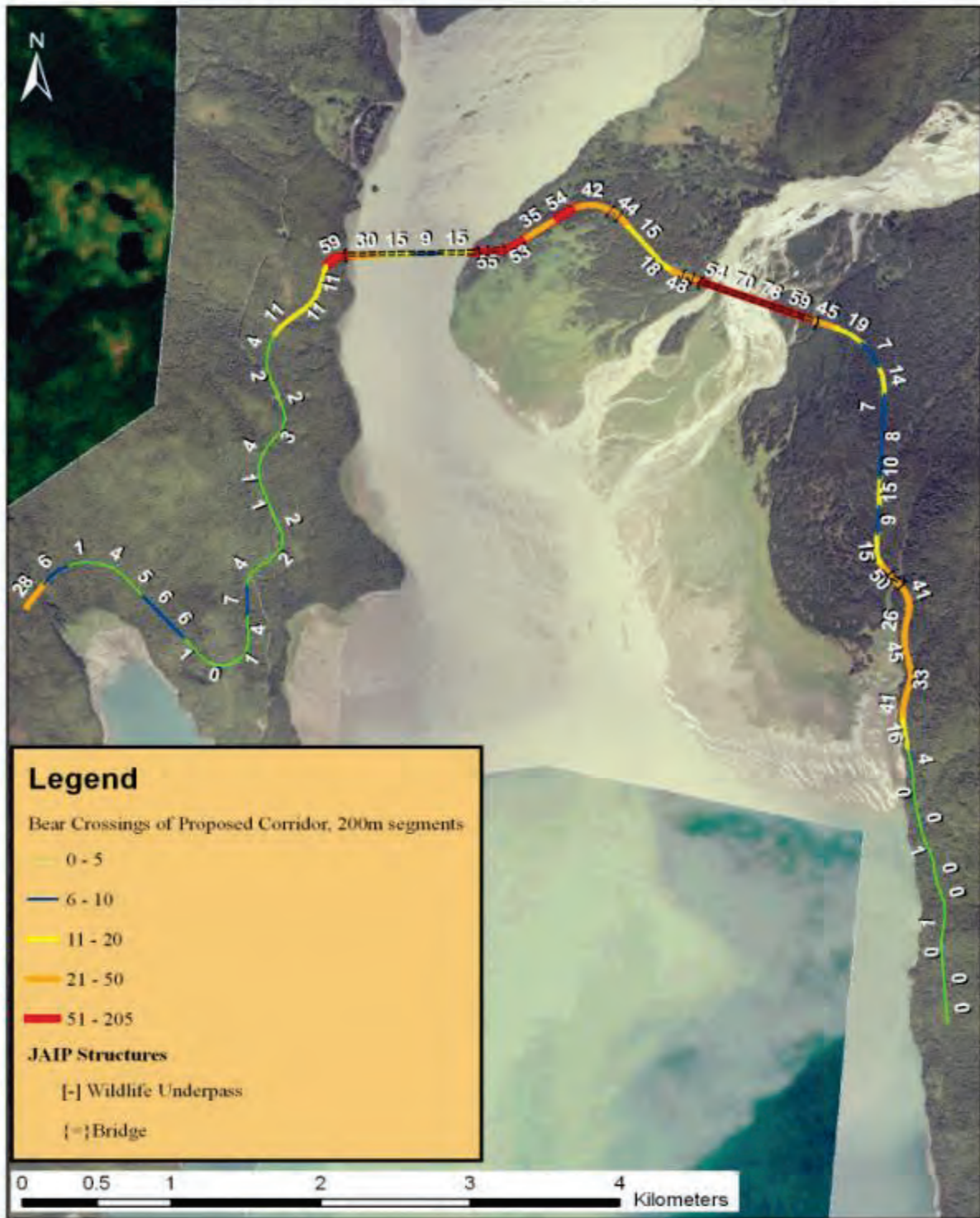


Figure B5. Frequency of brown bear movement paths crossing the proposed Juneau Access Improvements Project road corridor in and near the Berners Bay estuary during 2006 to 2010. The planned underpasses and the bridges are shown.

This page intentionally left blank.

Appendix C

Moose Maps

Selected from White et al. 2012a

This page intentionally left blank.



Figure C1: Location of moose captured and monitored in the Berners Bay study area, 2006-2011.

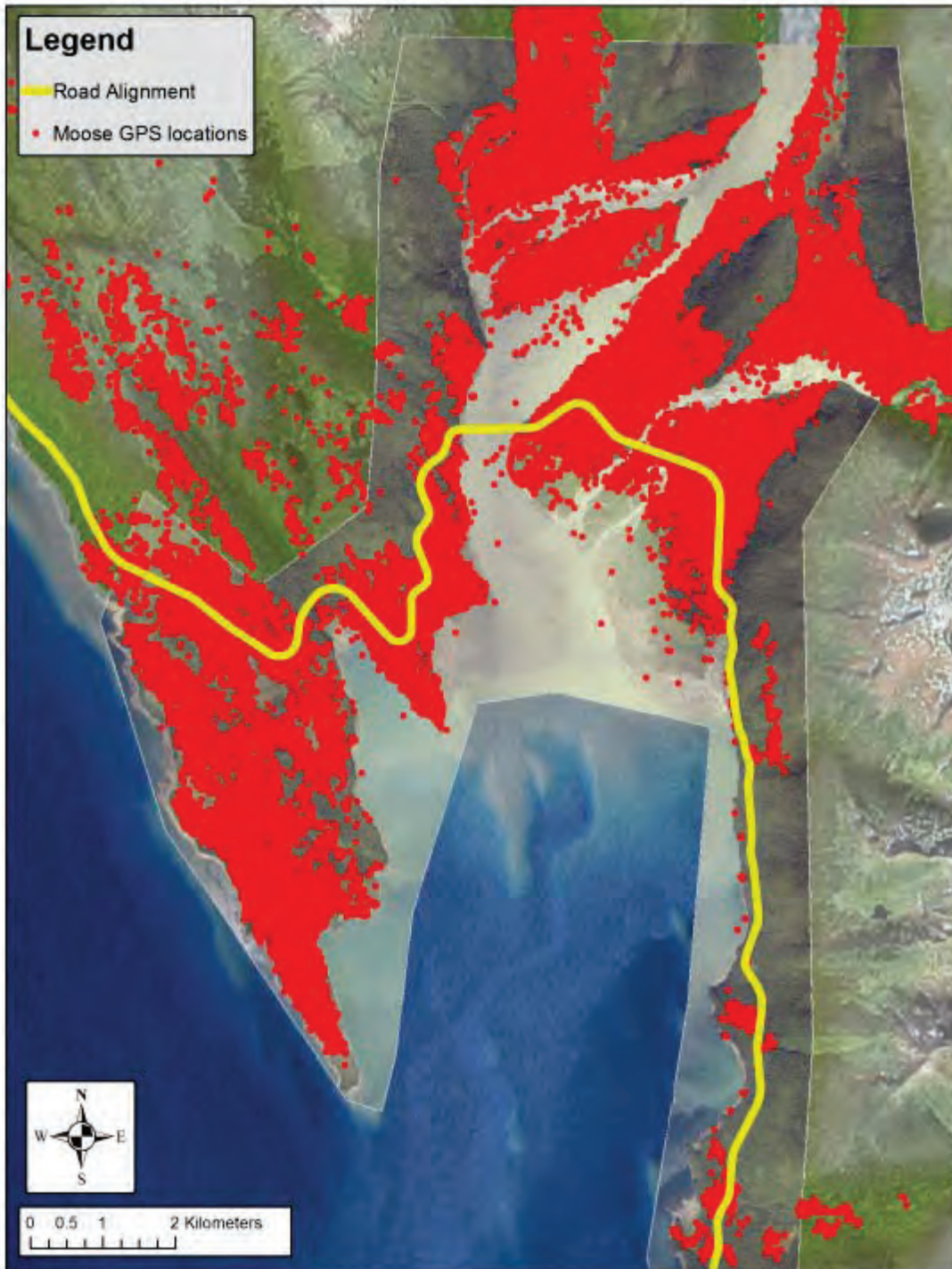


Figure C2: Map depicting all locations collected from GPS radio collared adult female moose in the lower Berners Bay area, 2006-2011

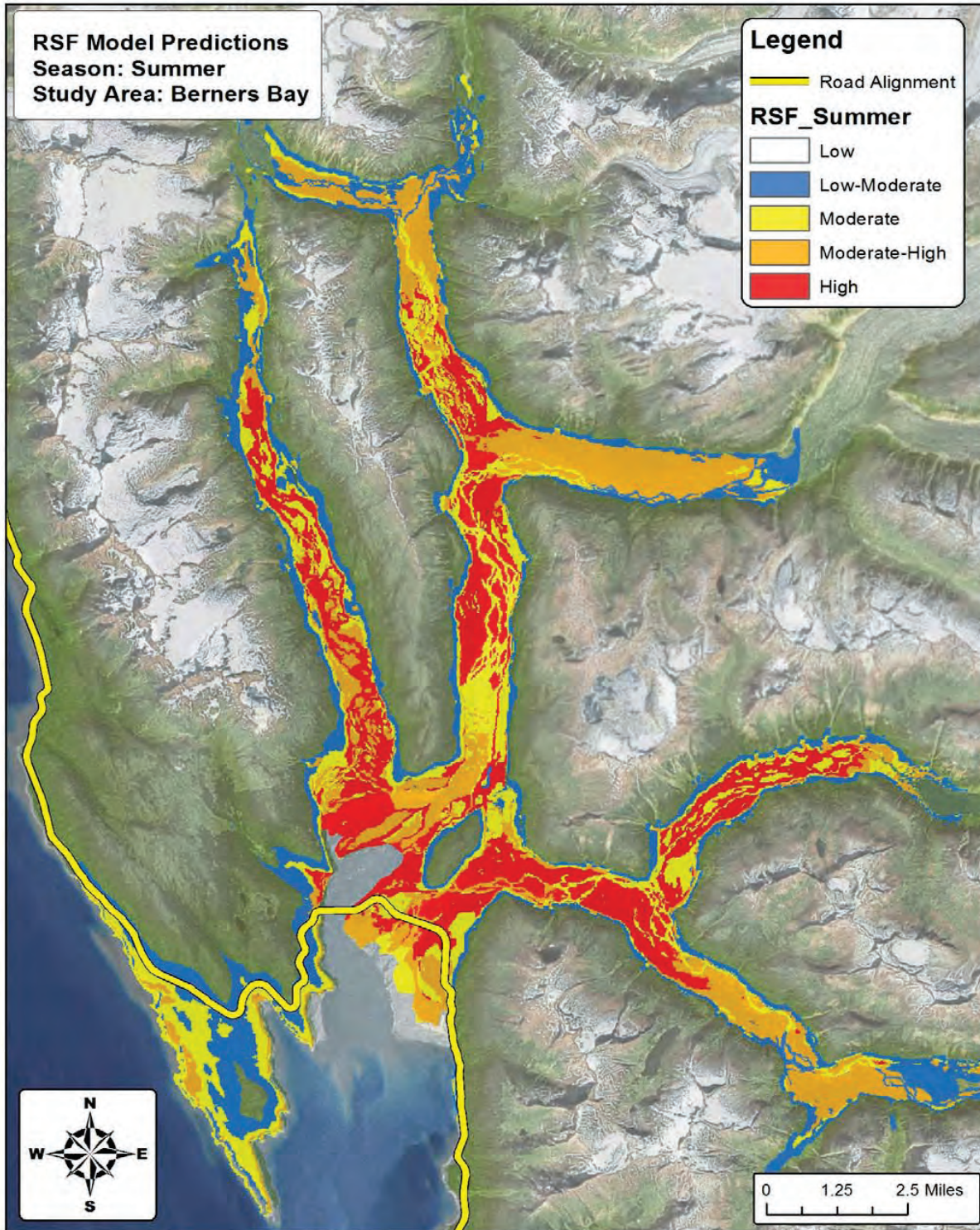


Figure C3: Map predicting relative probability of use for moose during summer in the Berners Bay study area, 2006-2011.

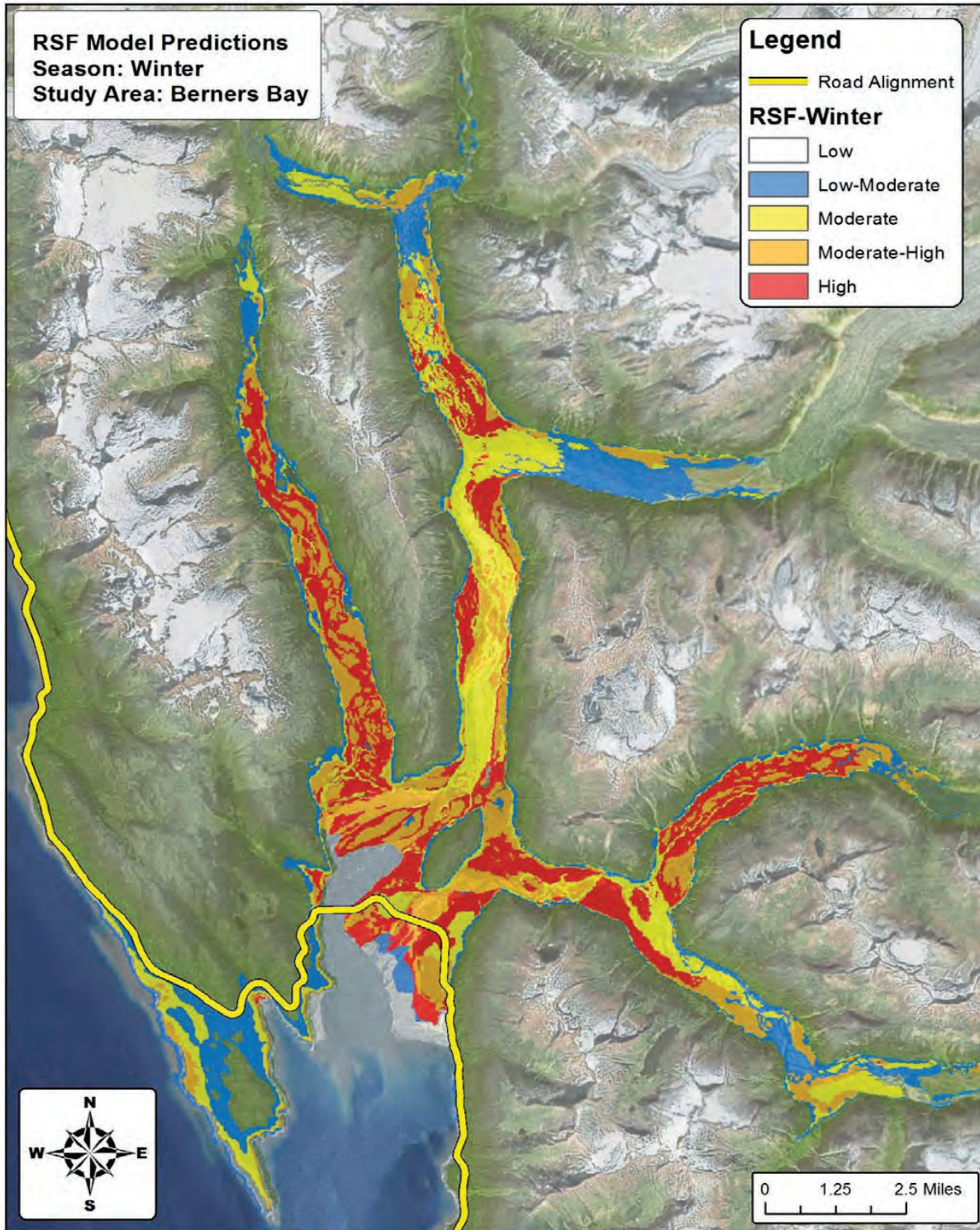


Figure C4: Map predicting relative probability of use for moose during winter in the Berners Bay study area, 2006-2011

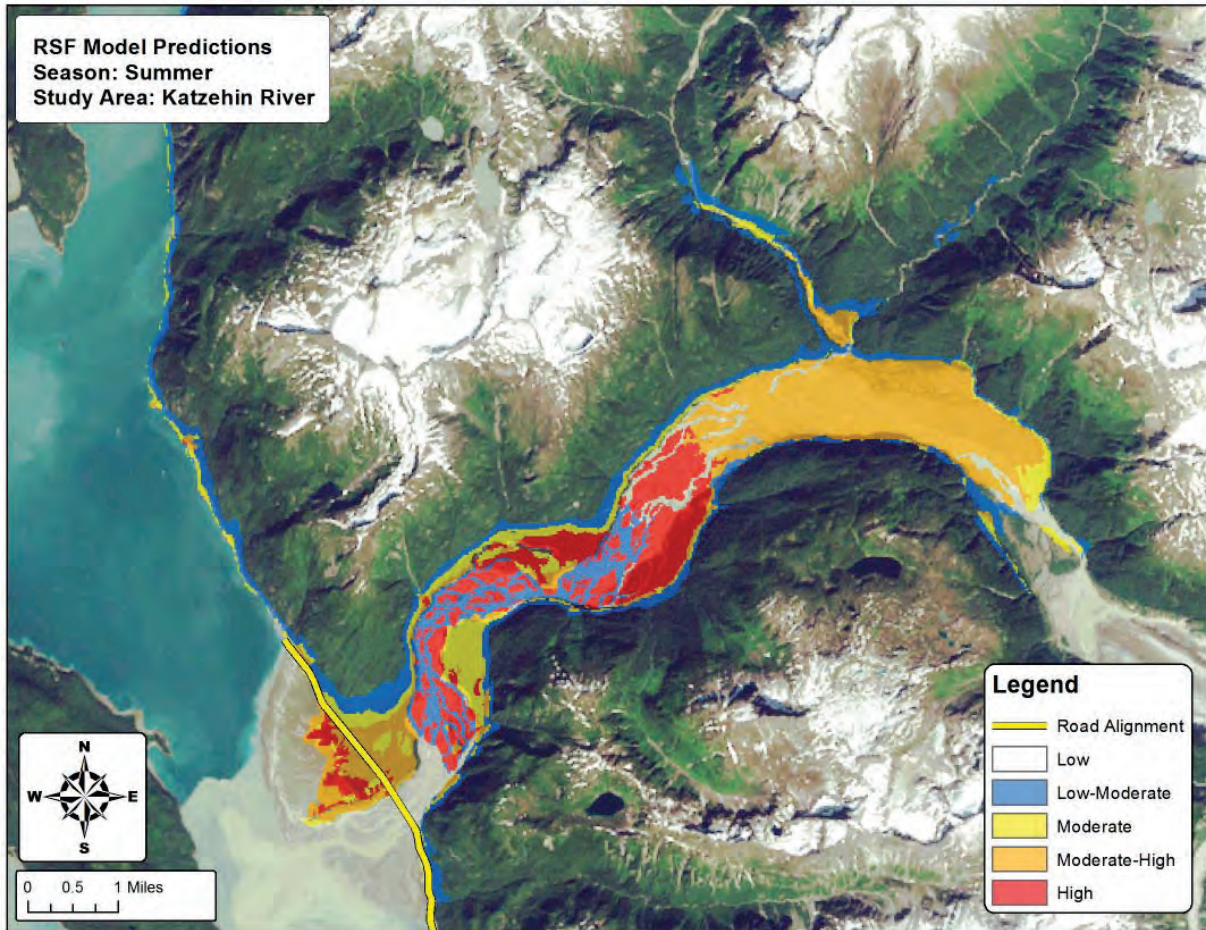


Figure C5: Map predicting relative probability of use for moose during summer in the Katchehin River area

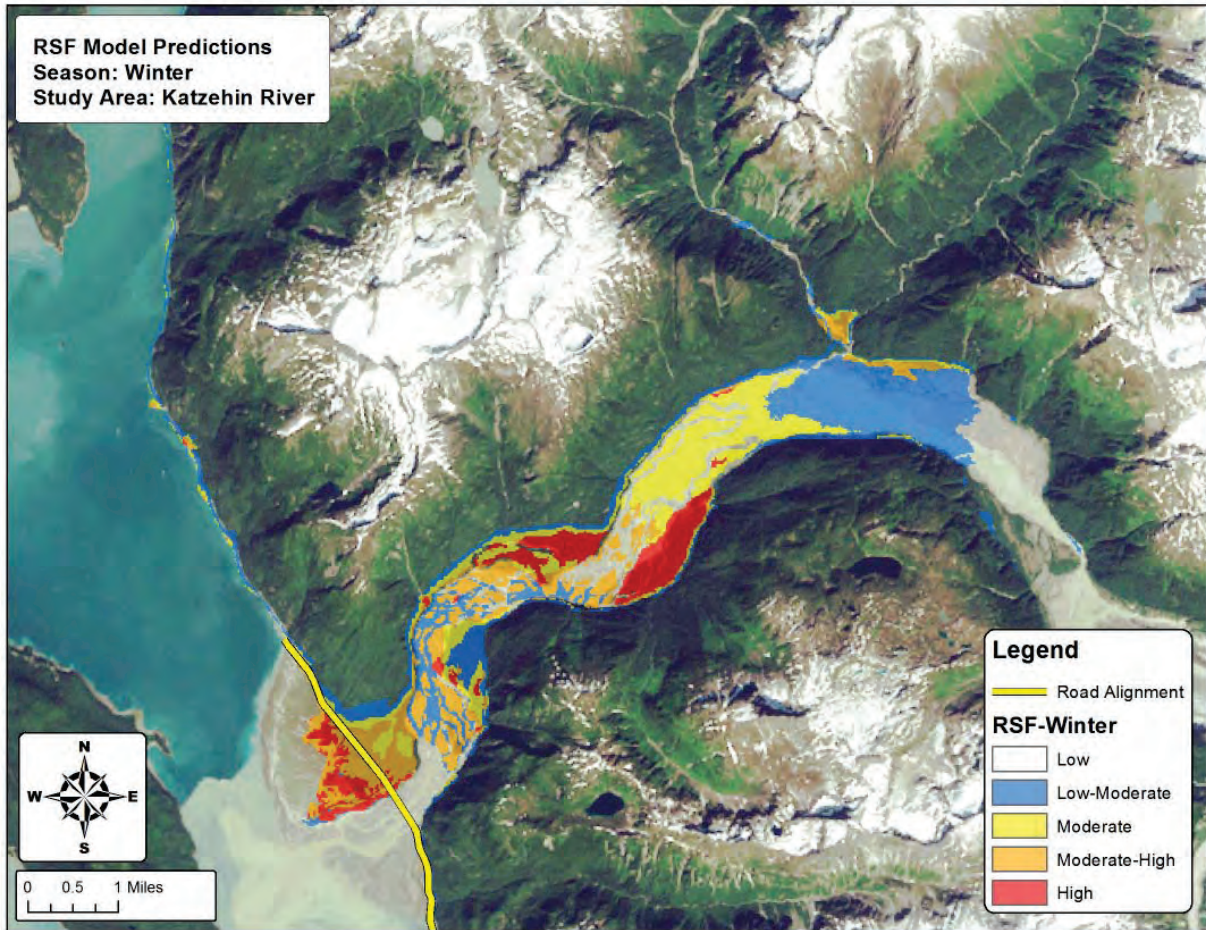


Figure C6: Map predicting relative probability of use for moose during winter in the Katzehin River area

Appendix D

Mountain Goat Maps

Selected from White et al. 2012b

This page intentionally left blank.

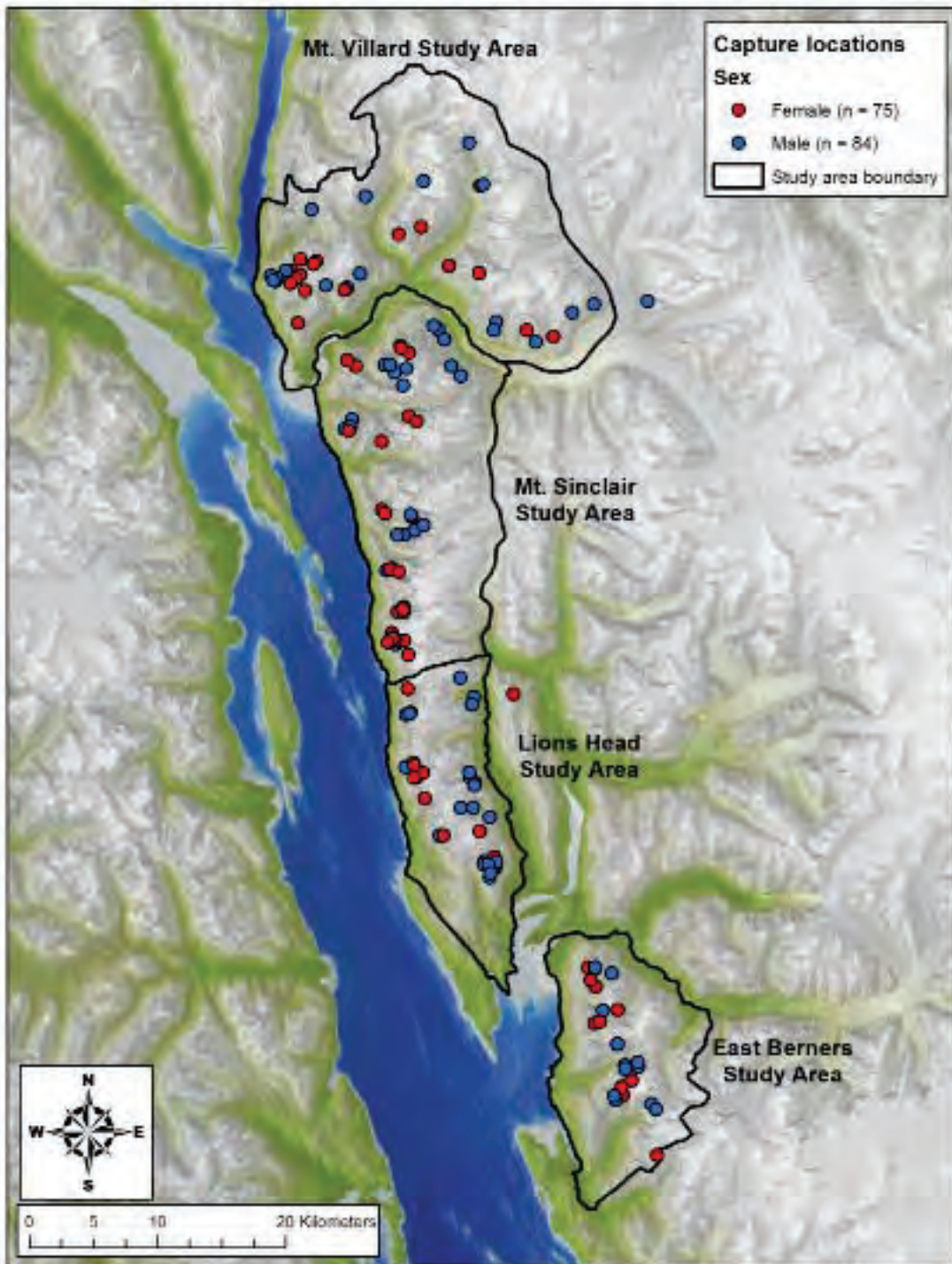


Figure D1: Locations of mountain goats captured and subsequently monitored in the Lynn Canal study area, 2005-2011

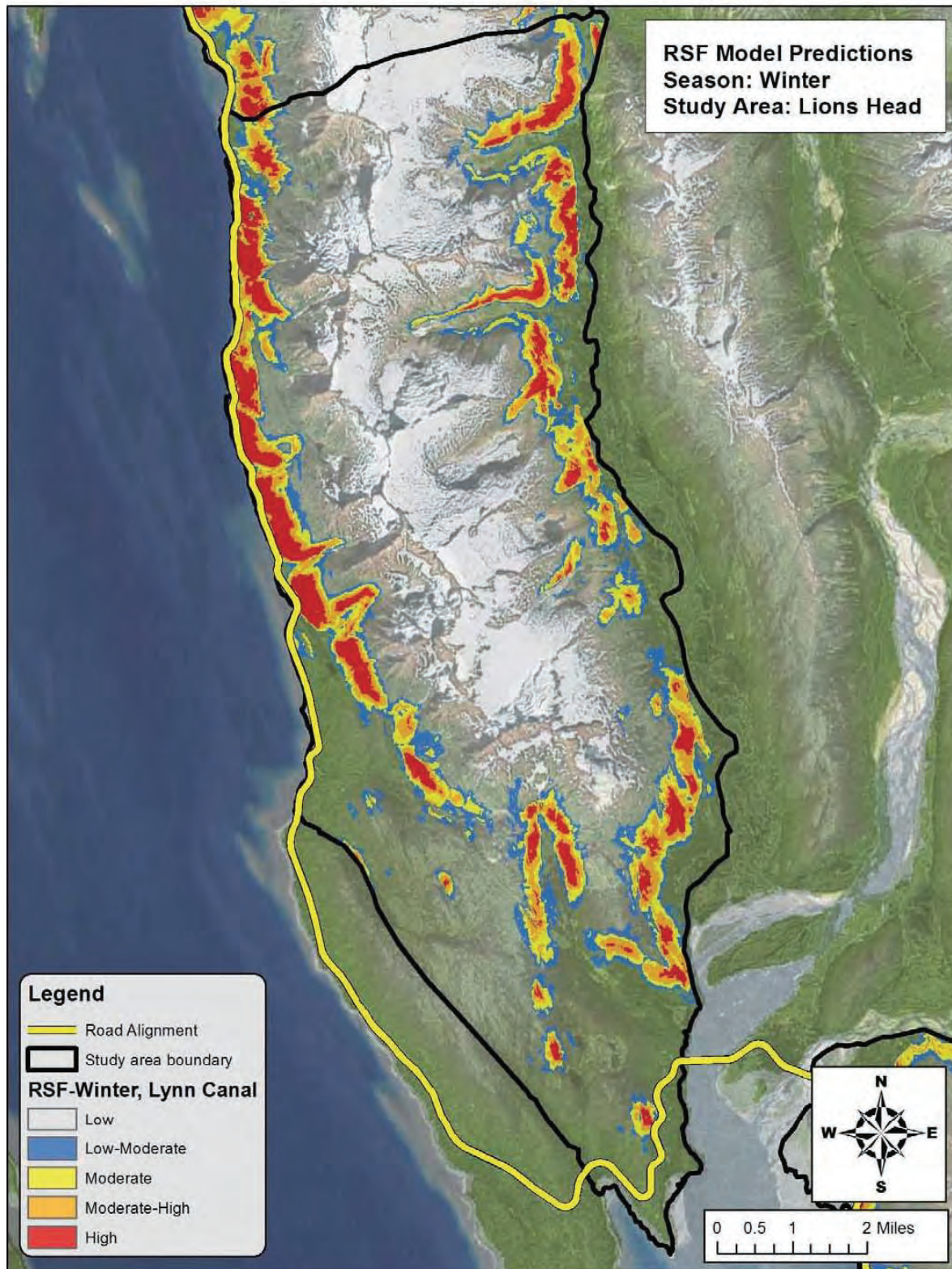


Figure D2: Map predicting relative probability of use for mountain goats during winter in the Lions Head study area

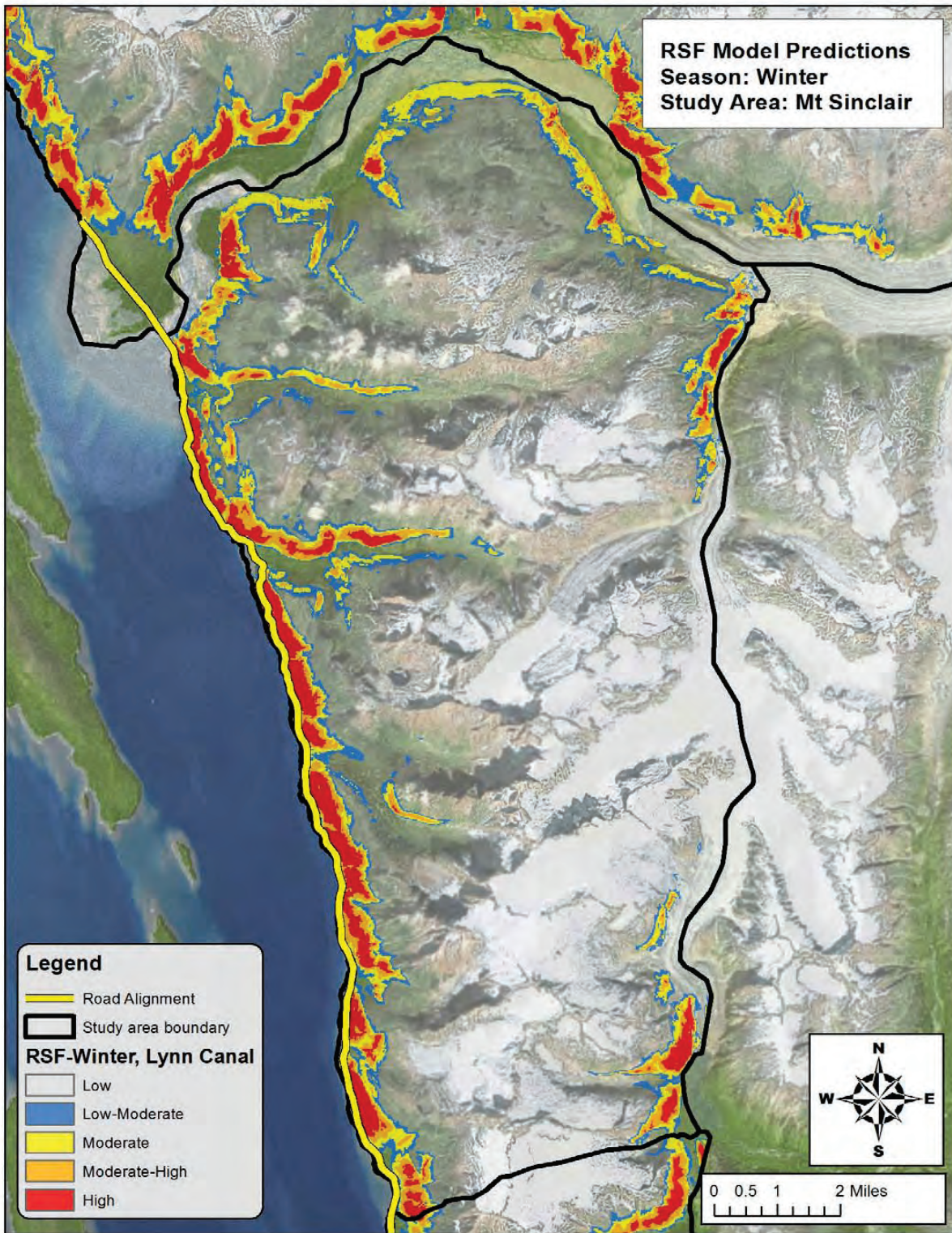


Figure D3: Map predicting relative probability of use for mountain goats during winter in the Mt. Sinclair study area

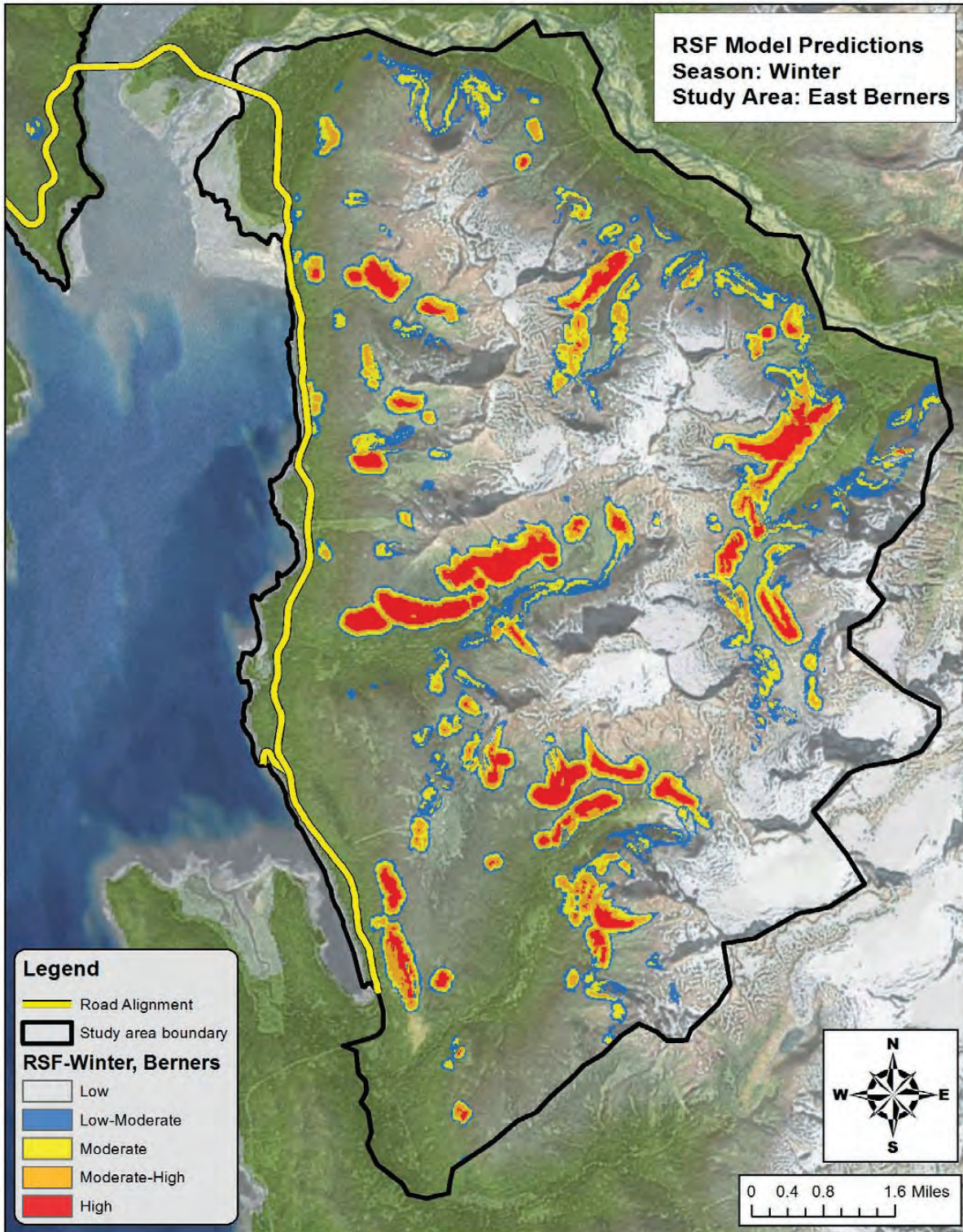


Figure D4: Map predicting relative probability of use for mountain goats during winter in the East Berners Bay study area

Appendix E

Wolverine Maps

Selected from Lewis et al. 2012

This page intentionally left blank.

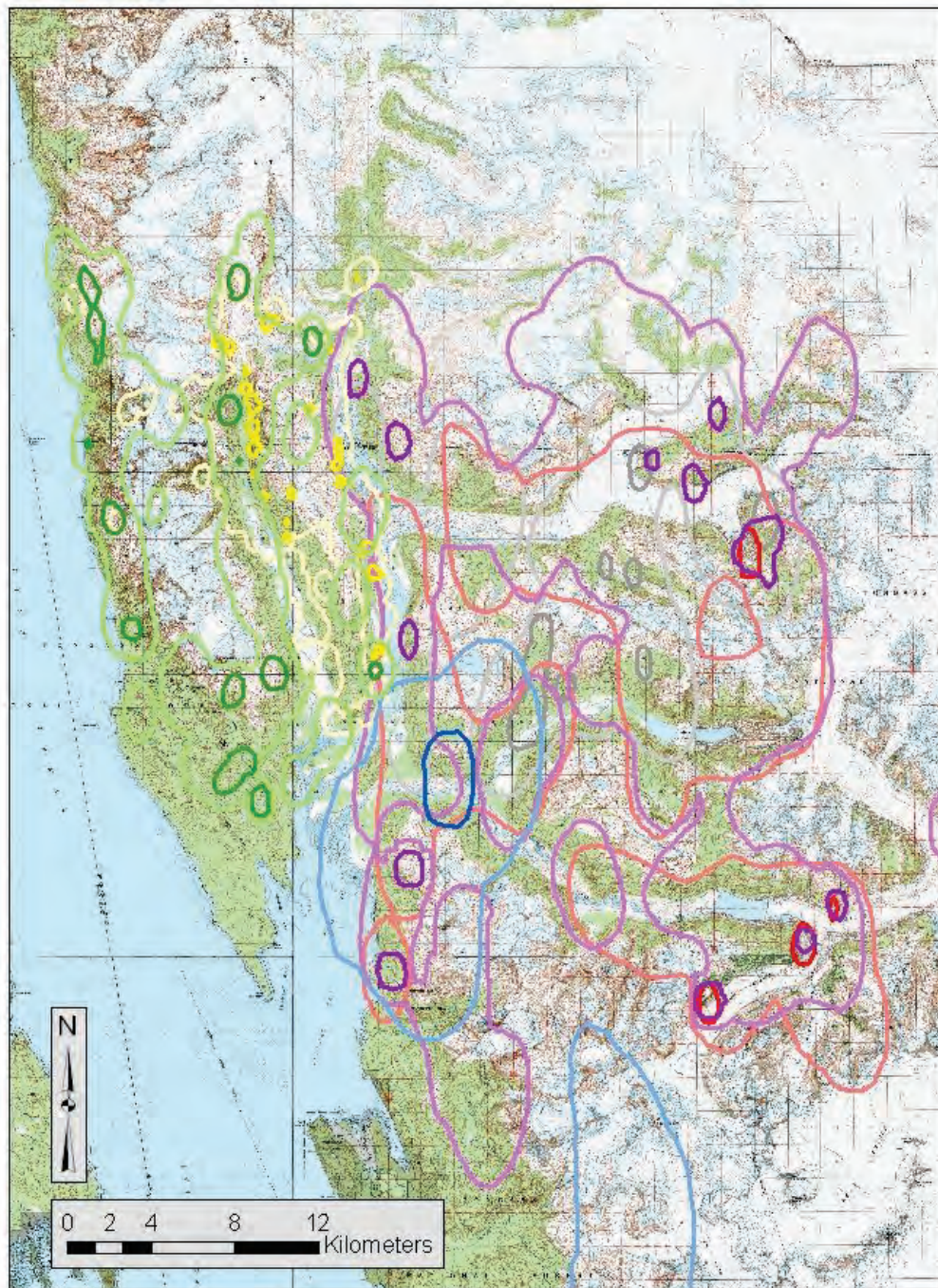


Figure E1. Use areas of 6 male wolverines in Berners Bay, Alaska. Colors indicate different animals: M1 = green; M2 = blue; M3 = yellow; M4 = purple; M5 = red; and, M7 = grey. Note, most of M2's use area is not shown as it is outside the Berners Bay study area.

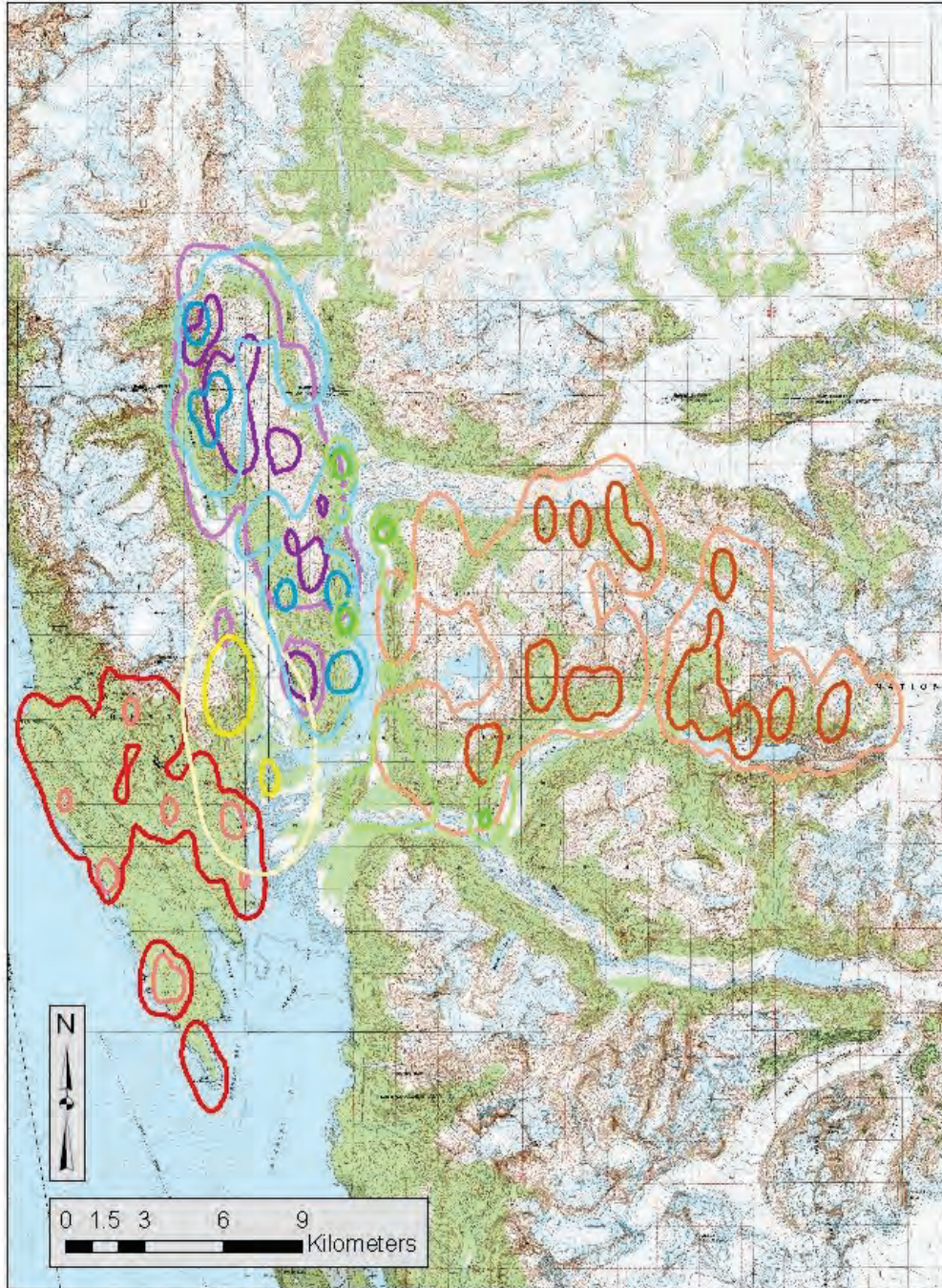


Figure E2. Use areas of 6 female wolverines in Berners Bay, Alaska. Colors indicate different animals: F1 = green; F2 = blue; F5 = yellow; F6 = purple; F7 = red; and, F8 = orange.