



Welcome

South Tongass Highway Rehabilitation Project Public Open House



Meeting Purpose



The purpose of tonight's Open House is to share information about the project's:

- Purpose
- Schedule
- Preliminary design
- Multi-use pathway and sidewalk improvements
- Next steps

Most importantly, this meeting provides you with an opportunity to speak with project team members. We welcome your questions and comments.

The Project



Purpose:

The Alaska Department of Transportation and Public Facilities (DOT&PF) has identified the need to resurface, restore, and rehabilitate a portion of the South Tongass Highway and related non-motorized facilities in order to improve operations and provide for the safe movement of vehicle, bicycle, and pedestrian traffic.



Description:

The South Tongass Highway Rehabilitation Project starts at the Deermount Street intersection and extends approximately 3 miles south to Surf Street.



This project would rehabilitate, and in some places widen, the roadway; remove or permit right-of-way encroachments; construct sidewalk improvements; reconstruct the bike and pedestrian pathway; extend the pathway through Saxman; and improve drainage.





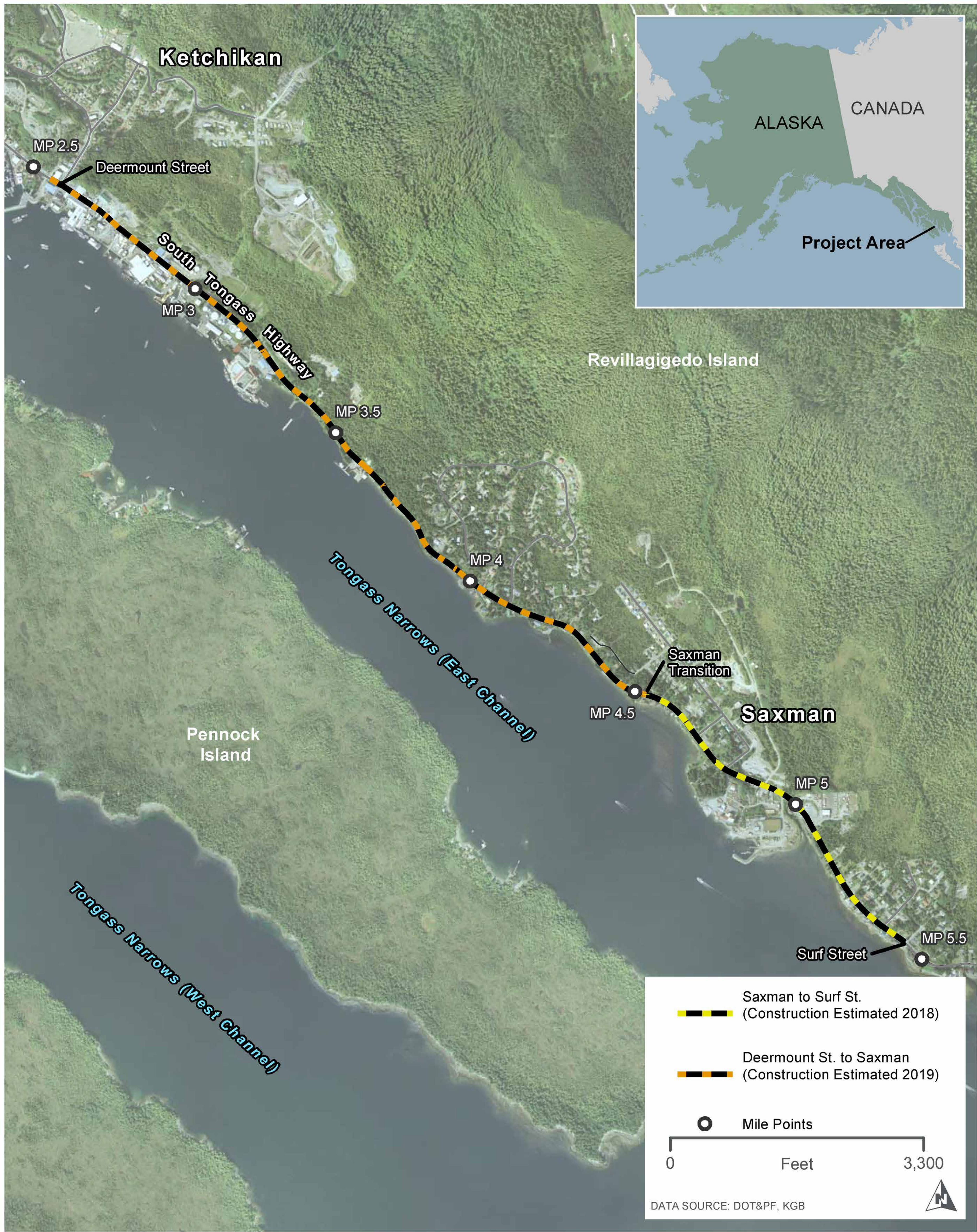
Environmental Review Process and Permitting

The project team is currently studying the human and natural environment in the project corridor. Surveys of fish and wildlife, plants, cultural and historic resources, and wetlands are being conducted. Potential impacts of the rehabilitation project on these resources and the local communities will be identified in an environmental document slated for completion this summer.

DOT&PF will obtain permits for changes to fish habitat, wetland fill, and bald eagle disturbance prior to construction.



Project Area Map



SOUTH TONGASS HIGHWAY REHABILITATION PROJECT AREA

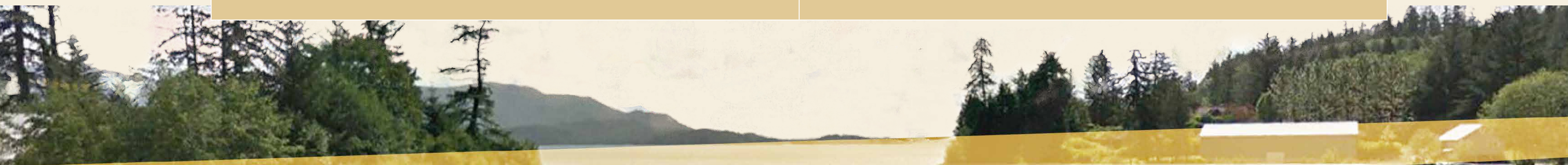
FIGURE 1

PATH: \\ANG-SRV04\PROJECT_SAN\0702 DOT&PF\267931 S. TONGASS DEERMONT NTP 2\MAP_DOCS\PI\FIG1_PROJECTAREAMAP.MXD - USER: TLILLY - DATE: 05/02/2016 SOUTH TONGASS HIGHWAY REHABILITATION PROJECTS

Key Design Elements



Design Element	Benefit
<ul style="list-style-type: none"> - Re-alignment or straightening of the roadway - Cutting back adjacent rock slopes - Construction of earth walls or other wall structures as appropriate to accommodate area topography 	<ul style="list-style-type: none"> - Improved sight distances (can reduce the number of vehicular accidents) - Address over-steep rock slopes adjacent to the roadway (such conditions have contributed to recent rock slides on other sections of South Tongass Highway)
<ul style="list-style-type: none"> - Resurfacing and widening (in some locations) the roadway - Rock excavation to accommodate realignment and/or widening where necessary, and to improve the condition of rock slopes 	<ul style="list-style-type: none"> - Extend design life of road - Reduce water and ice entrapment in wheel ruts - Reduce maintenance costs by facilitating snow removal and reducing the potential for rock fall into ditches or onto the roadway
<ul style="list-style-type: none"> - Recondition ditches currently overgrown with vegetation - Replace aging culverts under intersecting roadways and driveways - Drainage improvements including culvert replacement and ditching 	<ul style="list-style-type: none"> - Allow for proper drainage - Reduce roadway icing - In some locations, box culverts will be replaced with culverts designed to better accommodate fish passage
<ul style="list-style-type: none"> - Bus stops and shelters may be constructed at locations to be determined in coordination with the KGB Transit Manager and the City of Saxman - The existing bike/pedestrian pathway will be brought to current standards, and the pathway will be extended through Saxman 	<ul style="list-style-type: none"> - Improve transit and non-motorized connectivity

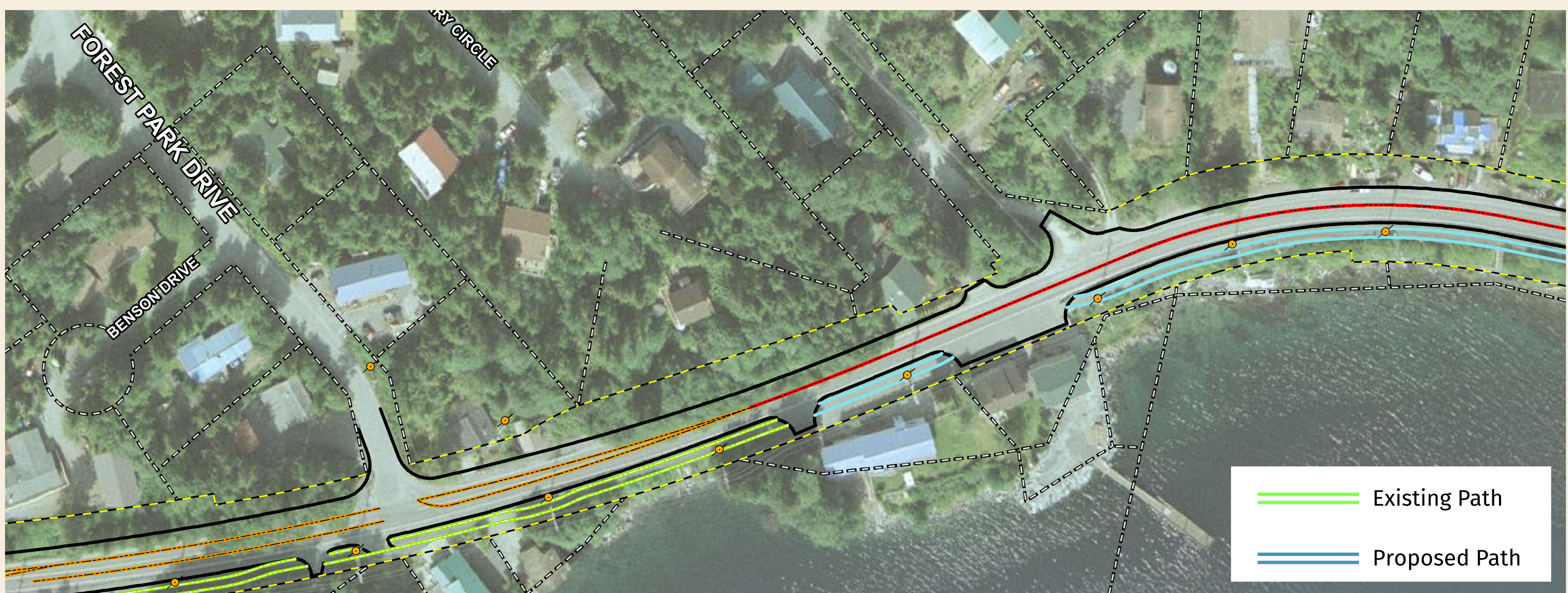




Bike/Pedestrian Pathway and Sidewalk

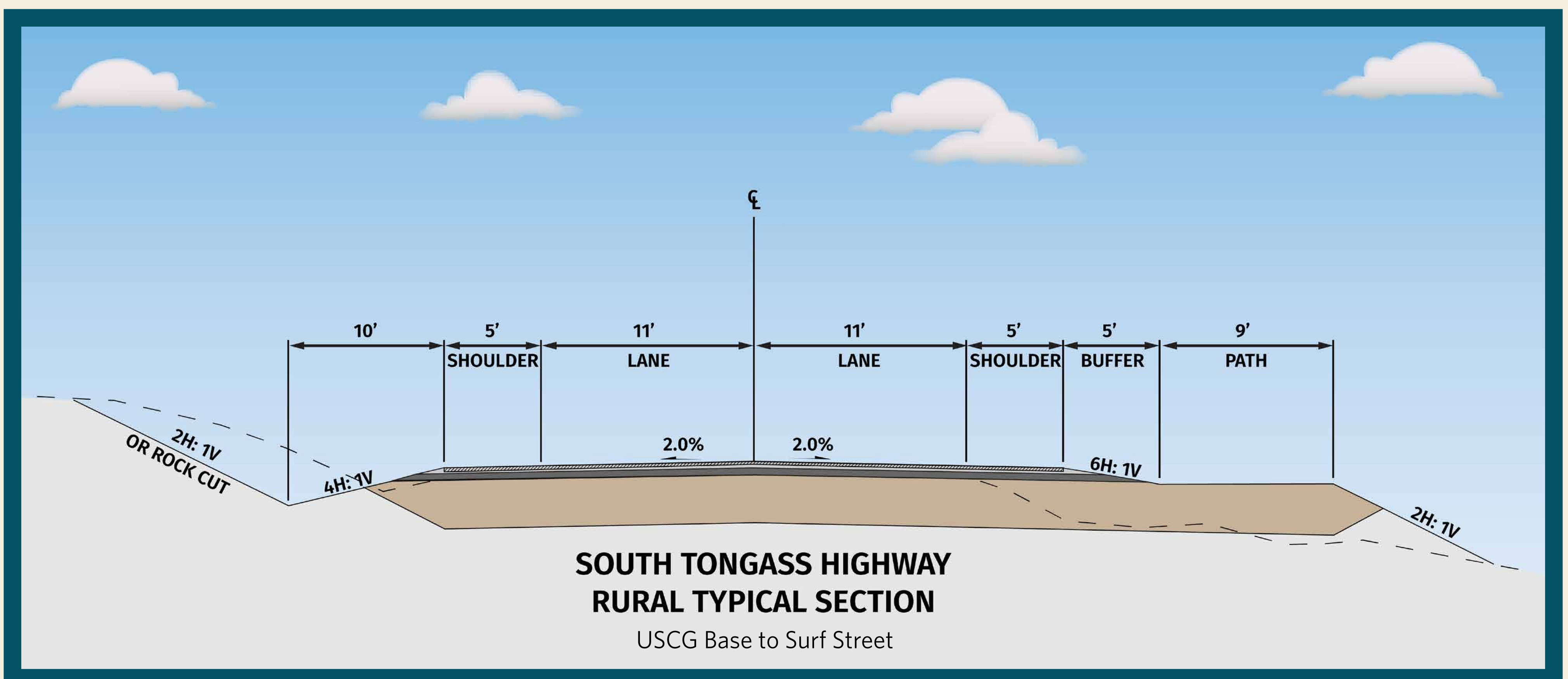
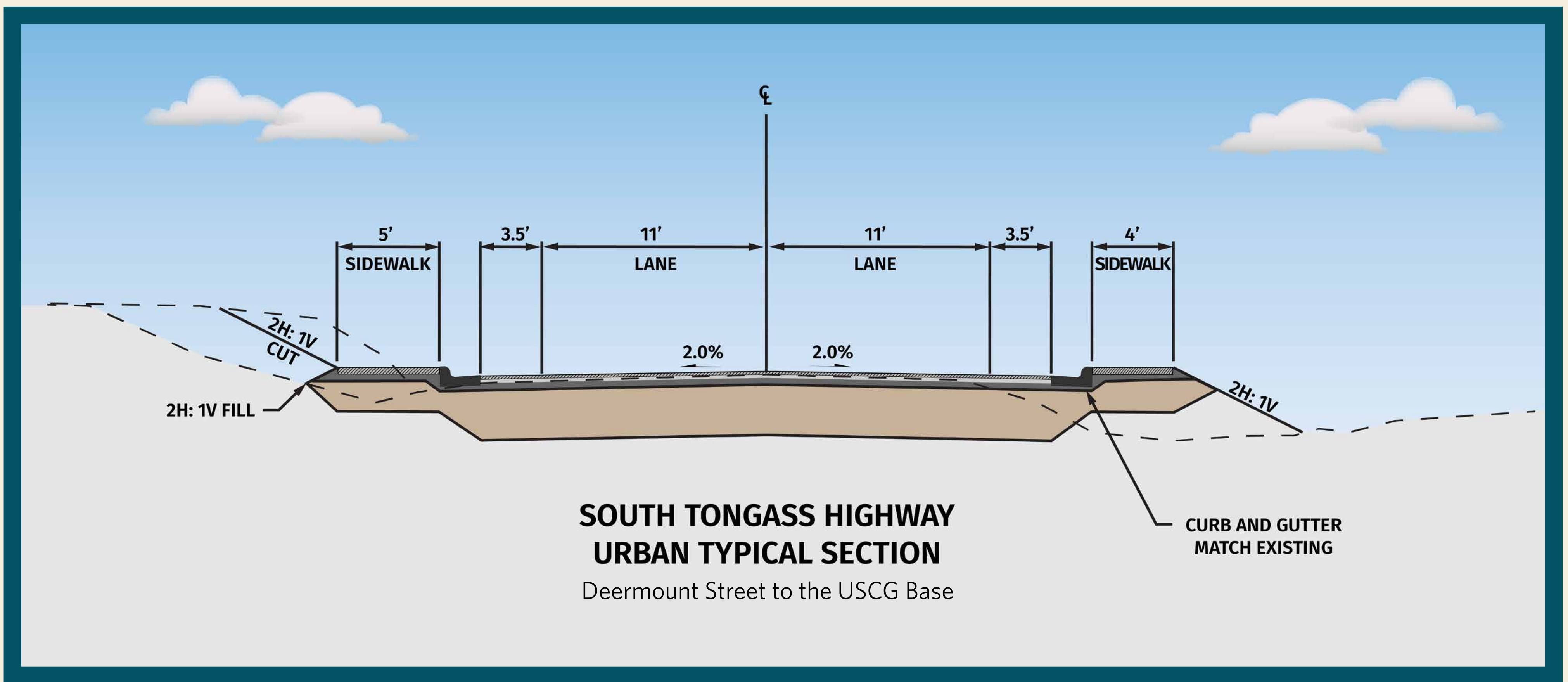
As a part of this highway project, the bike/pedestrian pathway adjacent to the highway will be upgraded to current ADA¹ standards. Also, new sections of pathway will be constructed between Saxman and Surf Street so that the pathway is continuous through the project corridor.

An additional new sidewalk east (land side) of the highway is proposed from Deermount Street to the north entrance of the USCG base.

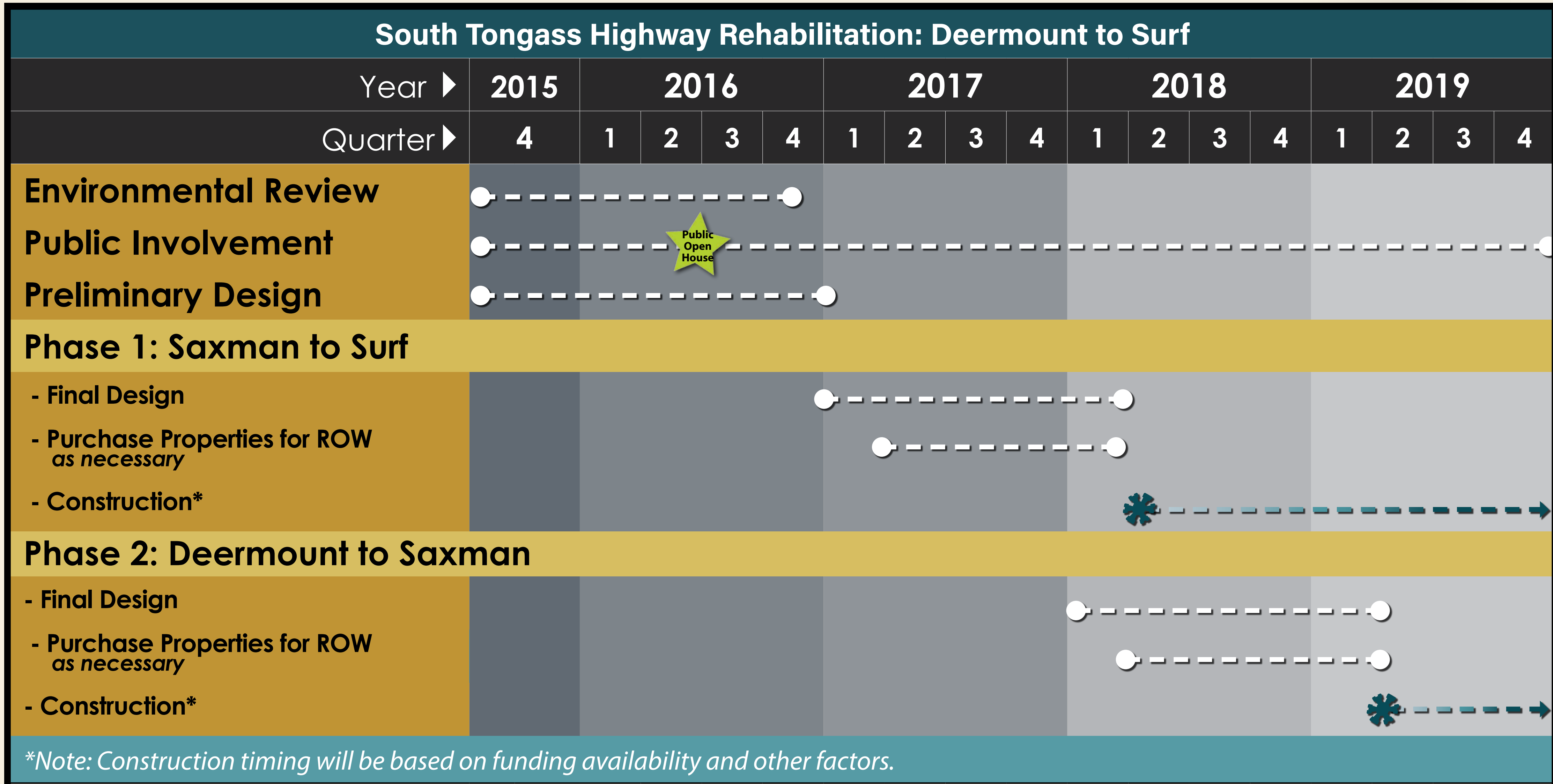


¹ ADA - Americans with Disabilities Act - <http://www.ada.gov>

Typical Cross Sections



Schedule and Next Steps



Next Steps:

- DOT&PF will consider your input as it completes the project's environmental review process and advances the project design.
- Once the design is 75% complete, DOT&PF will determine its needs for property acquisition and coordinate with affected land owners for right-of-way.

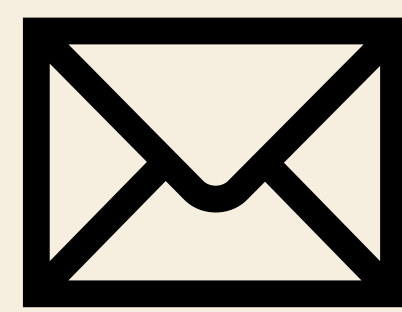


Comments



We want to hear from you!

Please fill out a comment form, or
send comments via email to



info@southtongasshighway.com

Need more project information?
Visit the project website!



www.southtongasshighway.com

