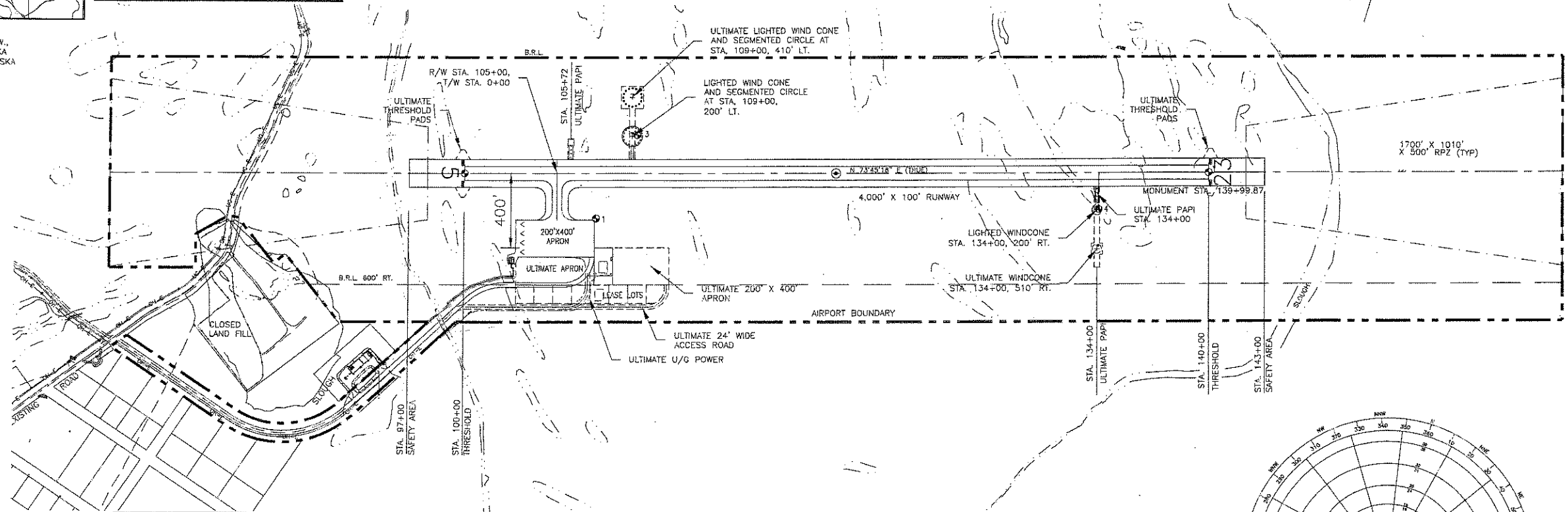
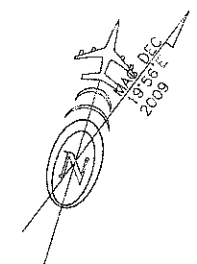


VICINITY MAP
 SEC. 15, T. 20 N., R. 24 W.,
 FAIRBANKS MERIDIAN, ALASKA
 U.S.G.S. BETTLES (C-6) ALASKA



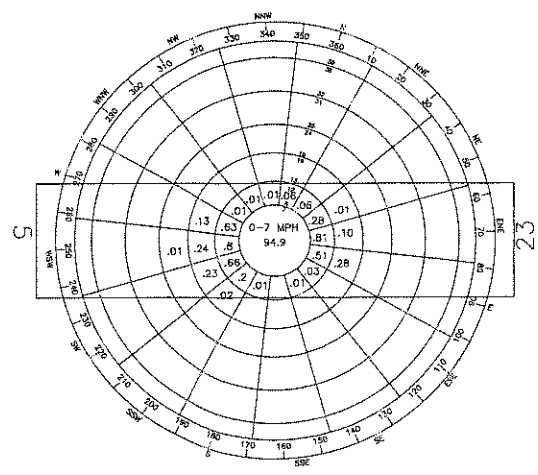
RUNWAY DATA		
	EXISTING	ULTIMATE
RUNWAY 5-23		
INSTRUMENT RUNWAY	NON-PRECISION	SAME
% WIND COVERAGE	99.8% @ 12 MPH	SAME
RUNWAY SURFACE TYPE	GRAVEL	SAME
PAVEMENT STRENGTH	N/A	SAME
APPROACH SURFACES	34:1	SAME
APPROACH VISIBILITY MINIMUMS	>1 MILE	SAME
RUNWAY LIGHTING	MIRL	SAME
RUNWAY MARKING	NONE	SAME
VISUAL APPROACH AIDS	NONE	PAPI REL.
R/W DIMENSIONS	100' X 4000'	SAME
R/W SAFETY AREA (RSA)	150' X 4600'	SAME
R/W OBJECT FREE AREA (ROFA)	500' X 4600'	SAME
R/W OBSTACLE FREE ZONE (ROFZ)	400' X 4400'	SAME
R/W PROTECTION ZONE (RPZ)	1700' X 1010' X 500'	SAME
T/W WIDTH	50'	SAME
T/W SAFETY AREA WIDTH	120'	SAME
T/W OFA	186'	SAME
R/W 5 TOUCHDOWN ZONE ELEV.	437.5'	437.9'
R/W 23 TOUCHDOWN ZONE ELEV.	440.6'	440.9'

AIRPORT SURVEY CONTROL						
POINT	NAD 83 LATITUDE (N)	LONGITUDE (W)	NORTHING	EASTING	NAVD88 ELEVATION	DESCRIPTION
53	66°33'01.090"	152°38'07.224"	4589284.62	1839281.05		100+00 ALUM CAP CL MONUMENT
54	66°33'12.100"	152°36'32.368"	4590467.92	1843095.31		140+00 ALUM CAP CL MONUMENT *
1	66°33'00.754"	152°37'48.747"	4589246.65	1840029.65	434.18(F)	BRASS CAP MONUMENT AET 1
3	66°33'05.807"	152°37'48.624"	4589741.81	1840104.75	433.85(F)	BRASS CAP MONUMENT AET A
4	66°33'08.627"	152°36'44.991"	4590103.67	1842592.31	438.51(F)	BRASS CAP MONUMENT AET B

AIRPORT DATA			
	EXISTING	ULTIMATE	
NATIONAL AIRPORT IDENTIFIER	648		
AIRPORT ELEVATION (NAVD 88)	440.6'	SAME	
AIRPORT REFERENCE CODE	BR	SAME	
MEAN DAILY MAX. TEMP., HOTTEST MONTH (JULY)	68.8°F	SAME	
TAXIWAY LIGHTING	MIL	SAME	
RAMP LIGHTING	NONE	SAME	
NAVIGATION AIDS	BEACON	AWOS	
COMMUNICATION AIDS	NONE	SAME	
AIRPORT REFERENCE POINT (ARP)	LAT. 66°33'06.5"N LONG. 152°37'19.8"W		
THRESHOLD 5 STA. 100+00	LAT. 66°33'01.08"N LONG. 152°38'07.22"W	SAME	
THRESHOLD 23 STA. 140+00	LAT. 66°33'12.10"N LONG. 152°36'32.36"W	SAME	

LEGEND		
	EXISTING	ULTIMATE
PROPERTY LINE	---	---
BUILDING RESTRICTION LINE (B.R.L.)	---	---
DEVELOPMENT	---	---
WIND CONE & SEGMENTED CIRCLE	---	---
WIND CONE ONLY	---	---
BUILDING	---	---
ROADWAY	---	---
FENCING	---	---
AIRPORT REFERENCE POINT	○	○
ROTATING BEACON	○	○
ANTENNA/TOWER	○	○
PAPI	---	---
SHORELINE/WATERLINE	---	---
TREELINE	---	---
THRESHOLD	---	---
UNDERGROUND POWER	---	---

- NOTES**
- NO OFZ OBJECT PENETRATIONS.
 - NO THRESHOLD SITING SURFACE OBJECT PENETRATIONS.
 - THE GEODETHIC COORDINATES FOR RUNWAY 5/23 WERE DERIVED FROM CONTROLLED GPS WORK COMPLETED BY R&M, INC. IN JULY OF 2006 WHICH HELD THE NAD83 (EPOCH 2003) COORDINATES OF CORS STATIONS TALLEKETA, GILMORE CREEK AND CENTRAL.
 - THE NAD83 ALASKA STATE PLANE ZONE 5 TRUE BEARING OF RUNWAY 5/23 IS 72°25'28" E
 - DISTANCES ARE HORIZONTAL GROUND DISTANCES IN US SURVEY FEET.
 - THE BASIS OF ELEVATION IS THE NAVD88 ELEVATION ESTABLISHED DURING THE ABOVE NOTED GPS SURVEY WHICH INCORPORATED GEOID 99 IN THE FINAL ADJUSTMENT.
 - MONUMENT AT STA. 139+99.87



WIND ROSE
 12 MPH
 PERCENT WIND COVERAGE: 99.9%
 WIND DATA PERIOD:
 DEC 16, 1989 TO DEC 30, 1991
 CLIMATE CENTER ENRI
 UNIVERSITY OF ALASKA

1:00 Addition & Community Rds & Buildings/Allakaket/0 General/12 ALP File/2009- ALP 2009 ALP.dwg

DESIGN_TDH	
DRAWN_TDH	2/27/09 FAA APPROVED
CHECKED_CML	10/18/01 FAA APPROVED
	6/14/01 AS-BUILT
BY	DATE REVISIONS

STATE OF ALASKA
 DEPARTMENT OF TRANSPORTATION AND PUBLIC FACILITIES
 NORTHERN REGION--DESIGN AND CONSTRUCTION--AVIATION

APPROVED
Cindie Little
 CINDIE LITTLE, P.E.

DATE 3/13/09
 DESIGN GROUP CHIEF

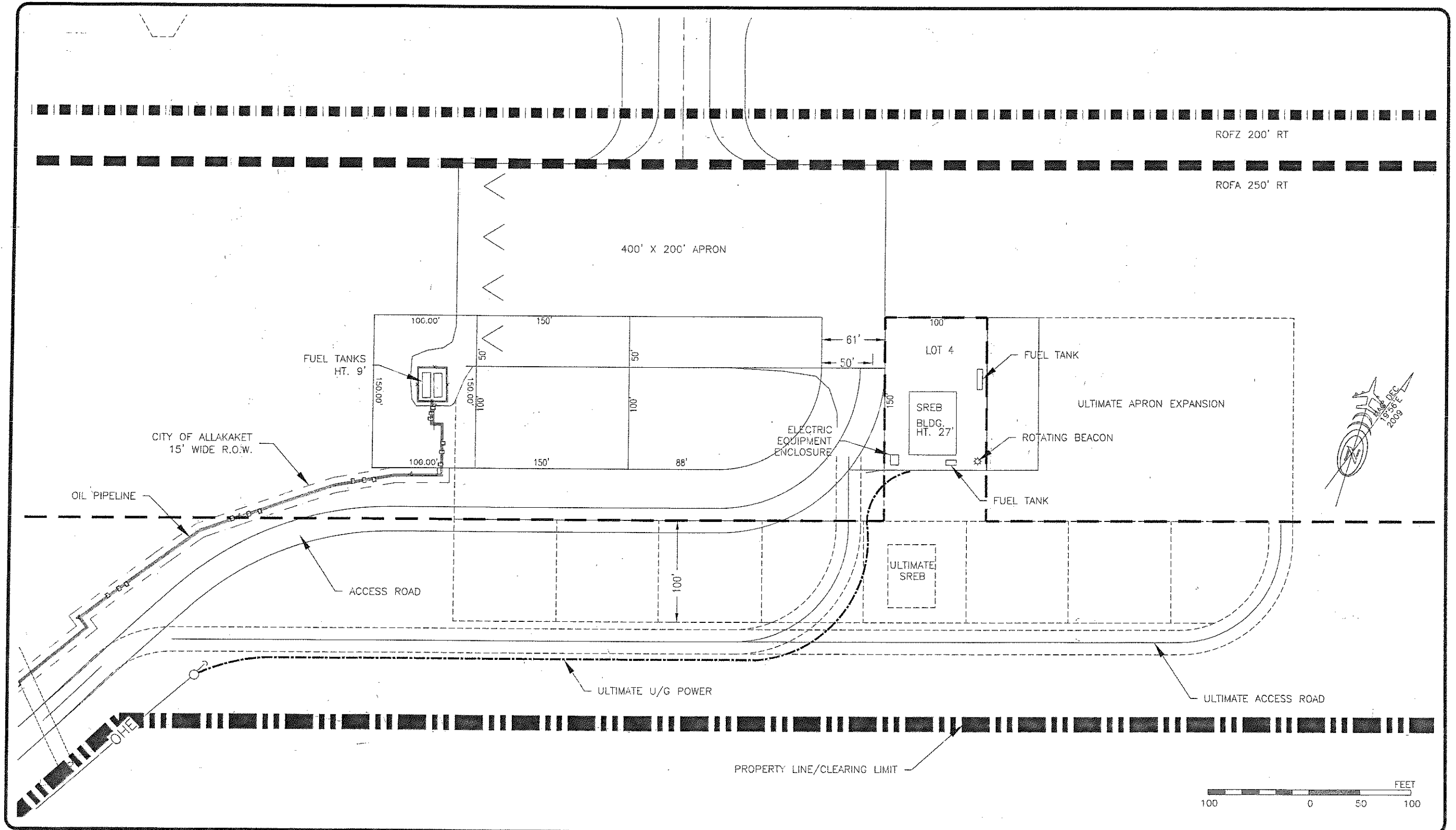
REVISED AIRPORT LAYOUT PLAN APPROVED
 BY LETTER DATED: 3/13/09

[Signature]
 AIRPORTS DIVISION,
 ALASKAN REGION, AAL-601
 AIRSPACE REVIEW #97AAL-047NRA

THIS ALP WAS PREPARED FOR THE UPCOMING PROJECT
 DATED 2009 AIR 3-02-0009-04/62595

ALLAKAKET AIRPORT
 AIRPORT LAYOUT PLAN

SHEET
 1
 OF
 4



DESIGN_IDH	
DRAWN_IDH	
CHECKED_CML	

BY	DATE	REVISIONS
	2/27/09	FAA APPROVED
	10/18/01	FAA APPROVED
	6/14/01	AS-BUILT

STATE OF ALASKA
 DEPARTMENT OF TRANSPORTATION AND PUBLIC FACILITIES
 NORTHERN REGION-DESIGN AND CONSTRUCTION-AVIATION

APPROVED
Cindie Little
 CINDIE LITTLE, P.E.

DATE 3/13/09
 DESIGN GROUP CHIEF

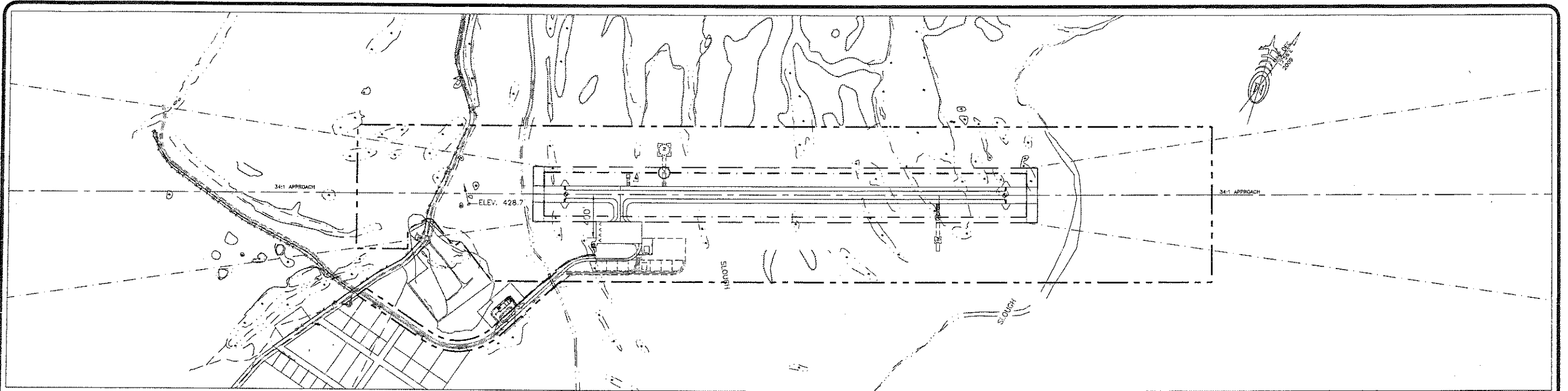
REVISED AIRPORT LAYOUT PLAN APPROVED
 BY LETTER DATED: 3/16/09
[Signature]

AIRPORTS DIVISION,
 ALASKAN REGION, AAL-601
 AIRSPACE REVIEW #97AAL-047NRA



ALLAKAKET AIRPORT
 TERMINAL PLAN

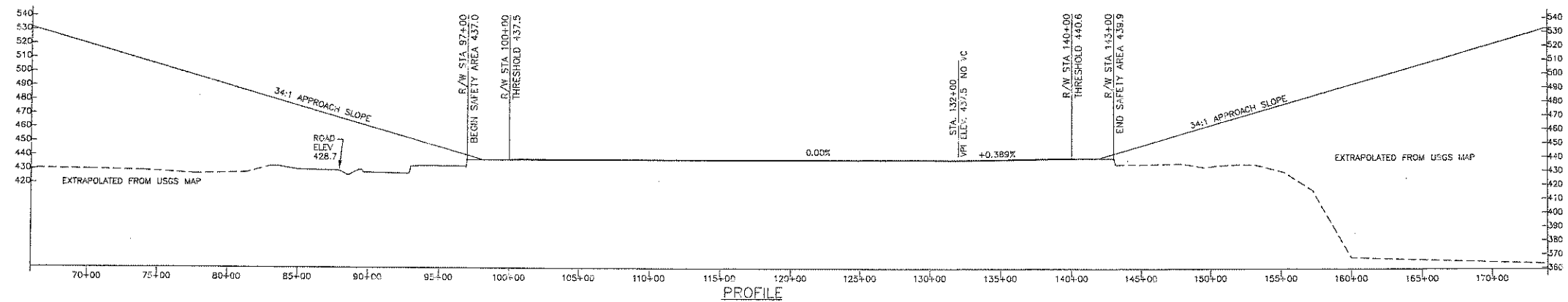
SHEET
 2 OF 4



APPROACH 5 PLAN
NO INNER APPROACH SURFACE OBSTRUCTIONS



APPROACH 23 PLAN
NO INNER APPROACH SURFACE OBSTRUCTIONS



PROFILE

DESIGN: TDH
DRAWN: TDH
CHECKED: DM

BY	DATE	REVISIONS
	2/27/09	FAA APPROVED
	10/18/01	FAA APPROVED
	6/14/01	AS-BUILT

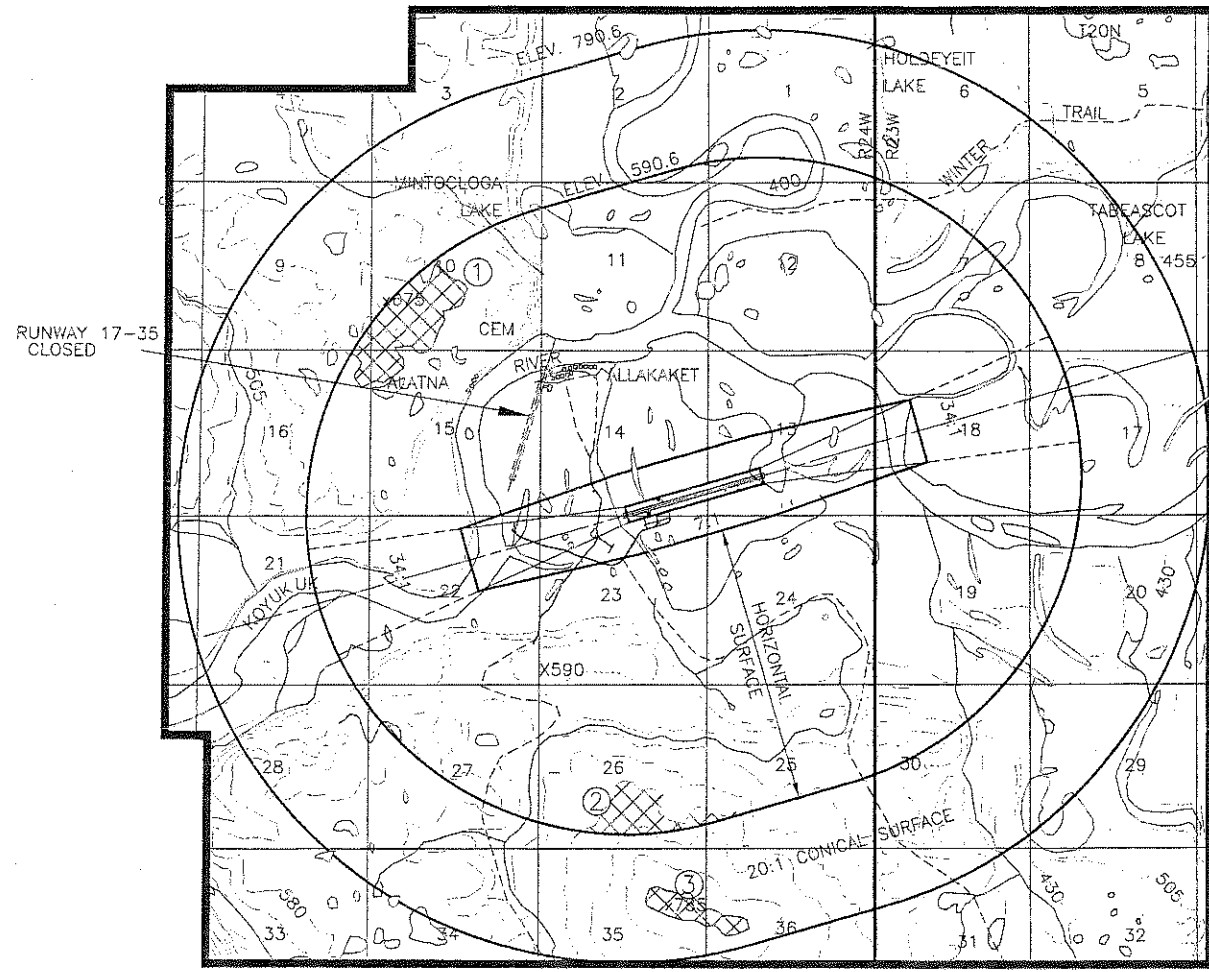
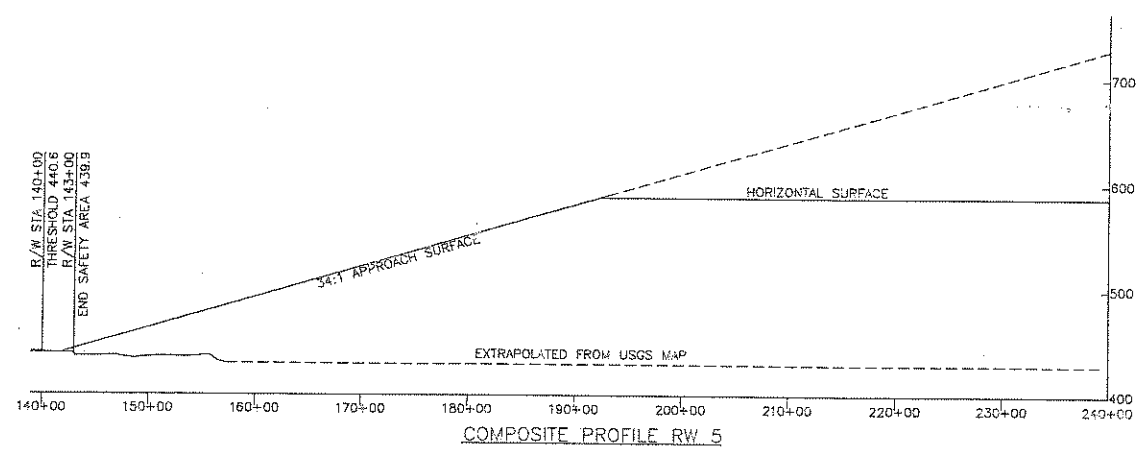
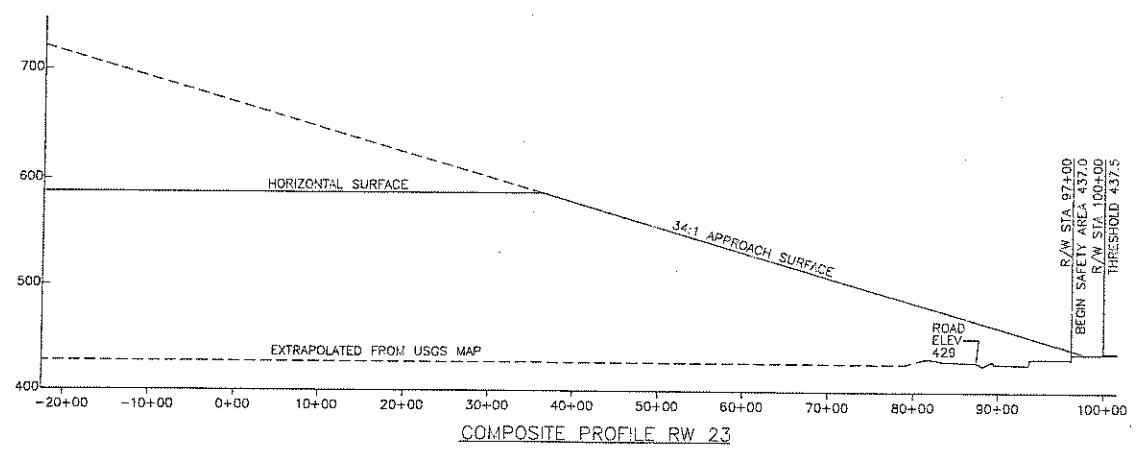
STATE OF ALASKA
DEPARTMENT OF TRANSPORTATION AND PUBLIC FACILITIES
NORTHERN REGION-DESIGN AND CONSTRUCTION-AVIATION
APPROVED: *Cindie Little*
CINDIE LITTLE, P.E. DATE: 3/13/09
DESIGN GROUP CHIEF

REVISED AIRPORT LAYOUT PLAN APPROVED
BY LETTER DATED: 3/11/09
PSW
AIRPORTS DIVISION,
ALASKAN REGION, AAL-601
AIRSPACE REVIEW #97AAL-047NRA



ALLAKAKET AIRPORT
INNER PORTION OF APPROACH
PLAN & PROFILES

SHEET
3 OF 4



OBSTRUCTION TABLE					
#	STRUCTURE NAME	TOP ELEV.	SURFACE	SURFACE PENETRATION	DISPOSITION
1	HILL N. OF APPROACH 5	675'	HORZ	+84.4'	NONE
2	HILL S. OF APPROACH 5	655'	HORZ	+62.4'	NONE
3	HILL S. OF APPROACH 5	795'	CONICAL	+191.4'	NONE

DESIGN: TDH
 DRAWN: TDH
 CHECKED: CMJ

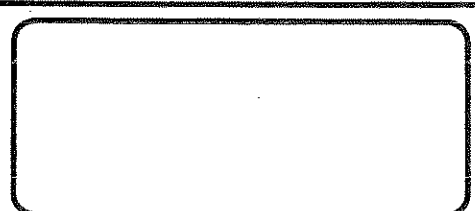
BY	DATE	REVISIONS
	2/27/09	FAA APPROVED
	10/18/01	FAA APPROVED
	6/14/01	AS-BUILT

STATE OF ALASKA
 DEPARTMENT OF TRANSPORTATION AND PUBLIC FACILITIES
 NORTHERN REGION-DESIGN AND CONSTRUCTION-AVIATION

APPROVED: *Cindie Little*
 CINDIE LITTLE, P.E. DATE: 3/13/09
 DESIGN GROUP CHIEF

REVISED AIRPORT LAYOUT PLAN APPROVED
 BY LETTER DATED: 3/16/09

[Signature]
 AIRPORTS DIVISION,
 ALASKAN REGION, AAL-601
 AIRSPACE REVIEW #97AAL-047NRA



ALLAKAKET AIRPORT
 AIRSPACE AND
 APPROACH COMPOSITE PROFILES

SHEET
 4 OF 4