



U.S. Department
of Transportation

**Federal Aviation
Administration**

Alaskan Region Airports Division

222 W. 7th Avenue, Box 14
Anchorage, Alaska 99513-7587
Tel. (907) 271-5438
Fax (907) 271-2851

December 17, 2019

Luke Bowland, P.E.
Central Region Aviation Design Section Chief
Department of Transportation and Public
Facilities, State of Alaska
4111 Aviation Avenue
PO Box 196900
Anchorage, AK 99519

Dear Mr. Bowland,

Atka Airport, Atka, Alaska
Airport Layout Plan Conditional Approval
Airspace Case No. 2018-AAL-47-NRA

The Atka Airport Layout Plan (ALP), prepared by State of Alaska DOT&PF, and bearing your signature, is conditionally approved. A signed copy of the approved ALP is enclosed.

An aeronautical study (no. 2018-AAL-47-NRA) was conducted on the proposed development. This determination does not constitute FAA approval or disapproval of the physical development involved in the proposal. It is a determination with respect to the safe and efficient use of navigable airspace by aircraft and with respect to the safety of persons and property on the ground.

The FAA Reauthorization Act of 2018, Section 163(d), has limited the FAA's review and approval authority for ALPs. This approval is based on and limited to those portions of the ALP that:

- a. Materially impact the safe and efficient operation of aircraft at, to, or from the airport;
- b. Adversely affect the safety of people or property on the ground adjacent to the airport as a result of aircraft operations; or
- c. Adversely affect the value of prior Federal investments to a significant extent.

In making this determination, the FAA has considered matters such as the effects the proposal would have on existing or planned traffic patterns of neighboring airports; the effects it would have on the existing airspace structure and projected programs of the FAA; the effects it would have on the safety of persons and property on the ground; and the effects that existing or proposed manmade objects (on file with the FAA), and known natural objects within the affected area would have on the airport proposal.

The FAA has only limited means to prevent the construction of structures near an airport. The airport sponsor has the primary responsibility to protect the airport environs through such means as local zoning ordinances, property acquisition, avigation easements, letters of agreement or other means.

This ALP approval is conditioned on acknowledgement that any development on airport property requiring Federal environmental approval must receive such written approval from FAA prior to commencement of the subject development. This ALP approval is also conditioned on acceptance of the plan under local land use laws. We encourage appropriate agencies to adopt land use and height restrictive zoning based on the plan.

Approval of the plan does not indicate that the United States will participate in the cost of any development proposed. AIP funding requires evidence of eligibility and justification at the time a funding request is ripe for consideration.

When construction of any proposed structure or development indicated on the plan is undertaken, such construction requires normal 45-day advance notification to FAA for review in accordance with applicable Federal Aviation Regulations (i.e., Parts 77, 157, 152, etc.). More notice is generally beneficial to ensure that all statutory, regulatory, technical and operational issues can be addressed in a timely manner.

Please attach this letter to the Airport Layout Plan and retain it in your files. We look forward to working with you in the continued development of the Atka airport. If you have any questions, please contact Jonathan Linquist, Community Planner, at our office at 907-271-5040.

Sincerely,

A handwritten signature in blue ink that reads "Katrina C. Moss". The signature is written in a cursive style.

Katrina C. Moss
Lead Community Planner

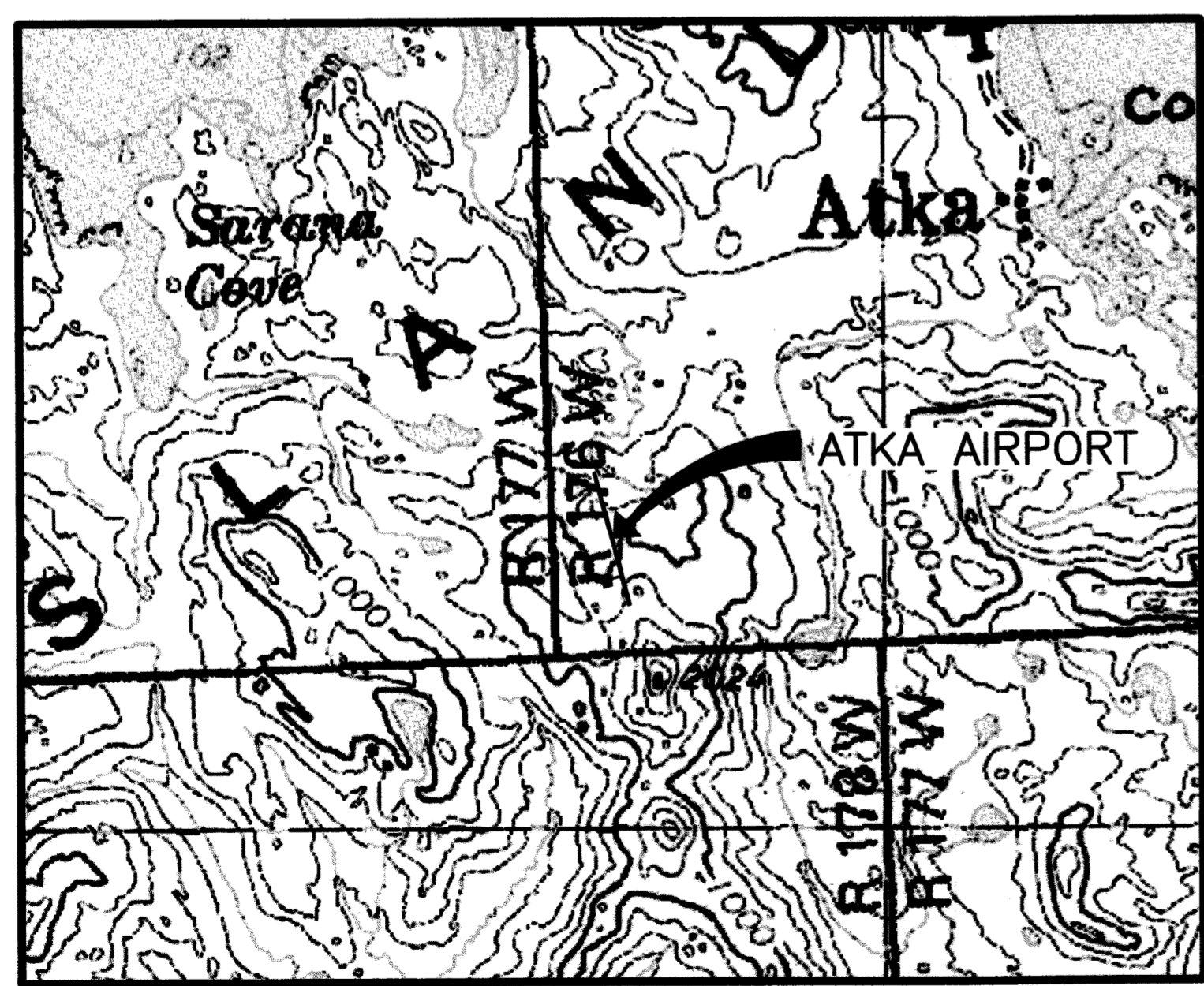
Enclosure

Date Plotted: 9/03/2019 10:33 AM
 Layout Name: U:\2017\00282\Atka\Drawings\ALP\AKA-1_COVER.dwg
 File Name:
 Designed By: TKYKER
 Drawn By: RWALQUIST
 Checked By: JUMB

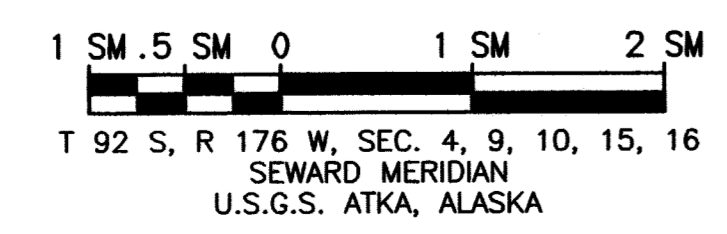


ALASKA SOUTHCOAST REGION LOCATION MAP

NOT TO SCALE



VICINITY MAP



ATKA AIRPORT AIRPORT LAYOUT PLAN

ATKA, ALASKA

ITEM	EXISTING	ULTIMATE
AIRPORT PAVEMENT		
AIRPORT REFERENCE POINT (A.R.P.)		
ANTENNA		
APPROACH SURFACE (PART 77)		
BUILDINGS		
BUILDING RESTRICTION LINE		
BUSH		
DEMOLITION EXTENTS		
DEPARTURE SURFACE		
FENCE		
JUNCTION BOX		
LIGHT POLE		
PAPI		
PAPI SITING SURFACE		
POST		
PROPERTY LINE		
REIL		
ROADWAYS		
ROTATING BEACON		
RUNWAY OBJECT FREE AREA		
RUNWAY OBSTACLE FREE ZONE		
RUNWAY PROTECTION ZONE		
RUNWAY SAFETY AREA		
SATELLITE DISH		
SEGMENTED CIRCLE		
SHORELINE		
SIGN		
STREAM		
SURVEY MONUMENT		
THRESHOLD MARKERS/LIGHTS		
THRESHOLD SITING SURFACE		
TOPOGRAPHIC CONTOURS		
UTILITY POLE		
WEATHER STATION		
WIND CONE		

DRAWING INDEX	
SHT #	TITLE
1	COVER & SHEET INDEX
2	AIRPORT DATA
3	EXISTING LAYOUT PLAN
4	ULTIMATE LAYOUT PLAN
5	TERMINAL PLAN
6	EXISTING RW 16 INNER APPROACH SURFACE
7	EXISTING RW 34 INNER APPROACH SURFACE
8	ULTIMATE RW 16 INNER APPROACH SURFACE
9	ULTIMATE RW 34 INNER APPROACH SURFACE
10	EXISTING DEPARTURE SURFACES
11	ULTIMATE DEPARTURE SURFACES
12	ULTIMATE AIRPORT AIRSPACE (FAR PART 77)
13	AIRPORT PROPERTY MAP
14	LAND USE PLAN

BY	DATE	REVISION

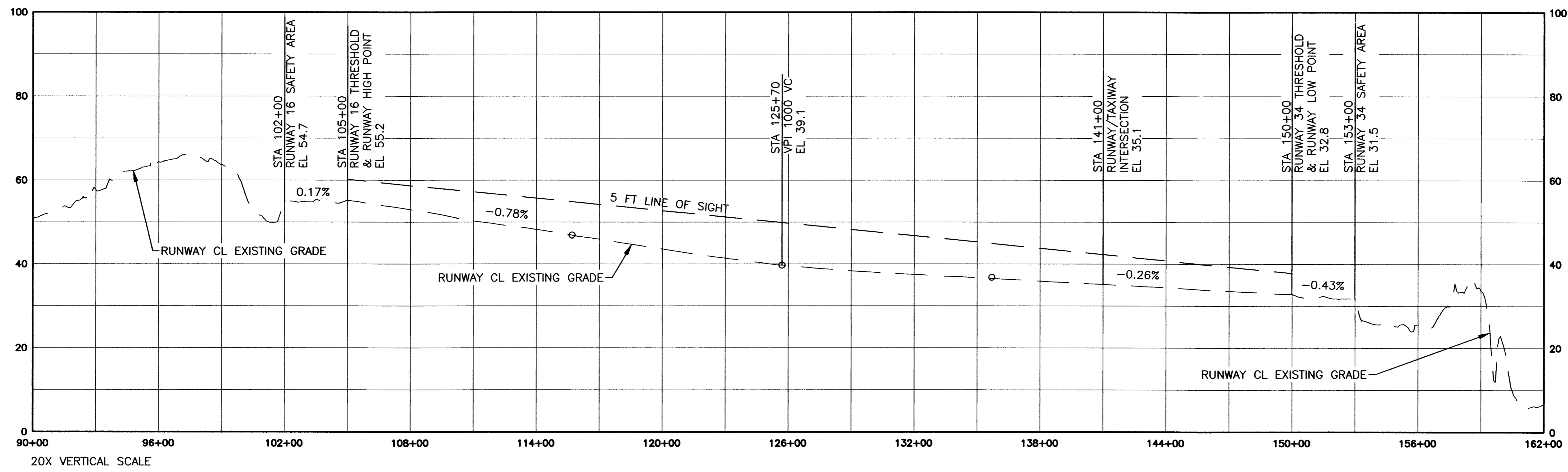
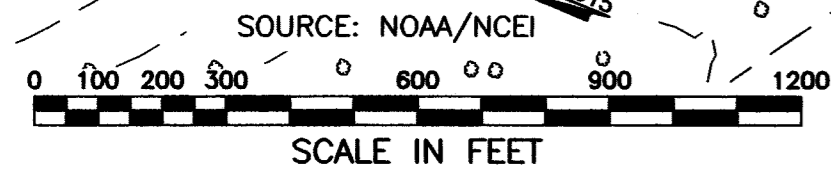
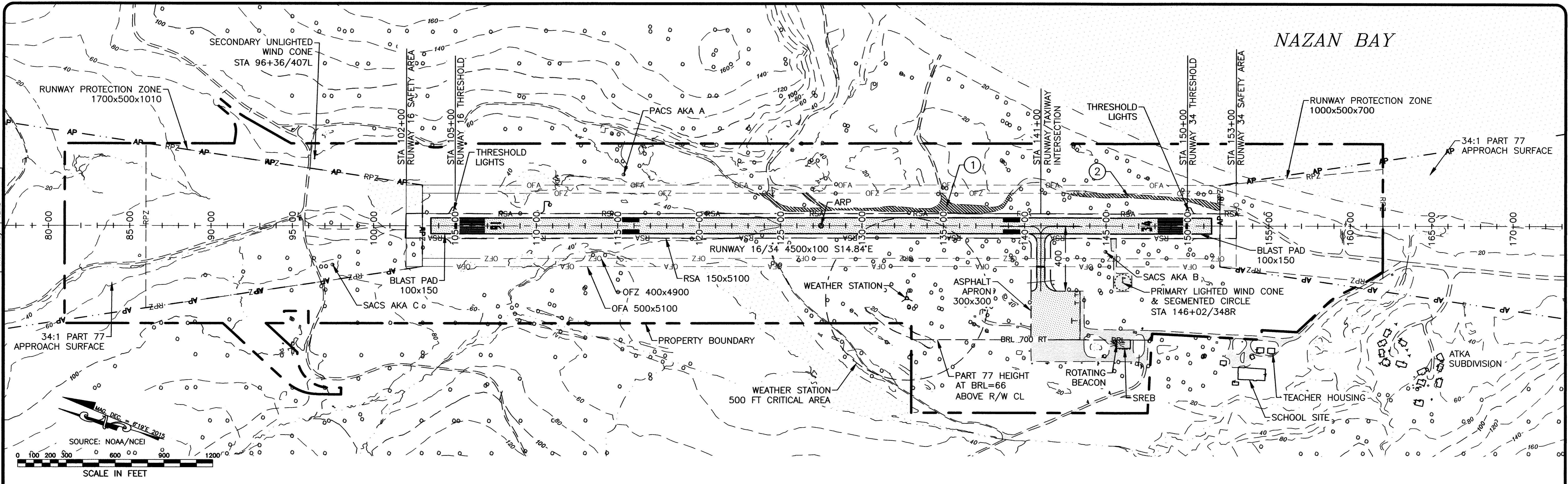
APPROVED: DATE: 11/22/19
PRECONSTRUCTION ENGINEER
RECOMMENDED: DATE: 11/22/19
DESIGN GROUP CHIEF
 AIRPORT LAYOUT PLAN CONDITIONAL APPROVAL SUBJECT TO
 ALP APPROVAL LETTER DATED 12/17/2019
 FAA AIRSPACE REVIEW NUMBER: 2018-AAL-025-NRA
 DATE: 12-17-2019
 FAA, AIRPORTS DIVISION ALASKAN REGION, AAL-612

STATE OF ALASKA
DEPARTMENT OF TRANSPORTATION
AND PUBLIC FACILITIES
CENTRAL REGION

ATKA AIRPORT
 ATKA, ALASKA
 AIRPORT LAYOUT PLAN
 COVER & SHEET INDEX

DATE: 09/03/2019
 SHEET: 1 OF 14

Date Plotted: 19/03/2019, 10:37 AM
 Layout Name: ALP-3
 File Name: U:\204700282\Atka\Drawg\VC\Sheet3\ALP-3-LAYOUT.dwg
 Designed By: TUCKER
 Drawn By: RWHLQJST
 Checked By: JLMG



OFZ/OFA OBSTRUCTIONS					
ID#	DESCRIPTION	STATION/OFFSET	AREA PENETRATED	DISPOSITION	STAGE TO CORRECT
1	ROAD	VARIES	OFZ/OFA	REMOVE	ULTIMATE
2	ROAD	VARIES	OFZ/OFA	REMOVE	ULTIMATE

LEGEND

OFZ OBSTRUCTION

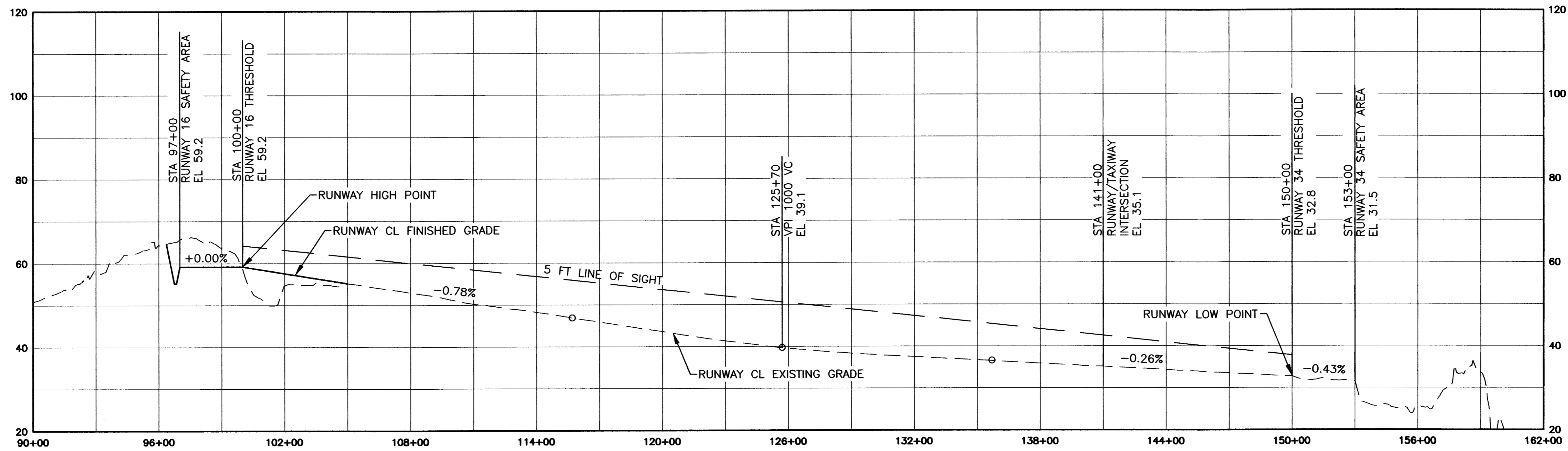
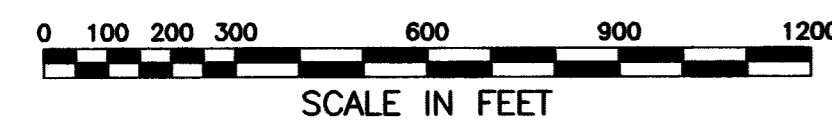
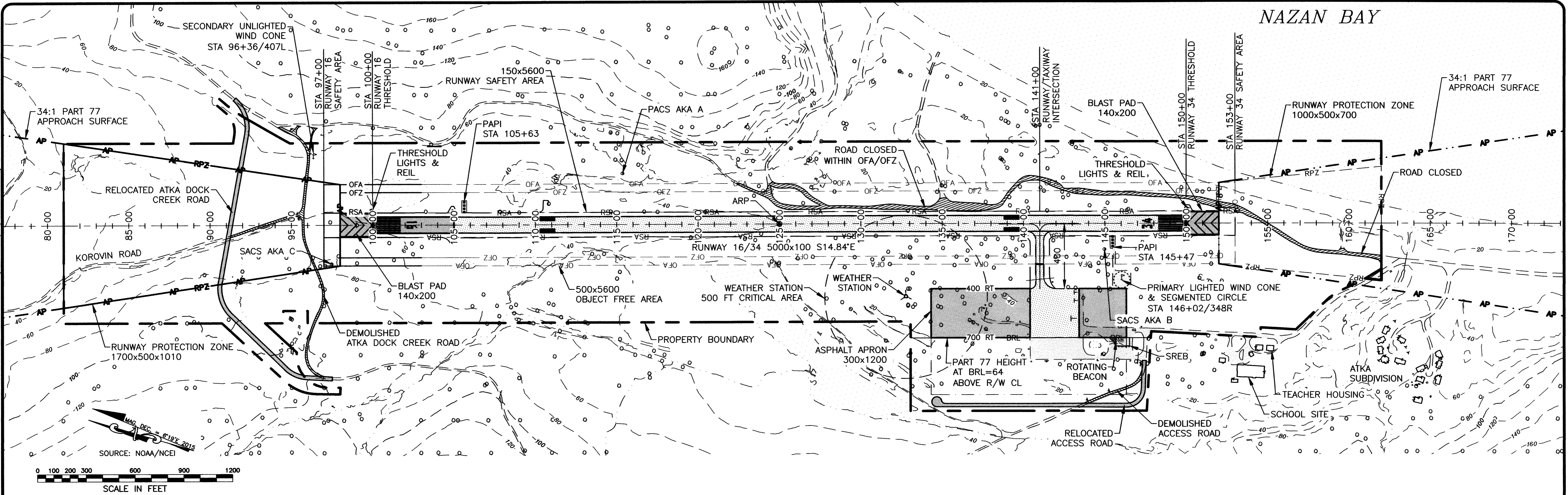
BY	DATE	REVISION

STATE OF ALASKA
DEPARTMENT OF TRANSPORTATION
AND PUBLIC FACILITIES
CENTRAL REGION

ATKA AIRPORT
 ATKA, ALASKA
 AIRPORT LAYOUT PLAN
 EXISTING LAYOUT PLAN

DATE: 08/03/2019
 SHEET: 3 OF 14

Date Plotted: 11/20/2018 9:20 AM
 Layout Name: ALP4
 File Name: U:\2017\0828\AKA\0828\AKA-CLAYOUT-ULT.dwg
 Designed By: TIKKER
 Drawn By: RWALLOUIS
 Checked By: JILMB



NOTES:
 1. NO OFZ OBJECT PENETRATIONS.

LEGEND

OFZ OBSTRUCTION TO BE REMOVED

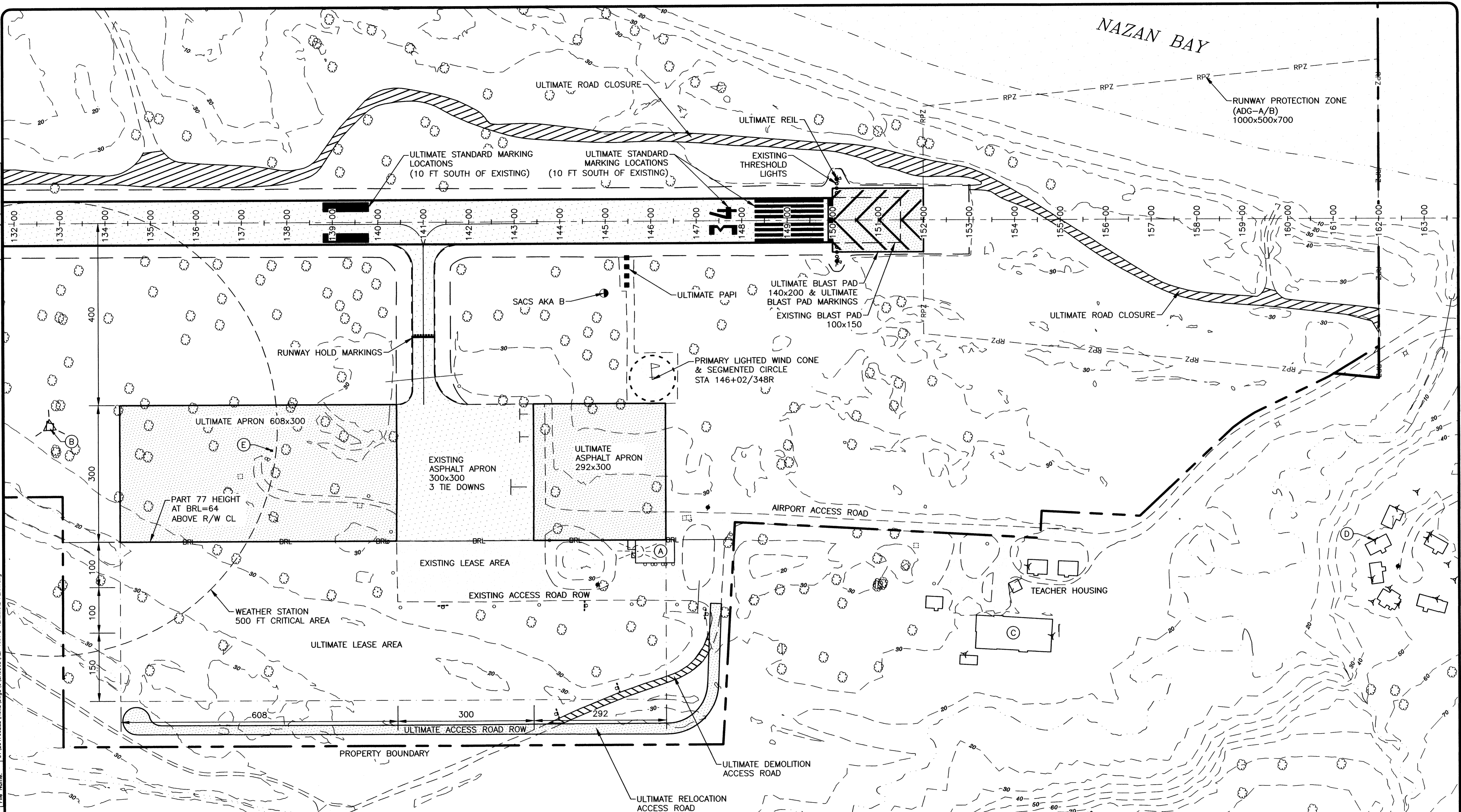
BY	DATE	REVISION

STATE OF ALASKA
DEPARTMENT OF TRANSPORTATION
AND PUBLIC FACILITIES
CENTRAL REGION

ATKA AIRPORT
 ATKA, ALASKA
 AIRPORT LAYOUT PLAN
 ULTIMATE LAYOUT PLAN

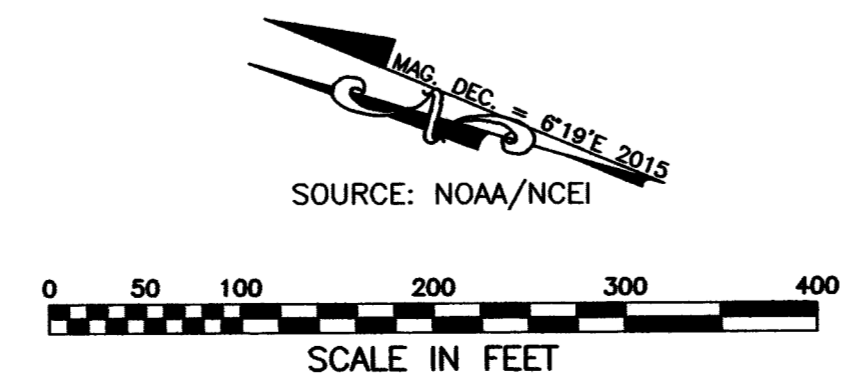
DATE: 09/03/2019
 SHEET: 4 OF 14

Date Plotted: 19/03/2019 10:53 AM
 Project Name: ALP-5
 File Name: U:\201700282\Atka\Drawings\ALP-5\Terminal-PLAN.dwg
 Designed By: TUCKER
 Drawn By: RWAHLQUIST
 Checked By: JUMB



FACILITY DATA TABLE

ID#	DESCRIPTION	STATION/OFFSET	TOP ELEV.	OBSTRUCTION MARKING
A	SREB (3-BAY) & ROTATING BEACON	146+05/727R	63.3	N
B	WEATHER STATION	132+77/450R	66.9	N
C	SCHOOL	153+94/912R	53.0	N
D	ATKA SUBDIVISION	161+88/707R	73.3	N
E	ELECTRICAL BUILDING	137+65/500R	41.8	N



BY	DATE	REVISION

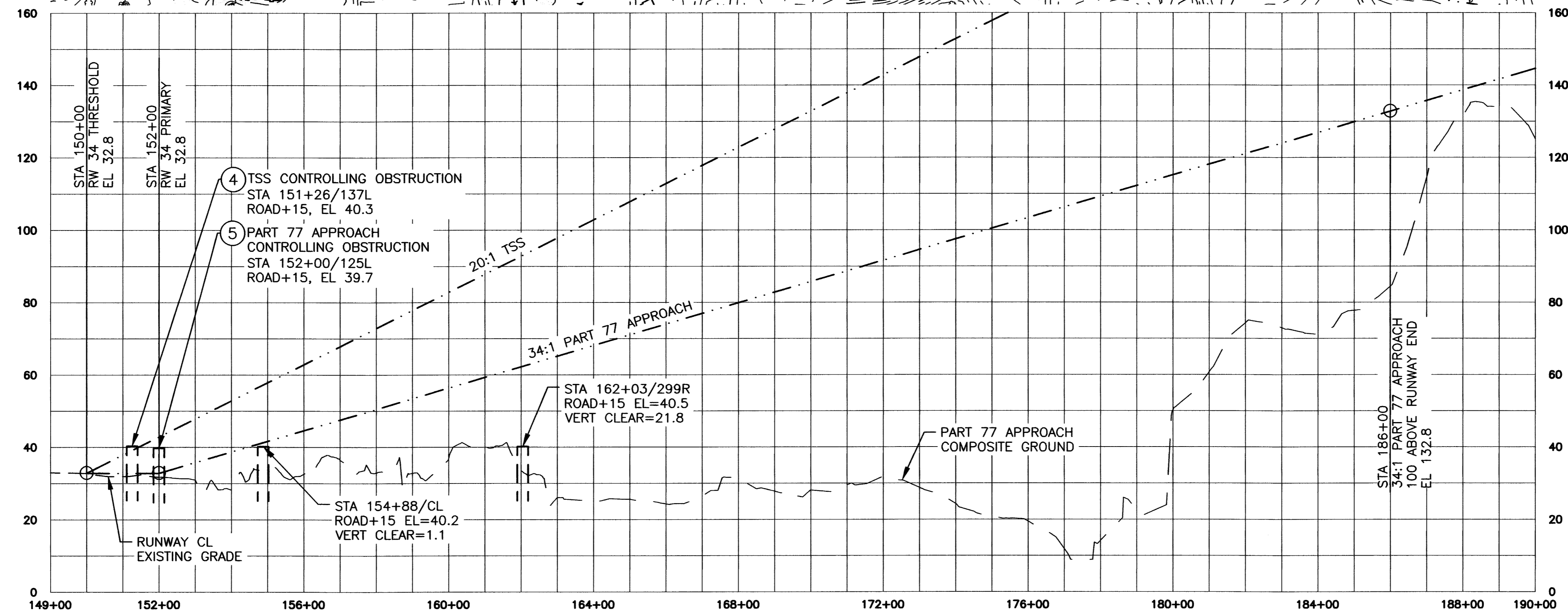
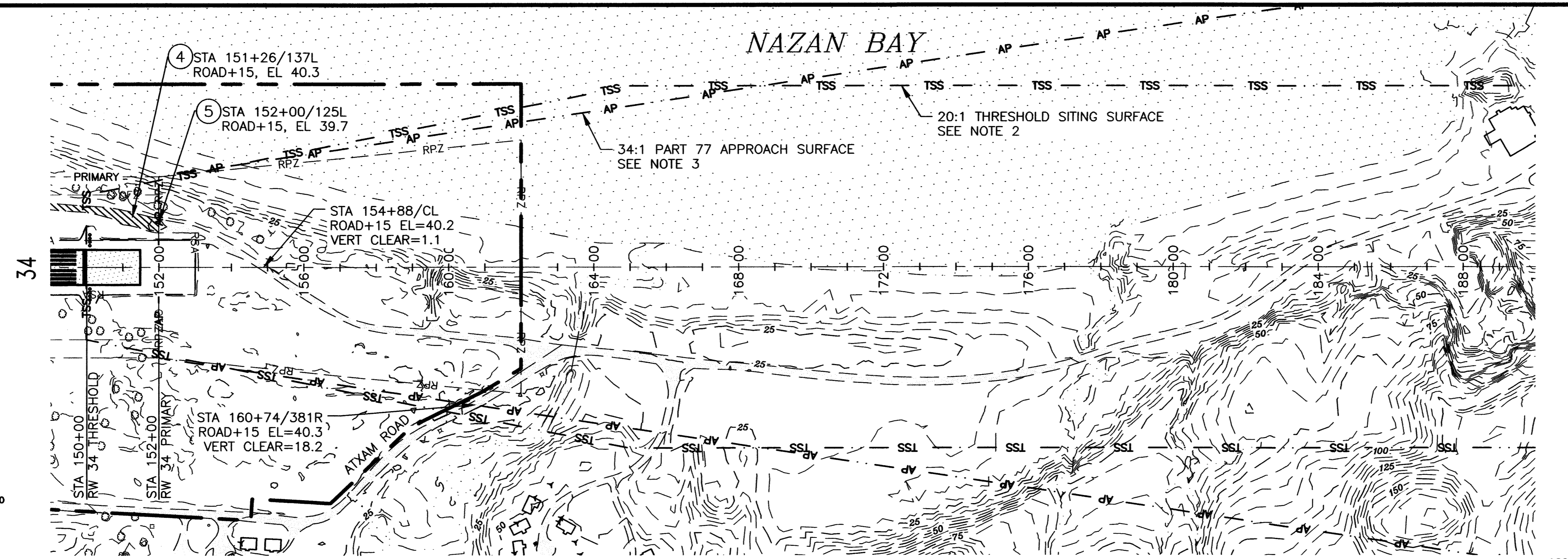
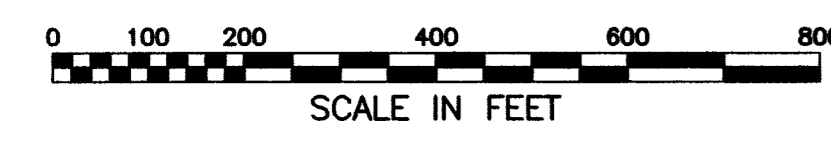
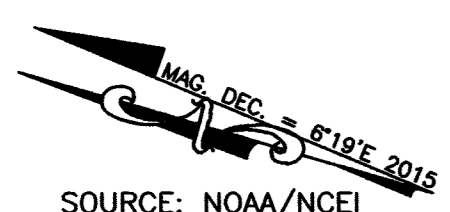
STATE OF ALASKA
DEPARTMENT OF TRANSPORTATION
AND PUBLIC FACILITIES
CENTRAL REGION

ATKA AIRPORT
 ATKA, ALASKA
 AIRPORT LAYOUT PLAN
 TERMINAL PLAN

DATE: 09/03/2019
 SHEET: 5 OF 14

Date Plotted: 11/20/2019 9:52 AM
 Layout Name: ALP-7
 File Name: U:\2017\2018\2019\ALP-7\APPCH-SURF-RW34.dwg
 Designed By: TKXKER
 Drawn By: RWALLOUST
 Checked By: JLMIB

100x4500
 RUNWAY
 S14.84°E
 TRUE MEAN
 BEARING



TSS OBSTRUCTION TABLE (INNER PORTION RW 34)

ID#	DESCRIPTION	STATION/OFFSET	BASE ELEV	TOP ELEV	SURFACE PENETRATED	SURFACE ELEVATION	AMOUNT PENETRATED	DISPOSITION	STAGE TO CORRECT
4	ROAD+15	151+26/137L	25.3	40.3	TSS	39.1	1.2	CLOSE ROAD	ULTIMATE

PART 77 OBSTRUCTION TABLE (INNER PORTION RW 34)

ID#	DESCRIPTION	STATION/OFFSET	BASE ELEV	TOP ELEV	SURFACE PENETRATED	SURFACE ELEVATION	AMOUNT PENETRATED	DISPOSITION	STAGE TO CORRECT
5	ROAD+15	152+00/125L	24.7	39.7	APPROACH	32.8	6.9	CLOSE ROAD	ULTIMATE

NOTES:

- THERE ARE CONTROLLING OBSTRUCTIONS FOR THE APPROACH TO RUNWAY 34. THE OBSTRUCTION CLEARANCE SLOPES ARE ESTABLISHED AS 20:1 PER AC 150/5200-35, CHAPTER 4.
- THRESHOLD SITING CRITERIA IS DEFINED PER AC 150/5300-13A, CHANGE 1, TABLE 3-2, RUNWAY TYPE 3 FOR APPROACH ENDS OF RUNWAYS EXPECTED TO SERVE LARGE AIRPLANES (VISUAL DAY/NIGHT); OR INSTRUMENT MINIMUMS GREATER THAN OR EQUAL TO 1 STATUTE MILE (DAY ONLY).
- EXISTING PART 77 APPROACH IS 500 (INNER) X 3500 (OUTER) X 10000 (LENGTH) AT 34:1 SLOPE BASED ON OTHER THAN UTILITY AND NON-PRECISION INSTRUMENT RUNWAY CRITERIA. REFER TO THE AIRPORT AIRSPACE DRAWING FOR PENETRATIONS OF THE ULTIMATE PART 77 OUTER APPROACH SURFACE.

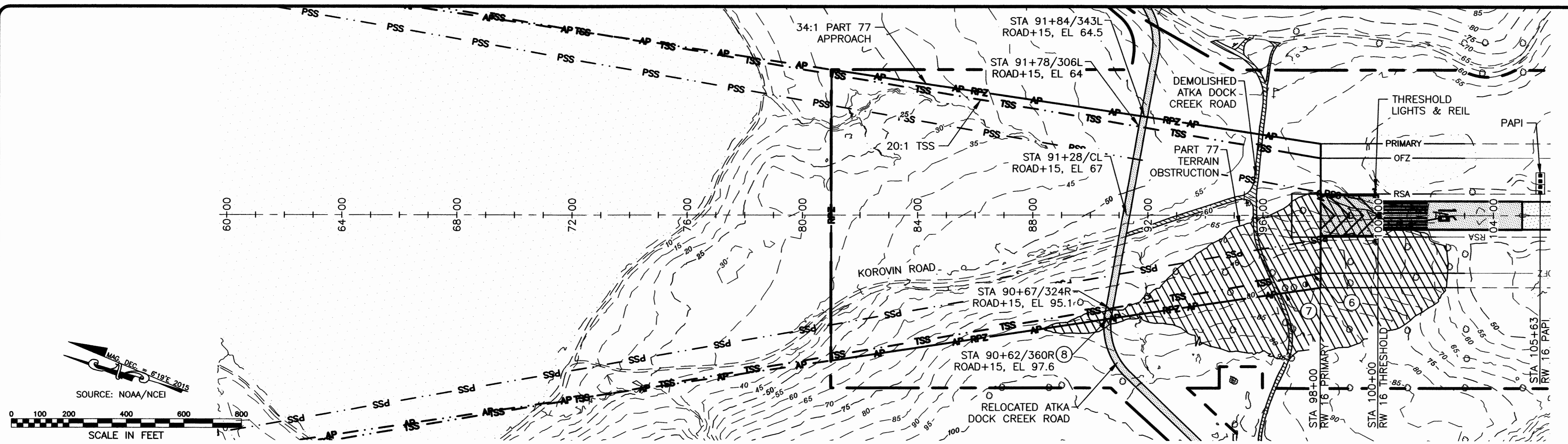
BY	DATE	REVISION

STATE OF ALASKA
DEPARTMENT OF TRANSPORTATION
AND PUBLIC FACILITIES
CENTRAL REGION

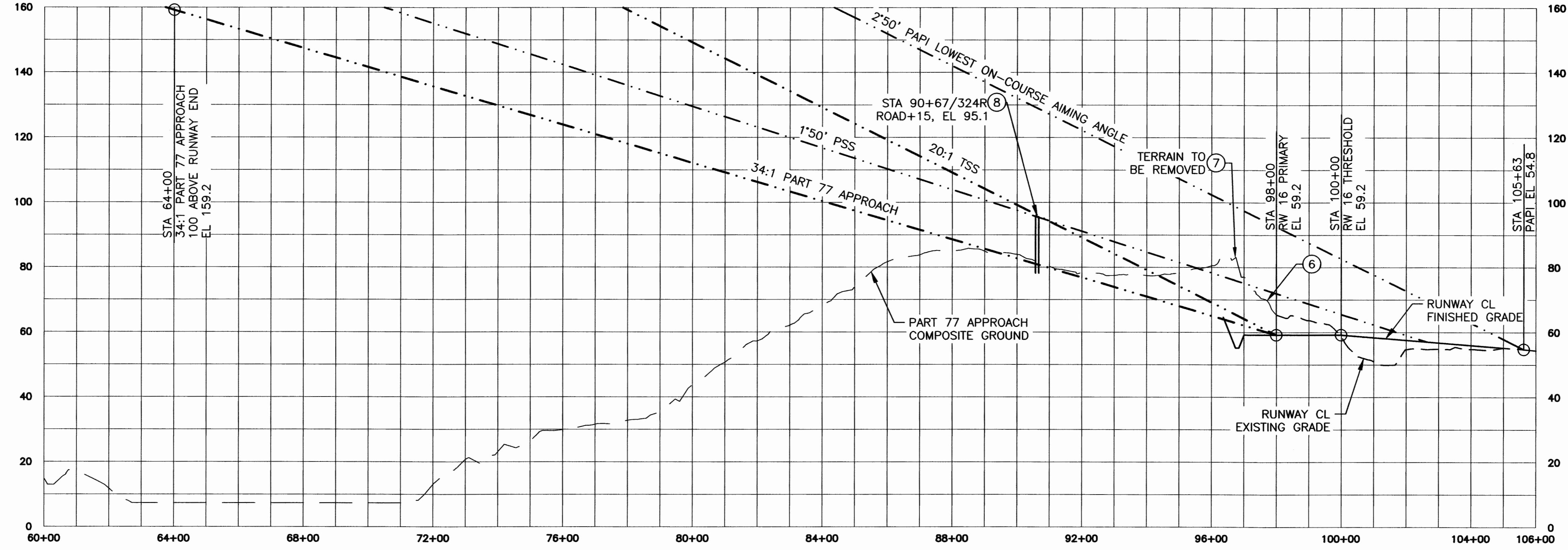
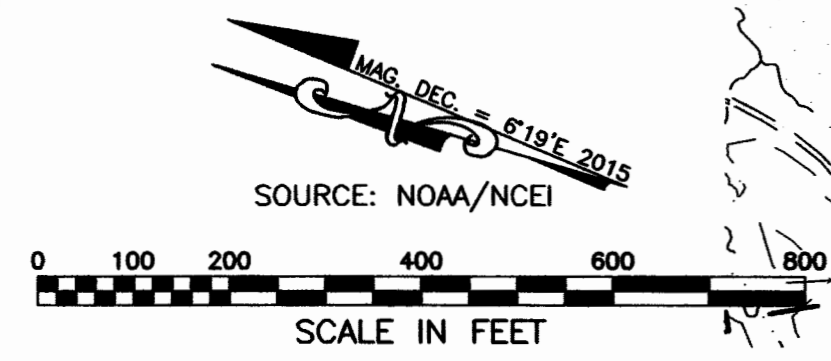
ATKA AIRPORT
 ATKA, ALASKA
 AIRPORT LAYOUT PLAN

DATE: 09/03/2019
 SHEET: 7 OF 14
 EXISTING RW 34 INNER APPROACH SURFACE

Date Plotted: 9/03/2019, 11:08 AM
 Layout Name: U:\2017\0028\ATKA\Drawings\Sheet\ALP-MK4-B-APRCH-SURF-RW16-ULT.dwg
 File Name:
 Designed By: TRYKER
 Drawn By: RWAHQUST
 Checked By: JUMB



100x5000
 RUNWAY
 S14.84°E
 TRUE MEAN
 BEARING



TSS OBSTRUCTION TABLE (INNER PORTION RW 16)

ID#	DESCRIPTION	STATION/OFFSET	BASE ELEV	TOP ELEV	SURFACE PENETRATED	SURFACE ELEVATION	AMOUNT PENETRATED	DISPOSITION	STAGE TO CORRECT
6	TERRAIN (HP)	97+67/200R	60.2	60.2	TSS	79.8	19.6	REMOVE	ULTIMATE

PART 77 OBSTRUCTION TABLE (INNER PORTION RW 16)

ID#	DESCRIPTION	STATION/OFFSET	BASE ELEV	TOP ELEV	SURFACE PENETRATED	SURFACE ELEVATION	AMOUNT PENETRATED	DISPOSITION	STAGE TO CORRECT
7	TERRAIN (HP)	97+35/246R	82.1	82.1	APPROACH	61.1	21	REMOVE	ULTIMATE
8	ULT ROAD+15	9+62/360R	82.6	97.6	PART 77	80.9	16.7	NONE	N/A

NOTES:

1. THERE ARE CONTROLLING OBSTRUCTIONS FOR THE ULTIMATE APPROACH TO RUNWAY 16 THAT MUST BE REMOVED. THE OBSTRUCTION CLEARANCE SLOPES ARE ESTABLISHED AS 20:1 PER AC 150/5200-35, CHAPTER 4.
2. ULTIMATE THRESHOLD SITING SURFACE CRITERIA IS DEFINED PER AC 150/5300-13A, CHANGE 1, TABLE 3-2, RUNWAY TYPE 4, APPROACH ENDS OF RUNWAYS EXPECTED TO SUPPORT INSTRUMENT NIGHT OPERATIONS, SERVING APPROACH CATEGORY A AND B AIRCRAFT ONLY.
3. REFER TO THE AIRPORT AIRSPACE DRAWING FOR PENETRATIONS OF THE ULTIMATE OUTER APPROACH SURFACE.
4. (HP) = POINT OF HIGHEST PENETRATION.

BY	DATE	REVISION

STATE OF ALASKA
DEPARTMENT OF TRANSPORTATION
AND PUBLIC FACILITIES
CENTRAL REGION

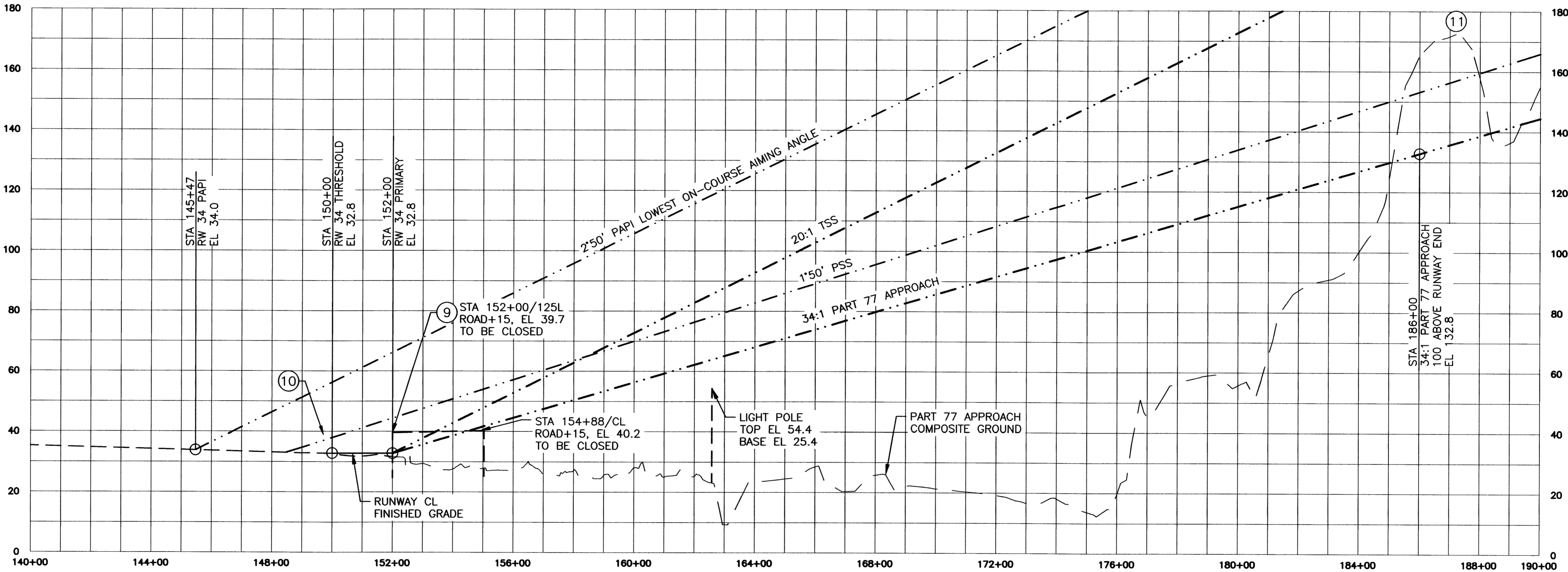
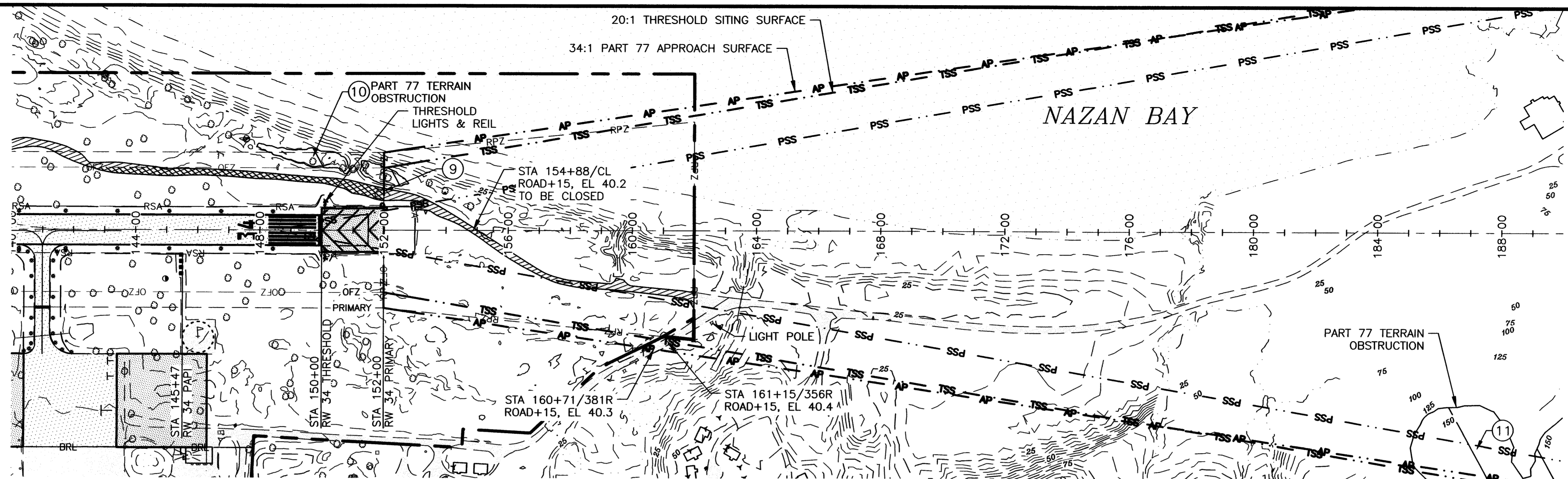
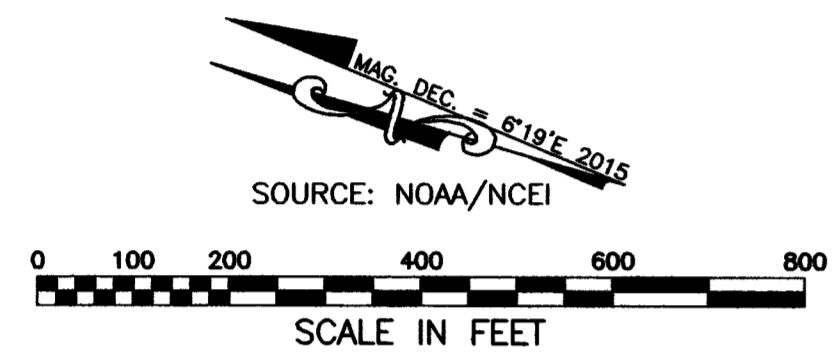
ATKA AIRPORT
 ATKA, ALASKA
 AIRPORT LAYOUT PLAN

ULTIMATE RW 16 INNER APPROACH SURFACE

DATE: 09/03/2019
 SHEET: 8 OF 14

Date Plotted: 19/03/2019, 11:12 AM
 Layout Name: ALP-9
 File Name: U:\20170282\Atka\Drawg\Sheet3\ALP-9-APRCH-SURF-RW34-ULT.dwg
 Designed By: TKMYER
 Drawn By: RWHLQJST
 Checked By: JUMB

100x5000
 RUNWAY
 S14.84°E
 TRUE MEAN
 BEARING



TSS OBSTRUCTION TABLE (INNER PORTION RW 34)

ID#	DESCRIPTION	STATION/OFFSET	BASE ELEV	TOP ELEV	SURFACE PENETRATED	SURFACE ELEVATION	AMOUNT PENETRATED	DISPOSITION	STAGE TO CORRECT
9	ROAD+15 (HP)	152+00/125L	24.6	39.6	TSS	32.8	6.8	CLOSE ROAD	ULTIMATE

PART 77 OBSTRUCTION TABLE (INNER PORTION RW 34)

ID#	DESCRIPTION	STATION/OFFSET	BASE ELEV	TOP ELEV	SURFACE PENETRATED	SURFACE ELEVATION	AMOUNT PENETRATED	DISPOSITION	STAGE TO CORRECT
9	ROAD+15 (HP)	152+00/125L	24.6	39.6	PART 77 APPR	32.8	6.8	CLOSE ROAD	ULTIMATE
10	TERRAIN (HP)	149+65/230L	38.8	38.8	PART 77 PRIMARY	34.0	4.8	TO REMAIN	N/A
11	TERRAIN (HP)	187+20/690R	172.5	172.5	PART 77 APPR	136.3	36.2	NONE	N/A

NOTES:

1. THERE ARE CONTROLLING OBSTRUCTIONS FOR THE ULTIMATE APPROACH TO RUNWAY 34 THAT MUST BE REMOVED. THE OBSTRUCTION CLEARANCE SLOPES ARE ESTABLISHED AS 20:1 PER AC 150/5200-35, CHAPTER 4.
2. ULTIMATE THRESHOLD SITING SURFACE CRITERIA IS DEFINED PER AC 150/5300-13A, CHANGE 1, TABLE 3-2, RUNWAY TYPE 4. APPROACH ENDS OF RUNWAYS EXPECTED TO SUPPORT INSTRUMENT NIGHT OPERATIONS, SERVING APPROACH CATEGORY A AND B AIRCRAFT ONLY.
3. REFER TO THE AIRPORT AIRSPACE DRAWING FOR PENETRATIONS OF THE ULTIMATE OUTER APPROACH SURFACE.
4. (HP) = POINT OF HIGHEST PENETRATION.

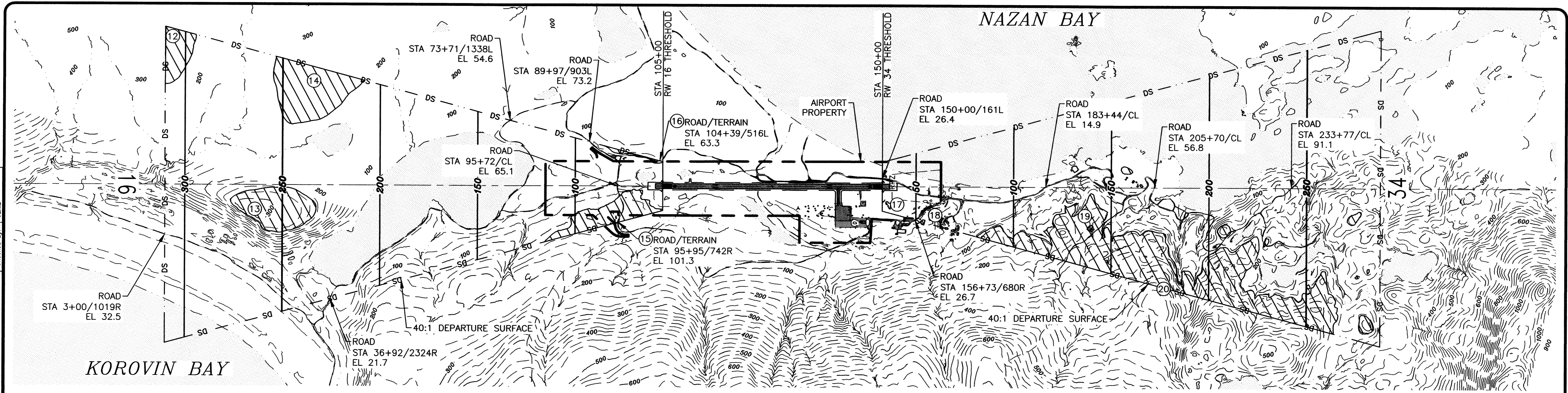
BY	DATE	REVISION

STATE OF ALASKA
DEPARTMENT OF TRANSPORTATION
AND PUBLIC FACILITIES
CENTRAL REGION

ATKA AIRPORT
 ATKA, ALASKA
 AIRPORT LAYOUT PLAN
 ULTIMATE RW 34 INNER APPROACH SURFACE

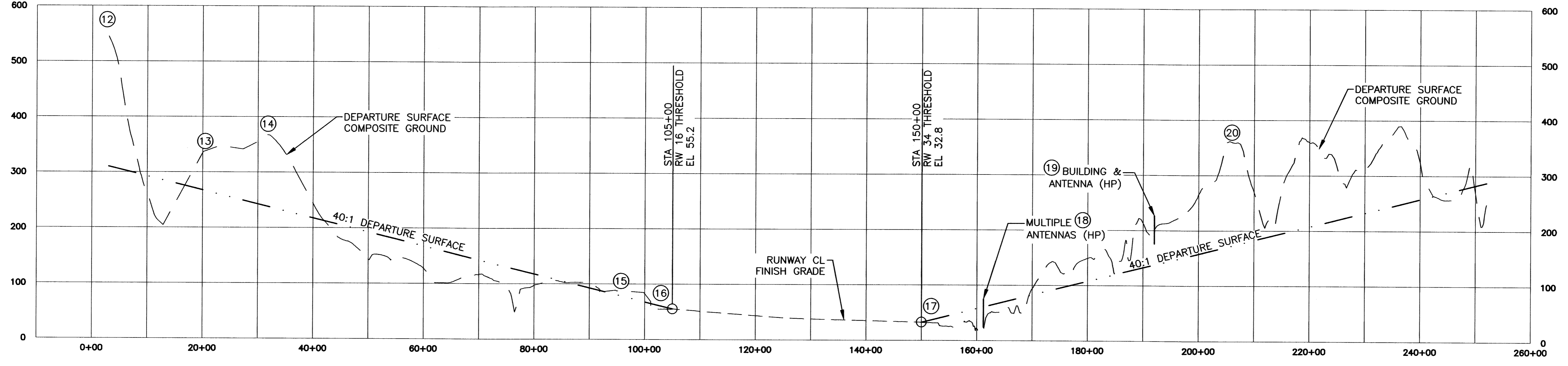
DATE:
 09/03/2019
 SHEET:
 9 OF 14

Date Plotted: 19/03/2019, 11:14 AM
 Layout Name: ALP-10
 File Name: U:\2017\02\28\ALP-10\Drawings\Sheet\ALP-10-DEPT-SURF.dwg
 Designed By: MICRONALD
 Drawn By: RWALOUST
 Checked By: JUMB



KOROVIN BAY

NAZAN BAY



ID#	DESCRIPTION	STATION/OFFSET	BASE ELEV	TOP ELEV	SURFACE PENETRATED	SURFACE ELEVATION	AMOUNT PENETRATED	DISPOSITION	STAGE TO CORRECT
12	TERRAIN (HP)	3+06/3229L	557	557	DEPARTURE	310	247	NONE	N/A
13	TERRAIN (HP)	20+92/492R	324	324	DEPARTURE	265	59	NONE	N/A
14	TERRAIN (HP)	31+82/2175L	367	367	DEPARTURE	238	129	NONE	N/A
15	ROAD+15	95+95/742R	101.3	116.3	DEPARTURE	77.8	23.5	RELOCATE ROAD	ULTIMATE
16	ROAD+15	104+39/516L	63.3	78.3	DEPARTURE	56.7	6.6	NONE	N/A

(HP) = HIGH POINT OF OBSTRUCTION

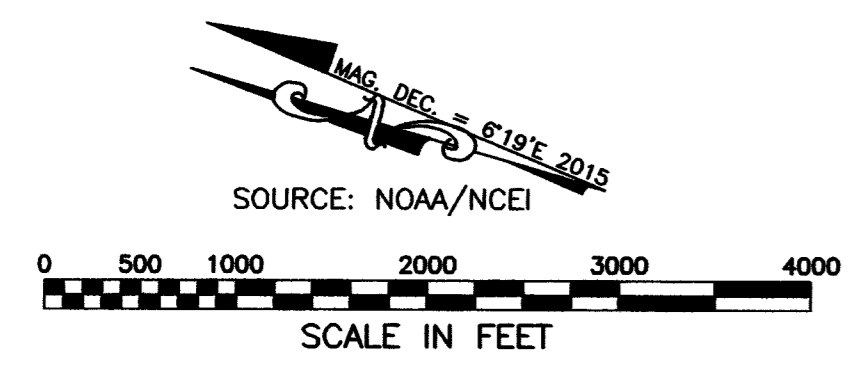
ID#	DESCRIPTION	STATION/OFFSET	BASE ELEV	TOP ELEV	SURFACE PENETRATED	SURFACE ELEVATION	AMOUNT PENETRATED	DISPOSITION	STAGE TO CORRECT
17	TERRAIN (HP)	151+41/373R	42	42	DEPARTURE	36	6	NONE	N/A
18	MULTIPLE ANTENNAS (HP)	161+82/791R	51.6	75.1	DEPARTURE	62.4	12.7	OBST. LIGHTING	ULTIMATE
19	BUILDING & ANTENNA (HP)	192+72/861R	175.6	227.0	DEPARTURE	139.6	87.4	OBST. LIGHTING	ULTIMATE
20	TERRAIN (HP)	206+14/2000R	362	362	DEPARTURE	173	189	NONE	N/A

(HP) = HIGH POINT OF OBSTRUCTION

LEGEND

DEPARTURE SURFACE PENETRATIONS

NOTE:
 1. DEPARTURE SURFACES ARE DEFINED PER AC 150/5300-13A, CHANGE 1, TABLE 3-2, LINE 9.



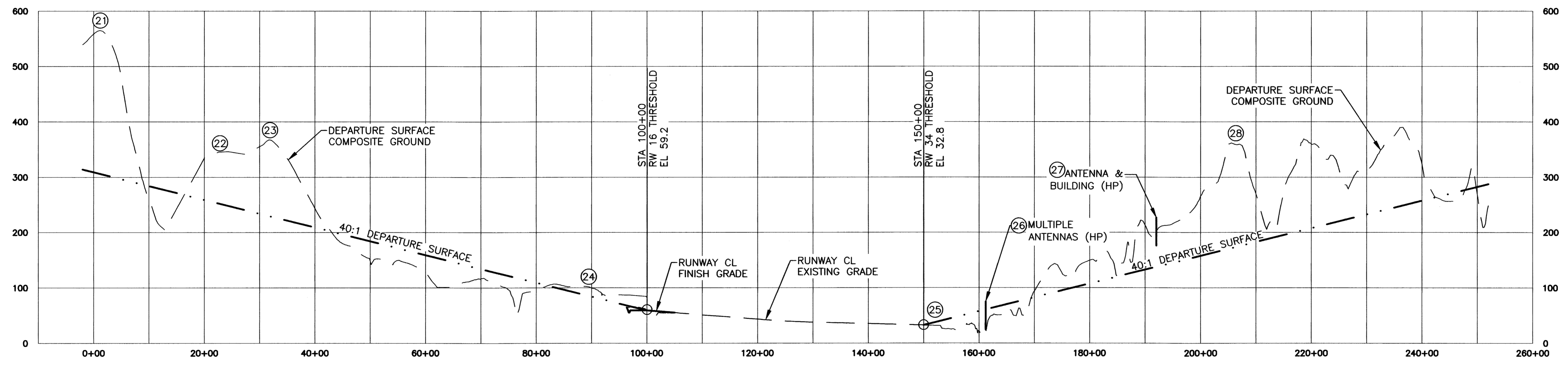
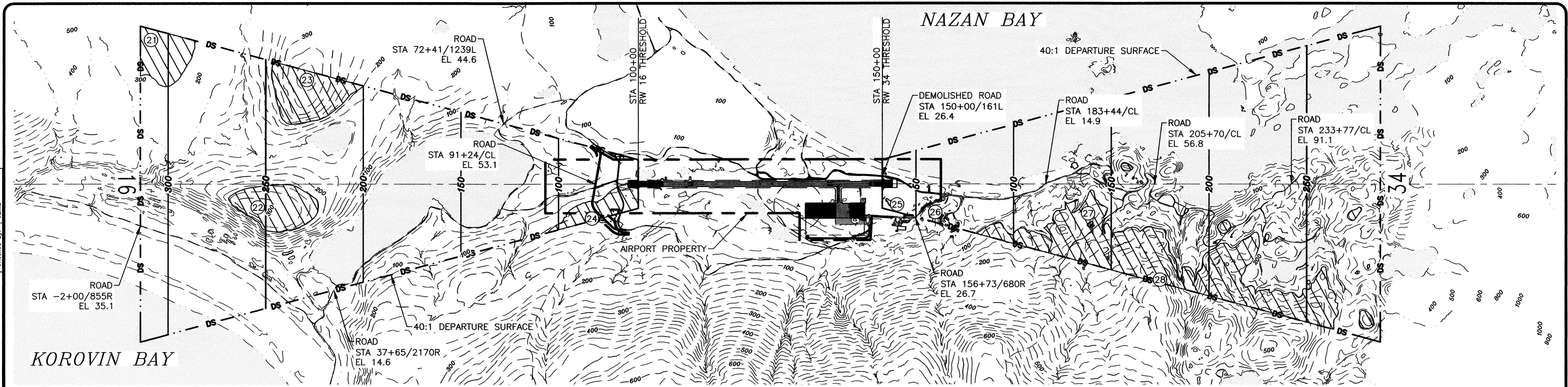
BY	DATE	REVISION

**STATE OF ALASKA
 DEPARTMENT OF TRANSPORTATION
 AND PUBLIC FACILITIES
 CENTRAL REGION**

ATKA AIRPORT
 ATKA, ALASKA
 AIRPORT LAYOUT PLAN
 EXISTING DEPARTURE SURFACES

DATE: 09/03/2019
 SHEET: 10 OF 14

Date Plotted: 9/03/2019 11:16 AM
 Layout Name: ALP-11
 File Name: U:\2017\02022\AKA\Omega\AKA-11-DEPT-SURF-ULT.dwg
 Designed By: MCDONALD
 Drawn By: RWALQUIST
 Checked By: JUNG



ID#	DESCRIPTION	STATION/OFFSET	BASE ELEV	TOP ELEV	SURFACE PENETRATED	SURFACE ELEVATION	AMOUNT PENETRATED	DISPOSITION	STAGE TO CORRECT
21	TERRAIN (HP)	-1+83/3216L	543	543	DEPARTURE	314	229	NONE	N/A
22	TERRAIN (HP)	20+92/492R	324	324	DEPARTURE	257	67	NONE	N/A
23	TERRAIN (HP)	31+82/2175L	367	367	DEPARTURE	230	137	NONE	N/A
24	ROAD+15 (HP)	92+74/692R	98	113	DEPARTURE	77	36	NONE	N/A

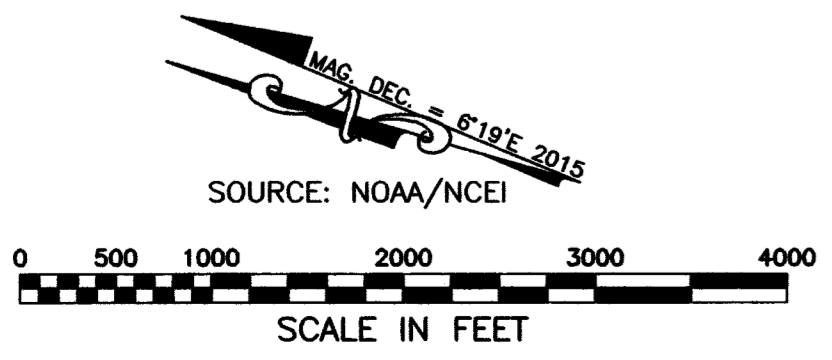
(HP) = HIGH POINT OF OBSTRUCTION

ID#	DESCRIPTION	STATION/OFFSET	BASE ELEV	TOP ELEV	SURFACE PENETRATED	SURFACE ELEVATION	AMOUNT PENETRATED	DISPOSITION	STAGE TO CORRECT
25	TERRAIN (HP)	151+41/373R	42	42	DEPARTURE	36	6	NONE	N/A
26	MULTIPLE ANTENNAS (HP)	161+82/791R	51.6	75.1	DEPARTURE	62.4	12.7	OBST. LIGHTING	
27	BUILDING & ANTENNA (HP)	192+72/861R	175.6	227.0	DEPARTURE	139.6	87.4	OBST. LIGHTING	ULTIMATE
28	TERRAIN (HP)	206+14/2000R	362	362	DEPARTURE	173	189	NONE	N/A

(HP) = HIGH POINT OF OBSTRUCTION

LEGEND
 DEPARTURE SURFACE PENETRATIONS

NOTE:
 1. DEPARTURE SURFACES ARE DEFINED PER AC 150/5300-13A, CHANGE 1, TABLE 3-2, LINE 9.



BY	DATE	REVISION

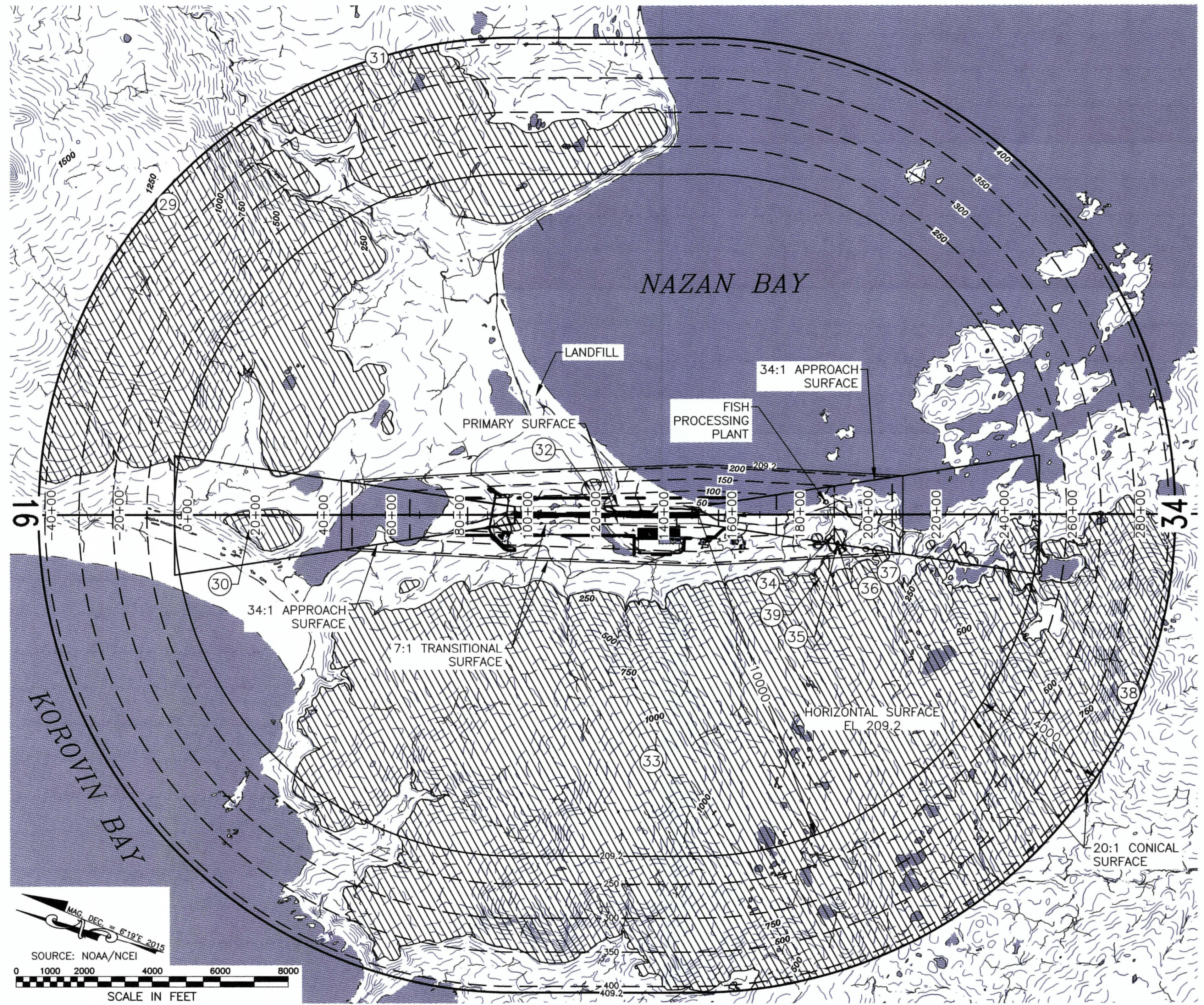
**STATE OF ALASKA
DEPARTMENT OF TRANSPORTATION
AND PUBLIC FACILITIES
CENTRAL REGION**

ATKA AIRPORT
ATKA, ALASKA
AIRPORT LAYOUT PLAN

ULTIMATE DEPARTURE SURFACES

DATE: 09/03/2019
SHEET: 11 OF 14

Date Plotted: 19/03/2019, 11:19 AM
 Designed By: MCDONALD
 Drawn By: RWALOUJIST
 Checked By: JUMB
 Layout Name: ALP-12
 File Name: U:\2017\02\28\AK\AKA-12-AIRSPACE-PART77.dwg



LEGEND

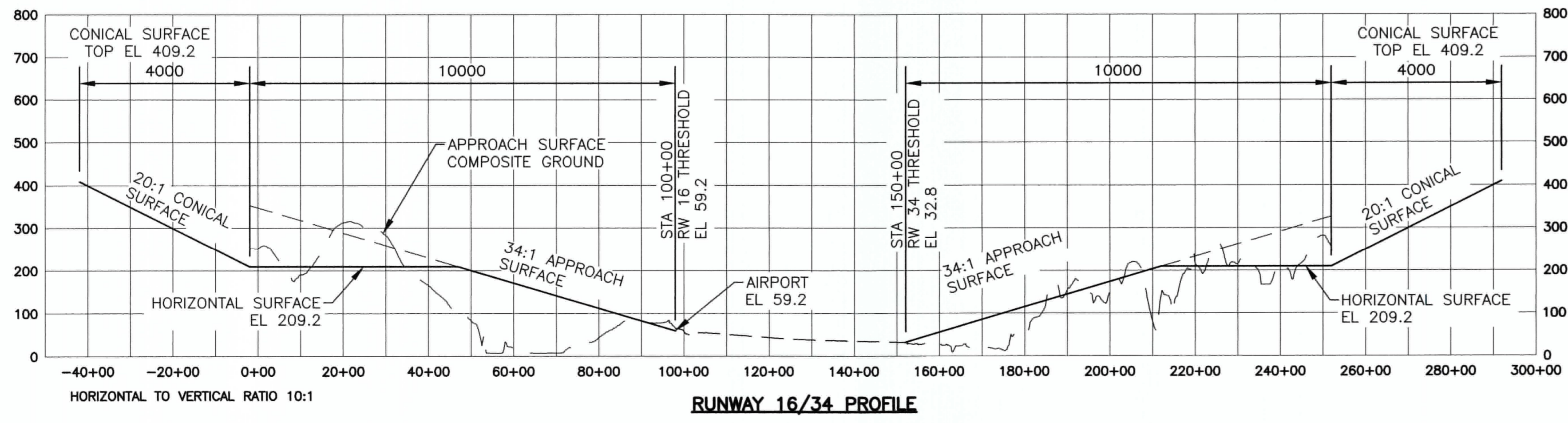
FAR PART 77 SURFACE PENETRATIONS

OBSTRUCTION, SEE PLAN VIEW

- NOTES:**
1. ULTIMATE AIRPORT ELEVATION IS 59.2 (NAVD 88)
 2. PRIMARY SURFACE WIDTH - 500 FT
 3. REFER TO INNER PORTION OF THE APPROACH SURFACE DRAWING FOR CLOSE-IN OBSTRUCTIONS.
 4. THERE ARE NO KNOWN HEIGHT RESTRICTIONS.

ID#	DESCRIPTION	STATION/OFFSET	ELEVATION	SURFACE PENETRATED	SURFACE ELEVATION	AMOUNT PENETRATED	DISPOSITION	STAGE TO CORRECT
29	TERRAIN (HP)	-4+08/9162L	1181.5	CONICAL	395.1	786.4	TO REMAIN	N/A
30	TERRAIN (HP)	20+73/506R	324.5	APPROACH	209.2	115.3	TO REMAIN	N/A
31	TERRAIN (HP)	57+06/13359L	651.1	CONICAL	407.9	243.2	TO REMAIN	N/A
32	TERRAIN (HP)	120+09/736L	133.1	TRANSITIONAL	117.8	15.3	TO REMAIN	N/A
33	TERRAIN (HP)	138+17/7272R	1149.8	HORIZONTAL	209.2	940.6	TO REMAIN	N/A
34	TERRAIN (HP)	191+91/582R	181.0	APPROACH	150.2	30.8	TO REMAIN	N/A
35	ANTENNA	192+71/861R	227.0	TRANSITIONAL	152.6	74.4	LIGHTING	ULTIMATE
36	BUILDING	192+81/873R	191.8	TRANSITIONAL	154.4	37.4	LIGHTING	ULTIMATE
37	TANK	193+16/843R	204.5	APPROACH	153.9	50.6	LIGHTING	ULTIMATE
38	TERRAIN (HP)	278+24/5292R	1344.9	CONICAL	393.7	951.2	TO REMAIN	N/A
39	ANTENNA	187+76/1833R	375.5	HORIZONTAL	209.2	166.3	LIGHTING	ULTIMATE

- OBSTRUCTION NOTES:**
1. TERRAIN ALSO INCLUDES TREE AND BUSH PENETRATIONS
 2. (HP) = HIGH POINT OF TERRAIN OBSTRUCTION



BY	DATE	REVISION

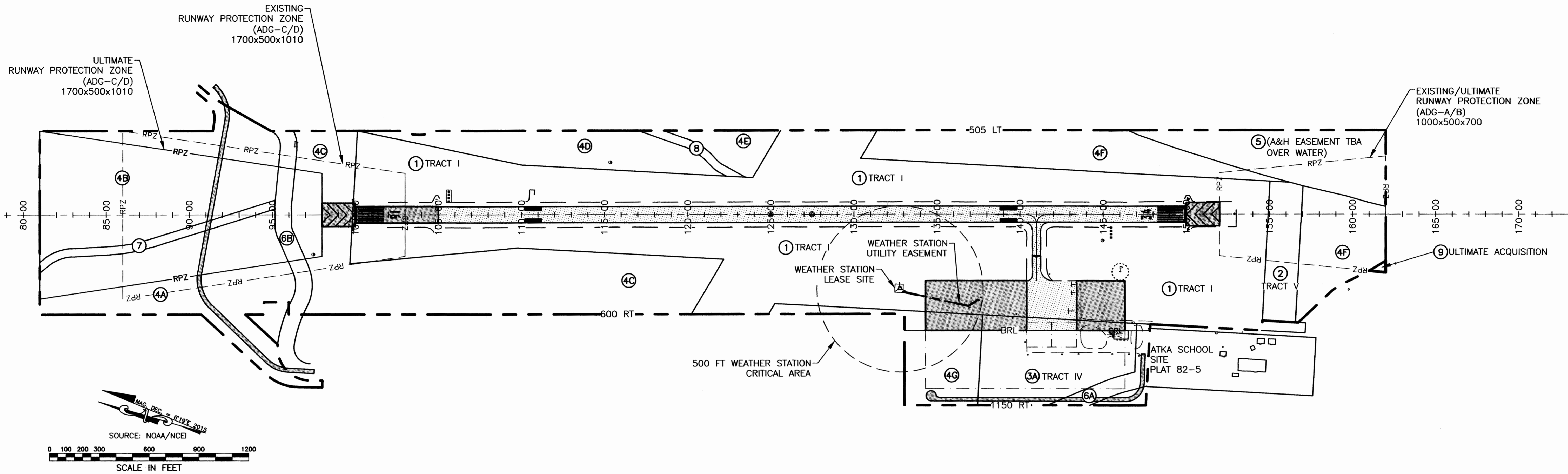
**STATE OF ALASKA
DEPARTMENT OF TRANSPORTATION
AND PUBLIC FACILITIES
CENTRAL REGION**

ATKA AIRPORT
ATKA, ALASKA
AIRPORT LAYOUT PLAN

ULTIMATE AIRPORT AIRSPACE
(FAR PART 77)

DATE: 09/03/2019
SHEET: 12 OF 14

Date Plotted: 9/03/2019, 11:21 AM
 Layout Name: ALP-13
 File Name: U:\20170228\Atka\Map\13-AIRPORT-PROPERTY.dwg
 Designed By: TRYKER
 Drawn By: RWAHLQUIST
 Checked By: JUMB



NOTES:

- TRACT 1 HAD BEEN LEASED BY AK DOT/PF FROM THE CITY OF ATKA. WHEN THE ACQUISITIONS FOR THE AIRPORT WERE COMPLETED IN 2007, THIS LEASE WAS TERMINATED AND THE REMAINDER OF FORMER TRACT 1 WAS RETAINED BY THE CITY OF ATKA.
- AN AVIGATION AND HAZARD EASEMENT REPORTEDLY EXISTS OVER TRACT V. THIS EASEMENT APPEARS TO HAVE NOT BEEN RECORDED.

PROPERTY STATUS								
PARCEL NUMBER	SIZE	GRANTOR	GRANTEE	EXISTING INTEREST	INTEREST	DATE ACQUIRED	BOOK PAGE	ACQUIRED UNDER A.I.P. NO.
1	99.058 AC.	CITY OF ATKA	STATE, DOT&PF	EXCEPTING THE SUBSURFACE ESTATE (LOT 82)	FEE	11/05/2007	2007-000536-0	3-02-0394-03-01
2	3.857 AC.-REC	CITY OF ATKA	STATE, DOT&PF	EXCEPTING THE SUBSURFACE ESTATE (LOT 82)	FEE	11/05/2007	2007-000536-0	3-02-0394-03-01
	3.840 AC.-FND							
3A	9.817 AC.	CITY OF ATKA	STATE, DOT&PF	EXCEPTING THE SUBSURFACE ESTATE (LOT 82)	FEE	11/05/2007	2007-000536-0	3-02-0394-03-01
3B	0.505 AC.	CITY OF ATKA	STATE, DOT&PF	EXCEPTING THE SUBSURFACE ESTATE (LOT 82)	FEE	11/05/2007	2007-000536-0	3-02-0394-03-01
TOTAL	10.322 AC.							
4A	17.216 AC.	ATXAMCORP	STATE, DOT&PF	EXCEPTING THE SUBSURFACE ESTATE	FEE	11/05/2007	2007-000537-0	3-02-0394-03-01
4B	21.005 AC.	ATXAMCORP	STATE, DOT&PF	EXCEPTING THE SUBSURFACE ESTATE	FEE	11/05/2007	2007-000537-0	3-02-0394-03-01
4C	25.983 AC.	ATXAMCORP	STATE, DOT&PF	EXCEPTING THE SUBSURFACE ESTATE	FEE	11/05/2007	2007-000537-0	3-02-0394-03-01
4D	7.667 AC.	ATXAMCORP	STATE, DOT&PF	EXCEPTING THE SUBSURFACE ESTATE	FEE	11/05/2007	2007-000537-0	3-02-0394-03-01
4E	2.249 AC.	ATXAMCORP	STATE, DOT&PF	EXCEPTING THE SUBSURFACE ESTATE	FEE	11/05/2007	2007-000537-0	3-02-0394-03-01
4F	16.924 AC.	ATXAMCORP	STATE, DOT&PF	EXCEPTING THE SUBSURFACE ESTATE	FEE	11/05/2007	2007-000537-0	3-02-0394-03-01
4G	6.596 AC.	ATXAMCORP	STATE, DOT&PF	EXCEPTING THE SUBSURFACE ESTATE	FEE	11/05/2007	2007-000537-0	3-02-0394-03-01
TOTAL	97.640 AC.							
5	8.830 AC.-REC	DNR	STATE, DOT&PF	ADL 230894 (AVIGATION AND HAZARD EASEMENT TBA)	I.L.M.A.	TBA		3-02-0394-03-01
	8.847 AC.-FND							
6A	1.664 AC.	CITY OF ATKA	STATE, DOT&PF	EXCEPTING THE SUBSURFACE ESTATE (LOT 82)	FEE	11/05/2007	2007-000538-0	3-02-0394-03-01
6B	2.628 AC.	CITY OF ATKA	STATE, DOT&PF	EXCEPTING THE SUBSURFACE ESTATE	FEE	11/05/2007	2007-000538-0	3-02-0394-03-01
TOTAL	4.292 AC.							
7	1.699 AC.	CITY OF ATKA	STATE, DOT&PF	EXCEPTING THE SUBSURFACE ESTATE (LOT 59)	FEE	11/05/2007	2007-000538-0	3-02-0394-03-01
8	0.678 AC.	CITY OF ATKA	STATE, DOT&PF	EXCEPTING THE SUBSURFACE ESTATE (LOT 72)	FEE	11/05/2007	2007-000538-0	3-02-0394-03-01
9	0.080 AC.	CITY OF ATKA	STATE, DOT&PF		FEE	TBD	TBD	TBD

ALL PARCELS SUBSURFACE ESTATE - USFWS
 ATKA IS WITHIN THE ALEUTIAN ISLANDS RECORDING DISTRICT

STATE OF ALASKA DEPARTMENT OF TRANSPORTATION AND PUBLIC FACILITIES CENTRAL REGION		ATKA AIRPORT ATKA, ALASKA AIRPORT LAYOUT PLAN AIRPORT PROPERTY MAP	DATE: 09/03/2019
			SHEET: 13 OF 14
BY	DATE	REVISION	

